

MALBEC 2

16265 51st Street NW, Edmonton, AB

General Information:

One parking space included
6 month and 1 year lease terms available

Suite Details:

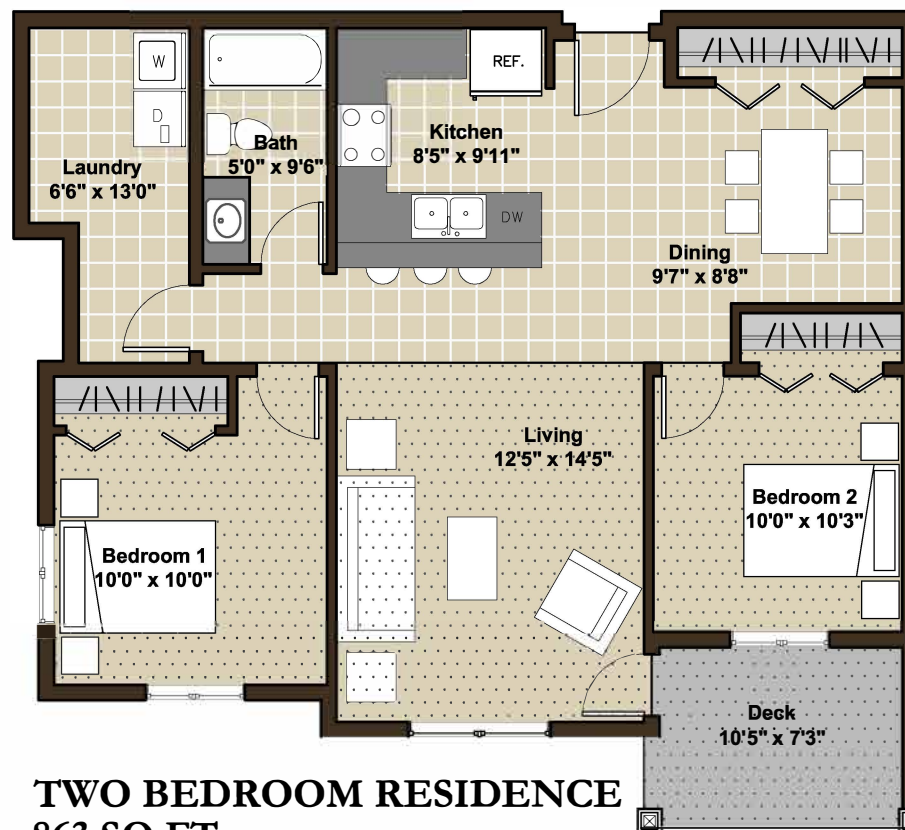
Condo style suites
Washer/Dryer in suite
Heat & water included in rent
5 appliances
Private, large deck or patio for every suite
Powered parking
Window coverings included

Building Details:

Designed to be the premier rental building in Edmonton
Upgraded wall and ceiling soundproofing
Hardiplank exterior & extensive landscaping
Elevator & secure building access
Modern finishings

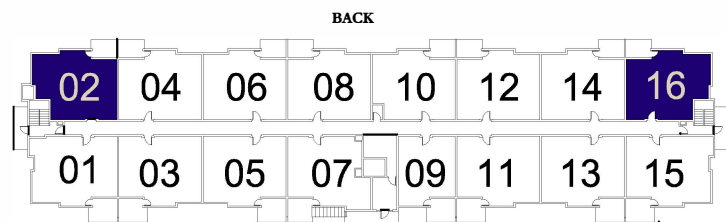
BRINTNELL

LANDING APARTMENTS

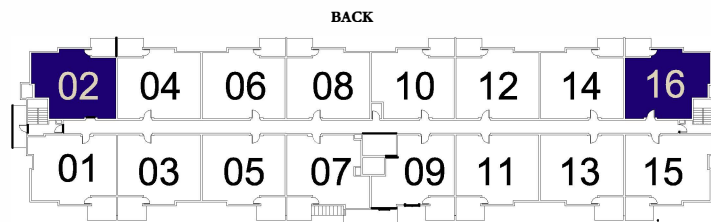


TWO BEDROOM RESIDENCE
863 SQ.FT

The square footage and room sizes are approximate.



Building 2
Main Floor



Building 2
2nd, 3rd, 4th Floors