



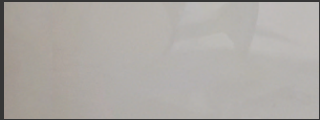
# LANCASTER PARK APARTMENTS

160 Lancaster Drive, Welland, ON

## FOXGLOVE

966-976 sq ft

The floor plan illustrated here uses finishes from our exclusive **Palette One** collection, and include:



**CABINETS:**  
HIGH GLOSS  
GREY



**COUNTERS:**  
QUARTZ



**FLOORING:**  
LUXURY  
VINYL PLANK

Palette One finishes are in suites on floors 2, 4, 6 & 8.



All suite measurements are preliminary based on current building concept and unit configurations and are subject to change.  
[www.lancasterparkapartments.ca](http://www.lancasterparkapartments.ca)



# LANCASTER PARK APARTMENTS

160 Lancaster Drive, Welland, ON

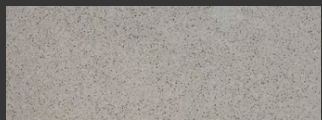
## FOXGLOVE

966-976 sq ft

This suite is also available with finishes from our **Palette Two** collection, and include:



**CABINETRY:**  
HIGH GLOSS  
WHITE



**COUNTERS:**  
QUARTZ



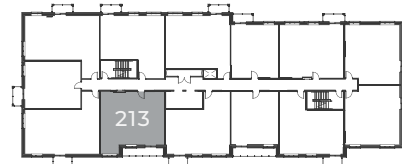
**FLOORING:**  
LUXURY  
VINYL PLANK

Palette Two finishes are in suites  
on floors 1, 3, 5, 7 & 9.

First floor | Suite 113\*



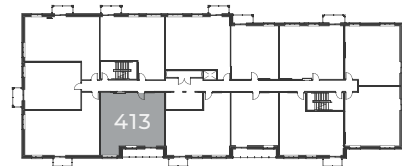
Second floor | Suite 213\*



Third floor | Suite 313\*



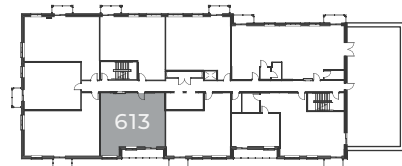
Fourth floor | Suite 413



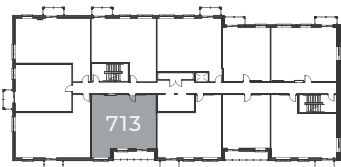
Fifth floor | Suite 513



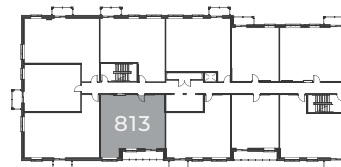
Sixth floor | Suite 613\*



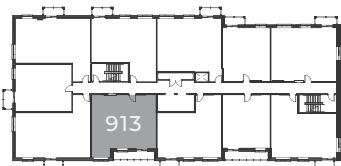
Seventh floor | Suite 713\*



Eighth floor | Suite 813\*



Ninth floor | Suite 913\*



\*Accessible unit.  
[www.lancasterparkapartments.ca](http://www.lancasterparkapartments.ca)