

REISLING 2

16255 51st Street NW, Edmonton, AB

General Information:

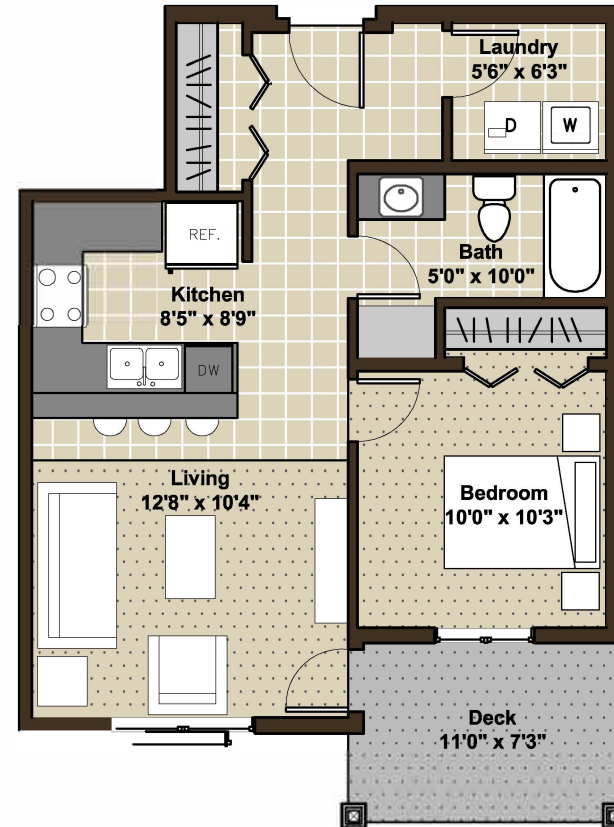
One parking space included
6 month and 1 year lease terms available

Suite Details:

Condo style suites
Washer/Dryer in suite
Heat & water included in rent
5 appliances
Private, large deck or patio for every suite
Powered parking
Window coverings included

Building Details:

Designed to be the premier rental building in Edmonton
Upgraded wall and ceiling soundproofing
Hardiplank exterior & extensive landscaping
Elevator & secure building access
Modern finishings

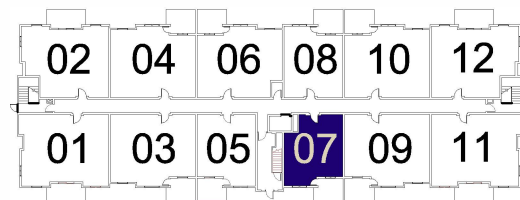


ONE BEDROOM RESIDENCE 555 SQ.FT

The square footage and room sizes are approximate.

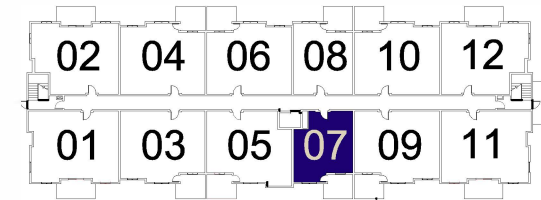
BACK

BACK



**Building 3
Main Floor**

FRONT



**Building 3
2nd, 3rd, 4th Floors**

FRONT

BRINTNELL
LANDING APARTMENTS