

REISLING 1

16265 51st Street NW, Edmonton, AB
 16255 51st Street NW, Edmonton, AB

General Information:

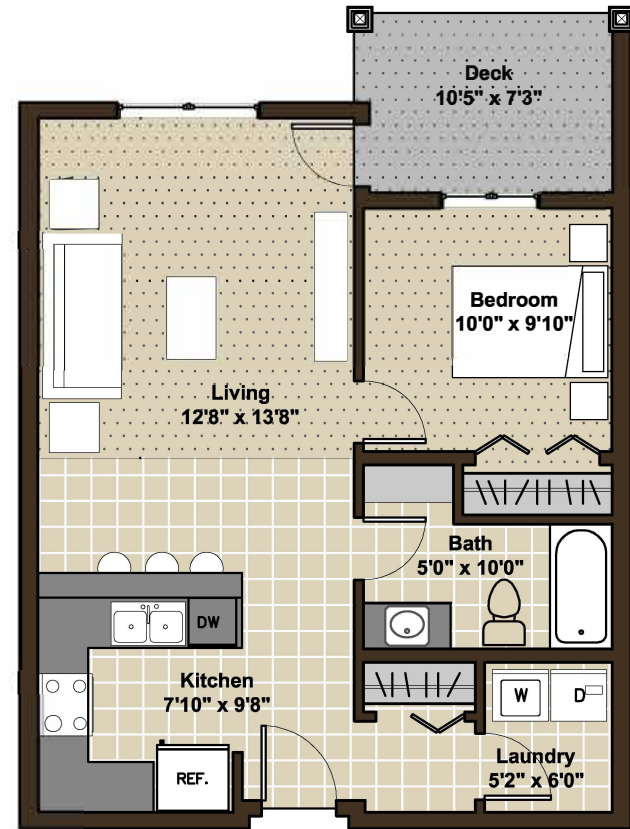
One parking space included
 6 month and 1 year lease terms available

Suite Details:

Condo style suites
 Washer/Dryer in suite
 Heat & water included in rent
 5 appliances
 Private, large deck or patio for every suite
 Powered parking
 Window coverings included

Building Details:

Designed to be the premier rental building in Edmonton
 Upgraded wall and ceiling soundproofing
 Hardiplank exterior & extensive landscaping
 Elevator & secure building access
 Modern finishings



ONE BEDROOM RESIDENCE
604 SQ.FT The square footage and room sizes are approximate.

BRINTNELL

LANDING APARTMENTS

