



MEREWOOD APARTMENTS

377 & 385 Moilliet Street South
Parksville, BC

CYPRESS

795-856 sq ft

The floor plan illustrated here includes these finishes:



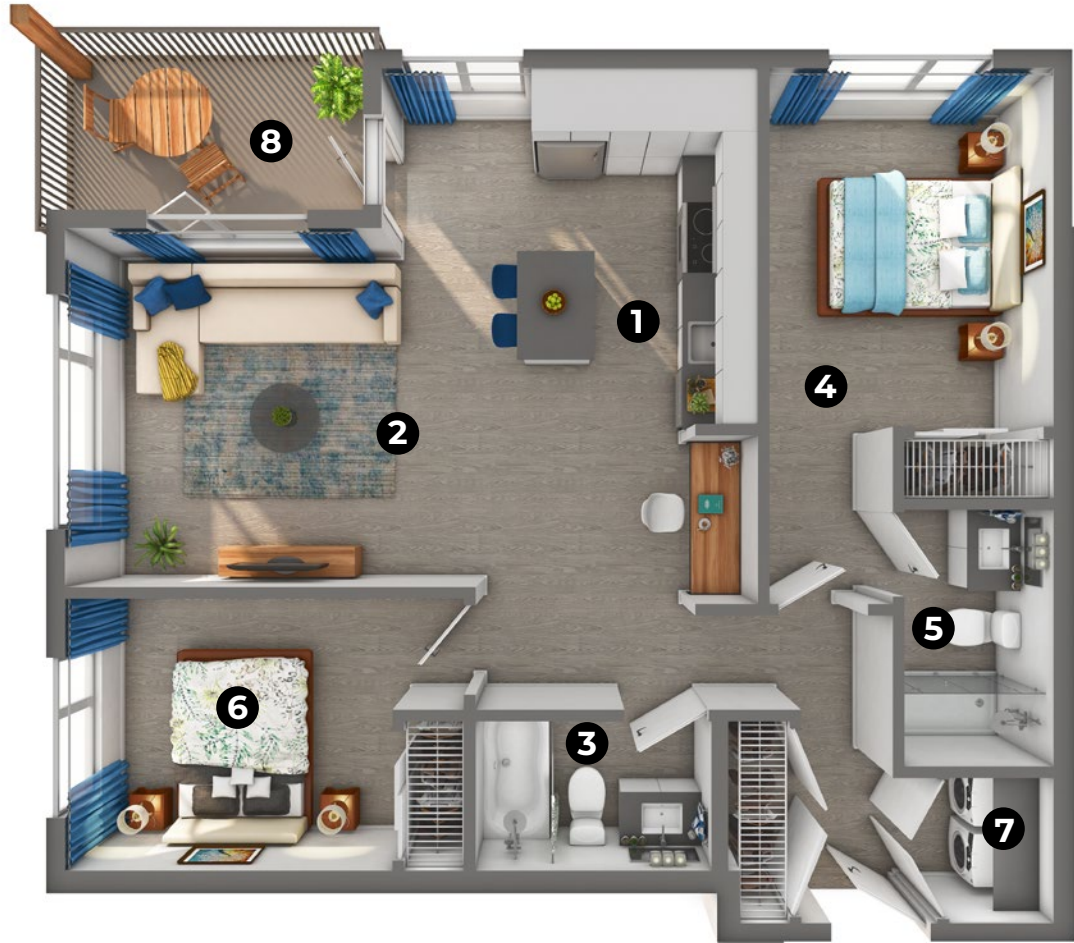
CABINETY:
FLAT SLAB



COUNTERS:
QUARTZ



FLOORING:
LUXURY
VINYL TILE



- | | | | | |
|---|--------------------------------------|------------------------------|------------------------------------|--------------------------------|
| 1 Kitchen/Dining
17' x 12' 8" | 2 Living Room
12' x 10' 8" | 3 Bathroom
5' x 8' | 4 Bedroom
12' 1" x 9' 6" | 5 Ensuite
8' 7" x 5' |
| 6 Bedroom
9' 2" x 11' | 7 Laundry
5' x 3' 6" | 8 Balcony
7' x 12' | | |

Please note, all floor plans and photos are provided for illustrative purposes only. ALL MEASUREMENTS ARE APPROXIMATE. Actual layouts may be different than shown and could vary in size and scale. merewoodapartments.ca



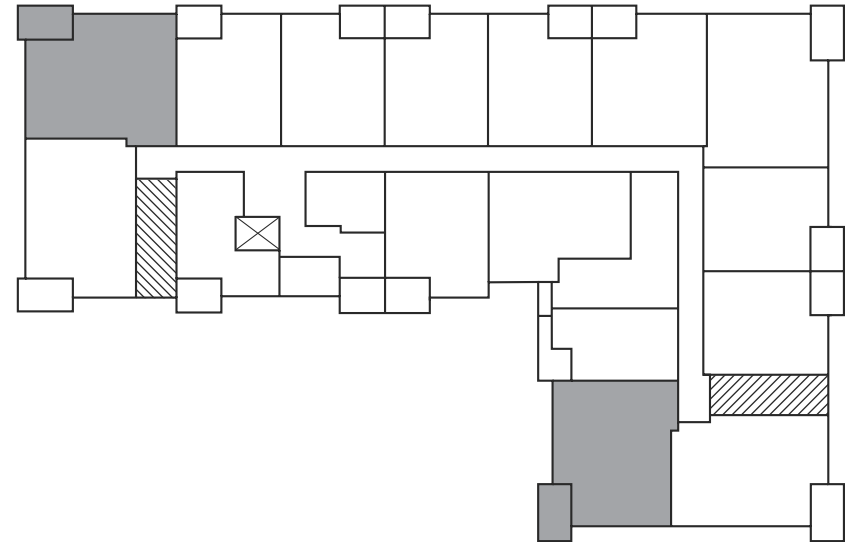
MEREWOOD APARTMENTS

377 & 385 Moilliet Street South
Parksville, BC

CYPRESS
795-856 sq ft

377 Moilliet Street South

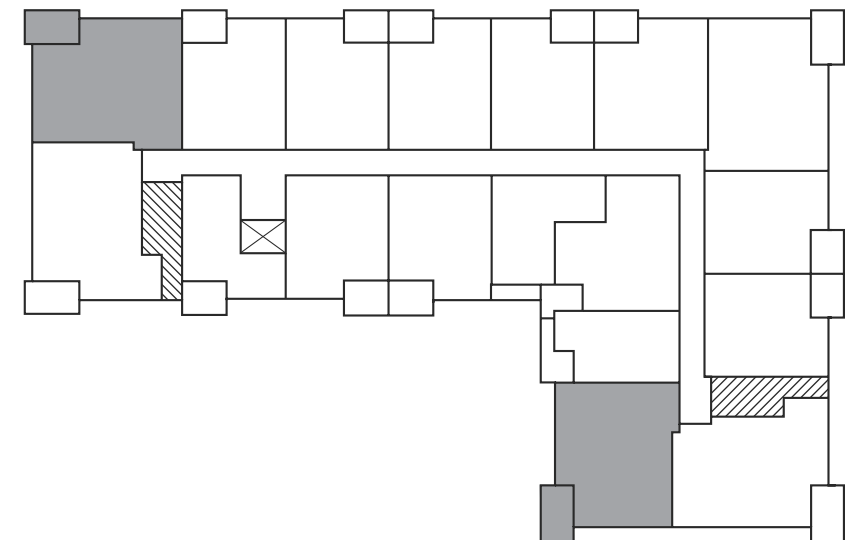
First Floor



⊗ Elevator ⊗ Stairwell

377 Moilliet Street South

Second Floor –
Fourth Floor



⊗ Elevator ⊗ Stairwell



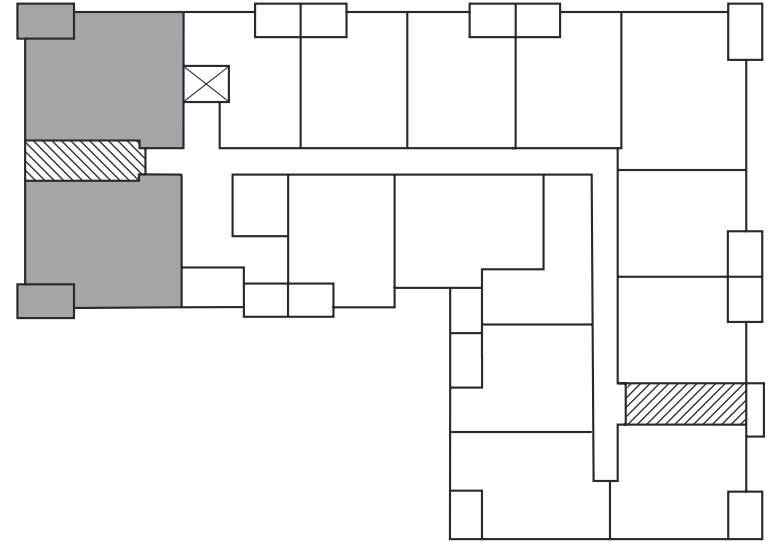
MEREWOOD APARTMENTS

377 & 385 Moilliet Street South
Parksville, BC

CYPRESS
795-856 sq ft

385 Moilliet Street South

First Floor



 Elevator  Stairwell
