



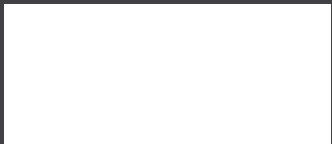
MEREWOOD APARTMENTS

377 & 385 Moilliet Street South
Parksville, BC

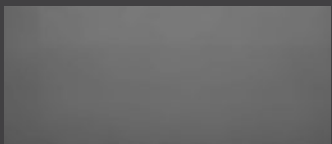
PLUM

664-718 sq ft

The floor plan illustrated here includes these finishes:



CABINETS:
FLAT SLAB



COUNTERS:
QUARTZ



FLOORING:
LUXURY
VINYL TILE



- 1** Kitchen/Dining 14' 8" x 18' 5"
- 2** Living Room 14' x 11'
- 3** Den 11' 5" x 9' 7"
- 4** Bathroom 5' x 10'
- 5** Bedroom 11' 5" x 14' 8"
- 6** Laundry 3' x 5'
- 7** Balcony 8' 8" x 9' 9"

Please note, all floor plans and photos are provided for illustrative purposes only. ALL MEASUREMENTS ARE APPROXIMATE. Actual layouts may be different than shown and could vary in size and scale. merewoodapartments.ca



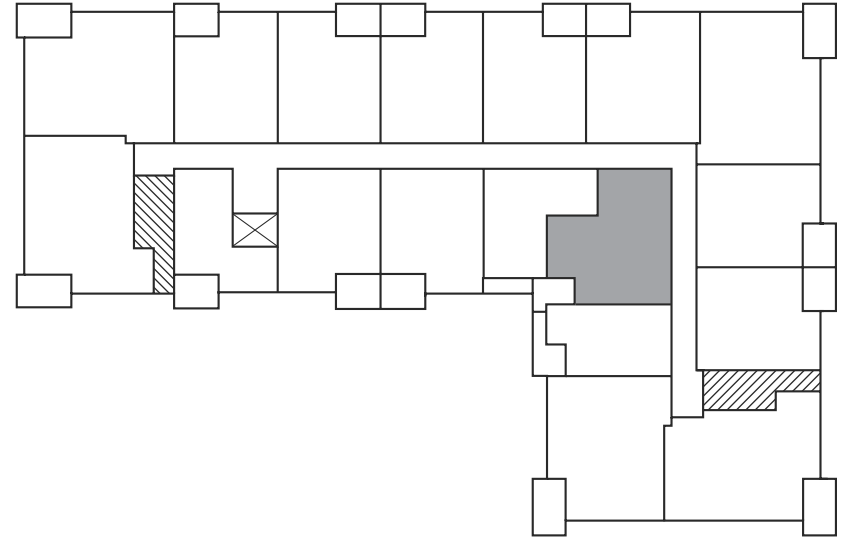
MEREWOOD APARTMENTS

377 & 385 Moilliet Street South
Parksville, BC

PLUM
664-718 sq ft

377 Moilliet Street South

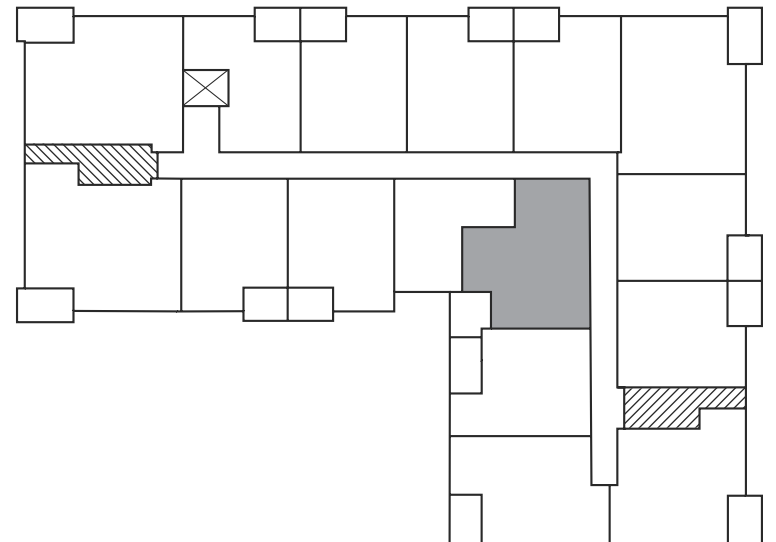
Second Floor –
Fourth Floor



☒ Elevator ☒ Stairwell

385 Moilliet Street South

Second Floor –
Fourth Floor



☒ Elevator ☒ Stairwell