



# MEREWOOD APARTMENTS

377 & 385 Moilliet Street South  
Parksville, BC

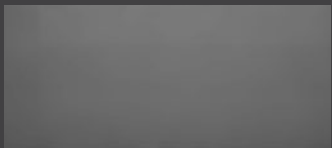
## REDWOOD

850 sq ft

The floor plan illustrated here includes these finishes:



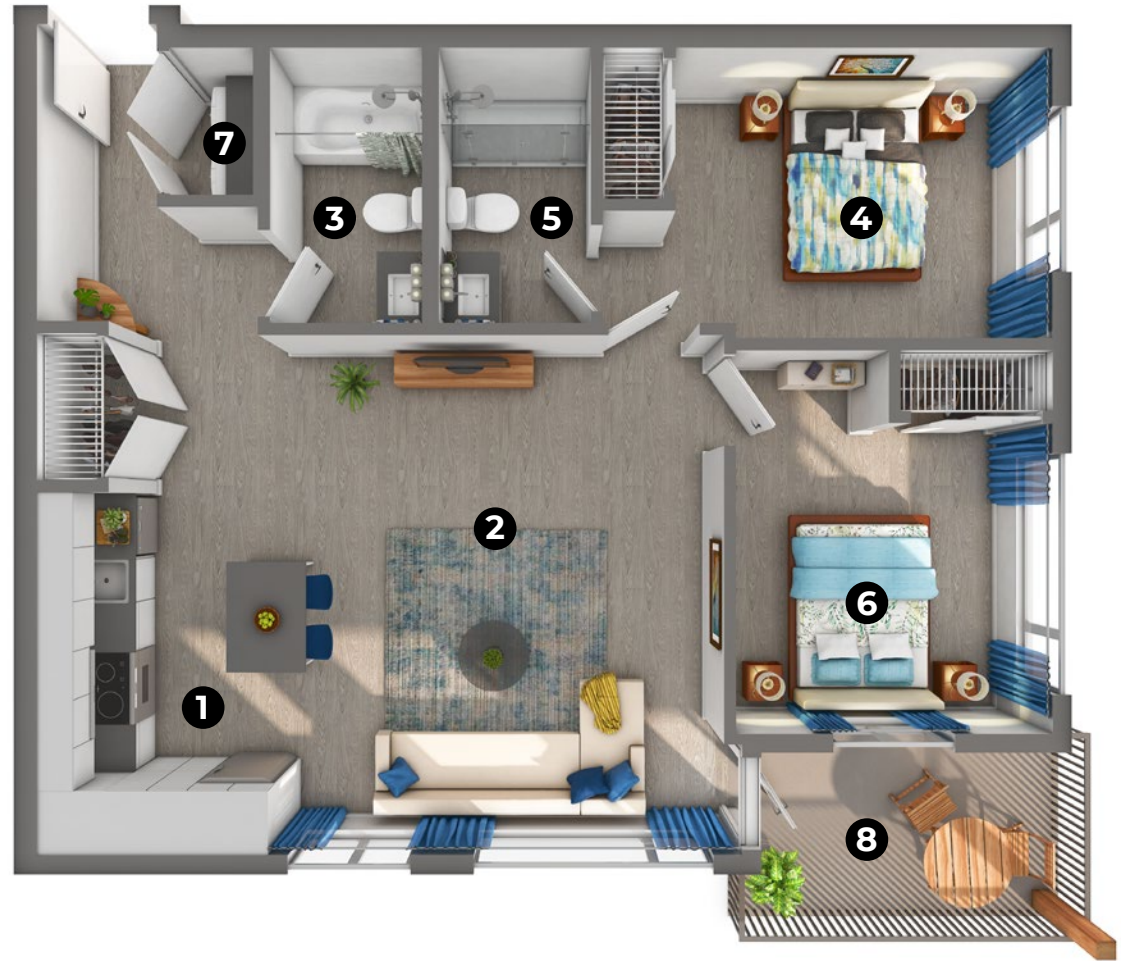
CABINETY:  
FLAT SLAB



COUNTERS:  
QUARTZ



FLOORING:  
LUXURY  
VINYL TILE



- |                                     |                                   |                                  |                                    |                             |
|-------------------------------------|-----------------------------------|----------------------------------|------------------------------------|-----------------------------|
| <b>1</b> Kitchen/Dining<br>9' x 17' | <b>2</b> Living Room<br>14' x 17' | <b>3</b> Bathroom<br>9' x 5'     | <b>4</b> Bedroom<br>14' 8" x 9' 6" | <b>5</b> Ensuite<br>9' x 5' |
| <b>6</b> Bedroom<br>10' 10" x 13'   | <b>7</b> Laundry<br>3' x 4' 10"   | <b>8</b> Balcony<br>11' 10" x 7' |                                    |                             |

Please note, all floor plans and photos are provided for illustrative purposes only. ALL MEASUREMENTS ARE APPROXIMATE. Actual layouts may be different than shown and could vary in size and scale. [merewoodapartments.ca](http://merewoodapartments.ca)



# MEREWOOD APARTMENTS

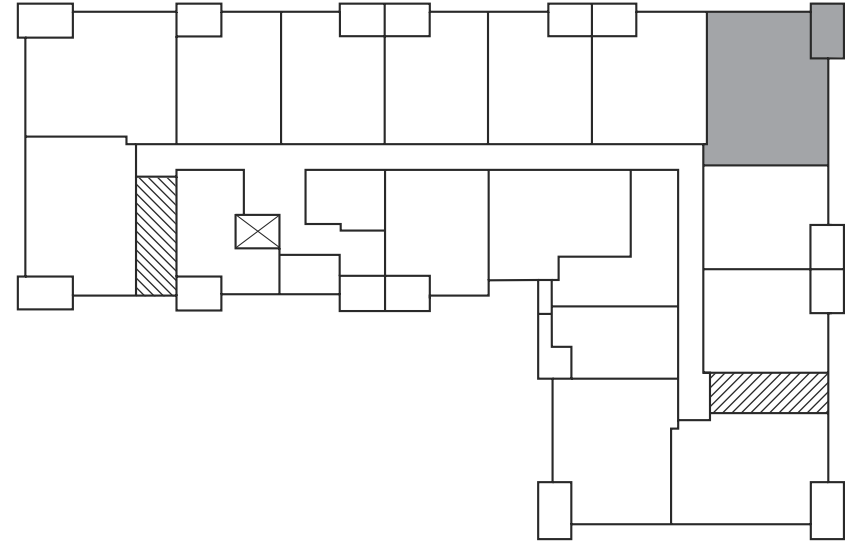
377 & 385 Moilliet Street South  
Parksville, BC

## REDWOOD

850 sq ft

### 377 Moilliet Street South

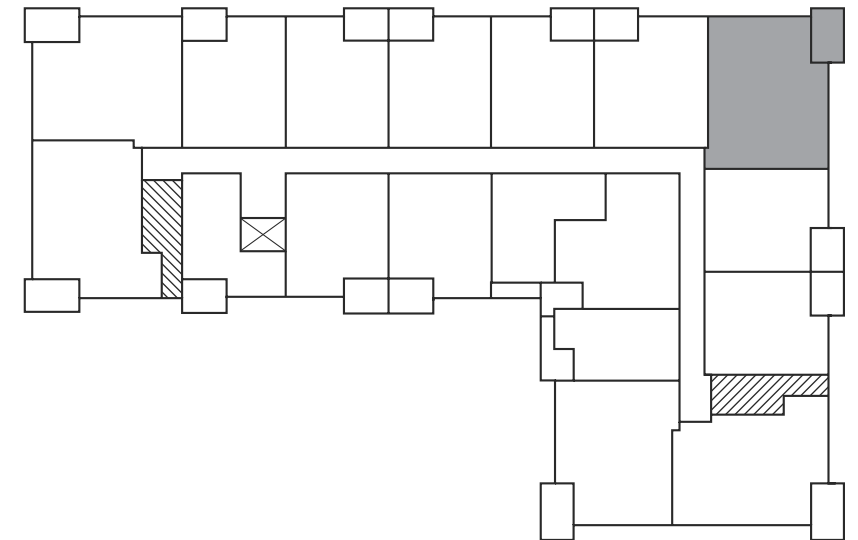
First Floor



⊗ Elevator   ⊗ Stairwell

### 377 Moilliet Street South

Second Floor –  
Fourth Floor



⊗ Elevator   ⊗ Stairwell



# MEREWOOD APARTMENTS

377 & 385 Moilliet Street South  
Parksville, BC

## REDWOOD

**850** sq ft

### 385 Moilliet Street South

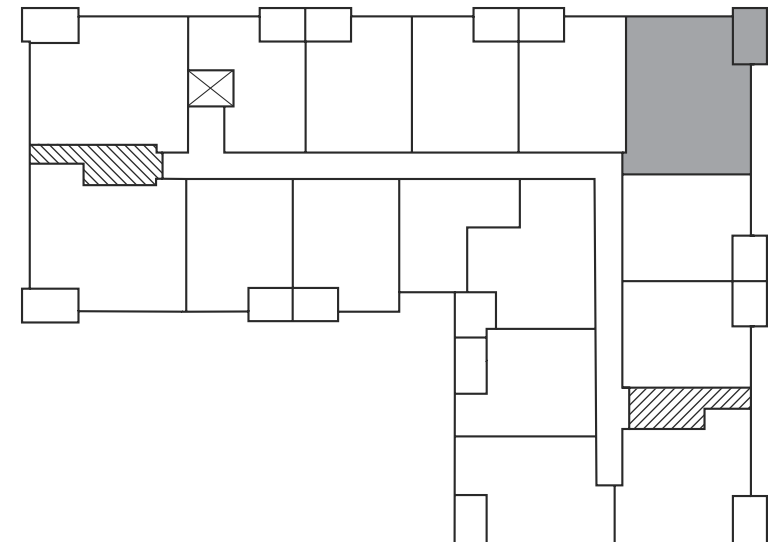
First Floor



⊠ Elevator   ⊠ Stairwell

### 385 Moilliet Street South

Second Floor –  
Fourth Floor



⊠ Elevator   ⊠ Stairwell