



MONARCH APARTMENTS

3554-A Ryder Hesjedal Way
Colwood, BC

MARINE

880 sq ft

The floor plan illustrated here includes these finishes:



CABINETS:
FLAT SLAB



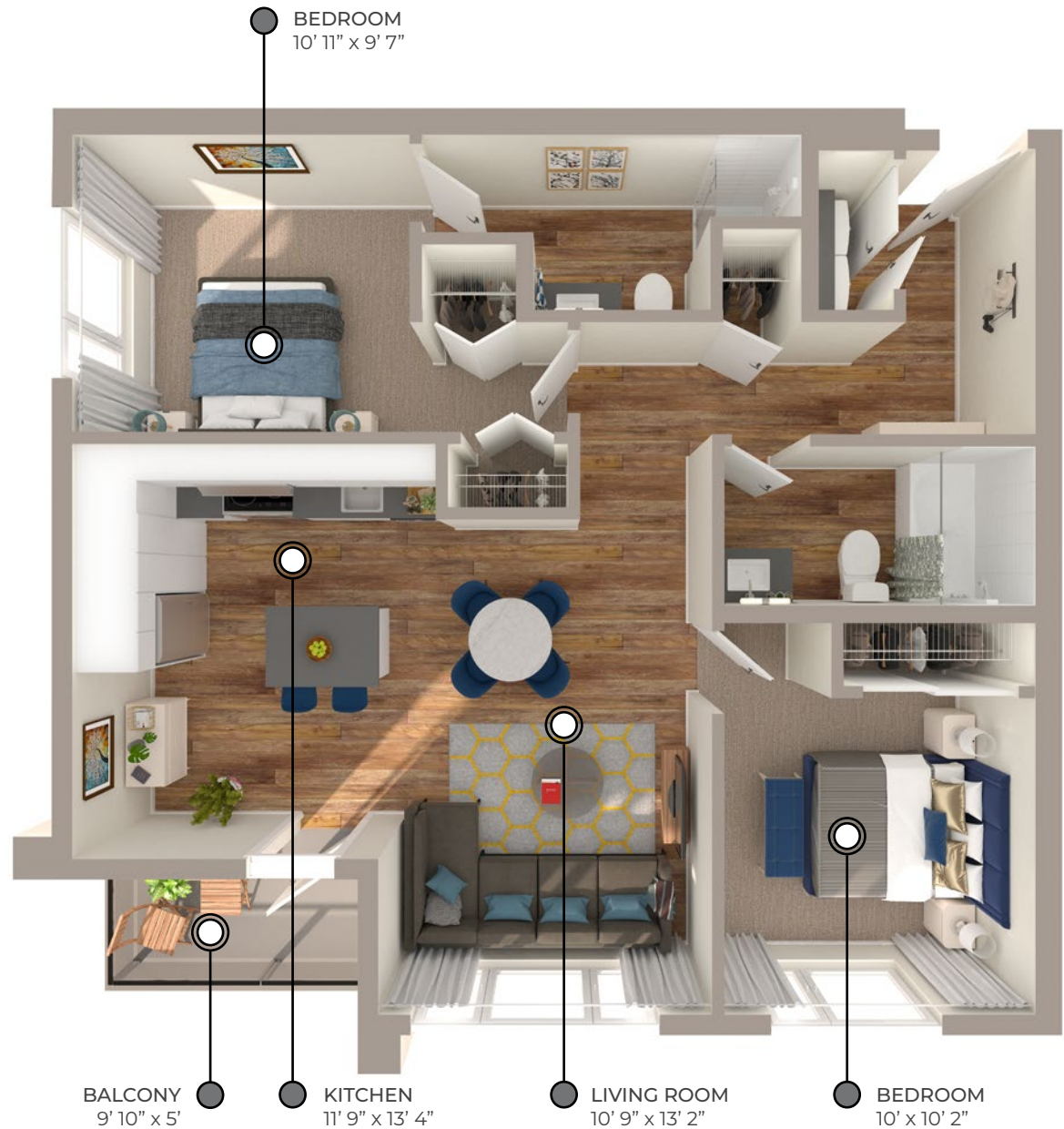
COUNTERS:
QUARTZ



FLOORING:
LUXURY
VINYL PLANK



CARPET:
TEXTURED
CUT PILE



All suite measurements are preliminary based on current building concept and unit configurations and are subject to change.



MONARCH APARTMENTS

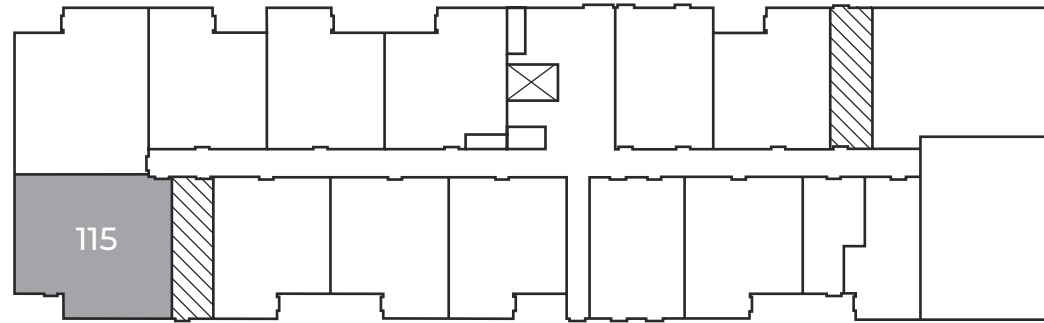
3554-A Ryder Hesjedal Way
Colwood, BC

MARINE

880 sq ft

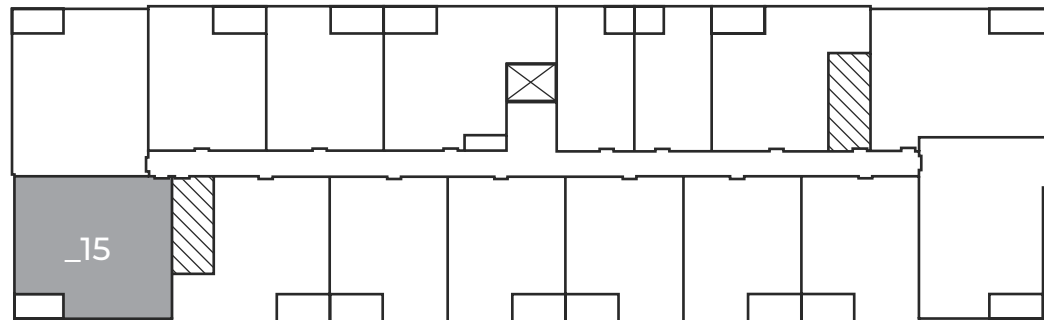
First Floor

Suite: 115



Second Floor – Fifth Floor

Suites: 215, 315, 415, 515



 Elevator  Stairwell