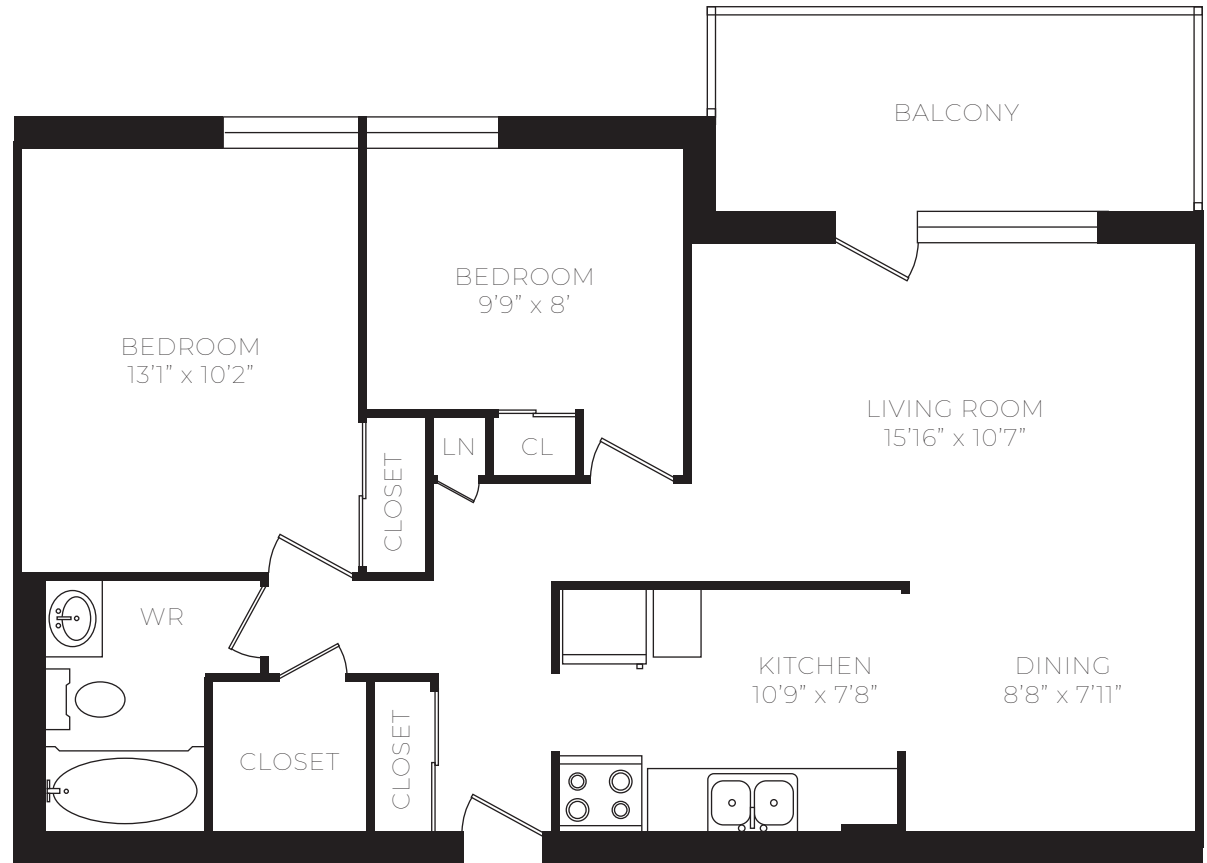


2 BEDROOM

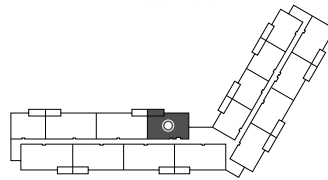
795 sq ft

24 Helen Avenue
Brantford, ON

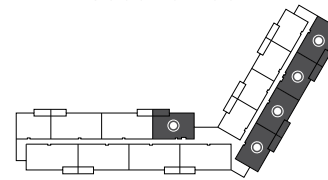
Suite 101, 201, 209,
210, 211, 212, 301,
309, 310, 311, 312,
401, 409, 410, 411,
412, 501, 509, 510,
511, 512, 601, 609,
610, 611, 612



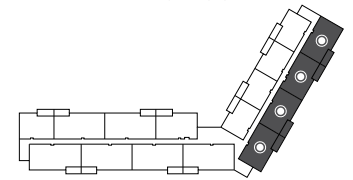
First floor



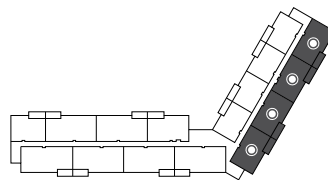
Second floor



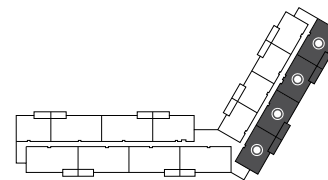
Third floor



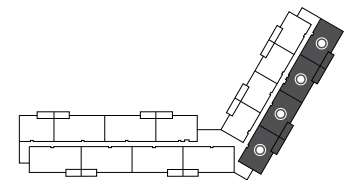
Fourth floor



Fifth floor



Sixth floor



**GRAHAM
BELL**
APARTMENTS

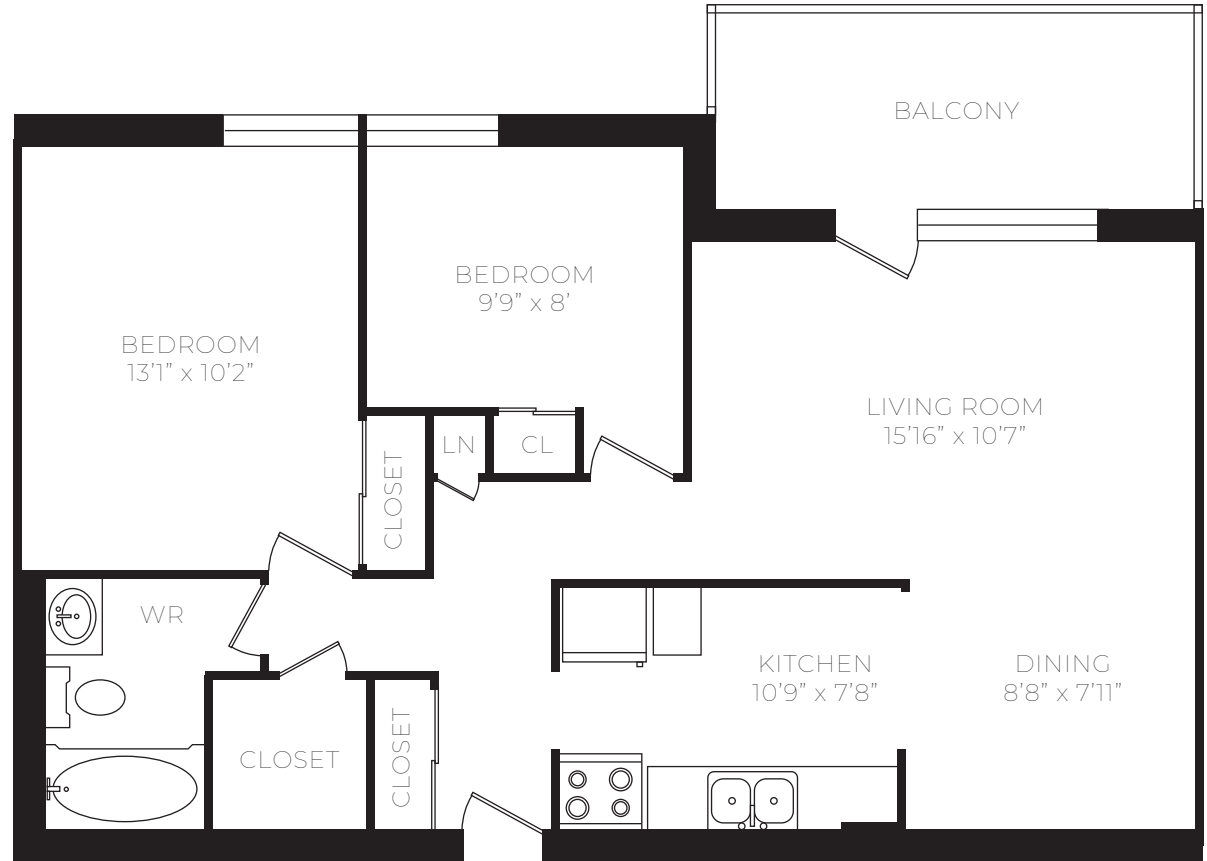
All suite measurements are preliminary based on current building concept and unit configurations and are subject to change.

2 BEDROOM

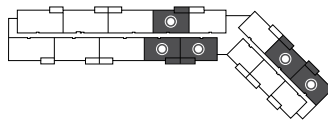
795 sq ft

26 Helen Avenue
Brantford, ON

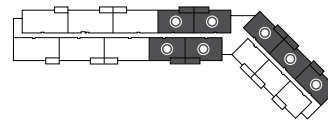
Suite 102, 103, 107,
108, 116, 201, 202,
203, 207, 208, 216,
217, 301, 302, 303,
307, 308, 316, 317,
401, 402, 403, 407,
408, 416, 417, 501,
502, 503, 507, 508,
516, 517, 601, 602,
603, 607, 608,
616, 617



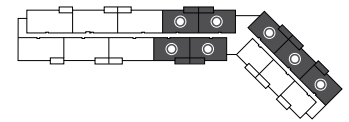
First floor



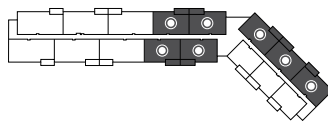
Second floor



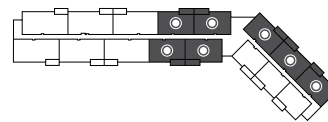
Third floor



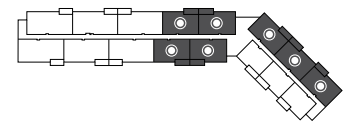
Fourth floor



Fifth floor



Sixth floor



**GRAHAM
BELL**
APARTMENTS

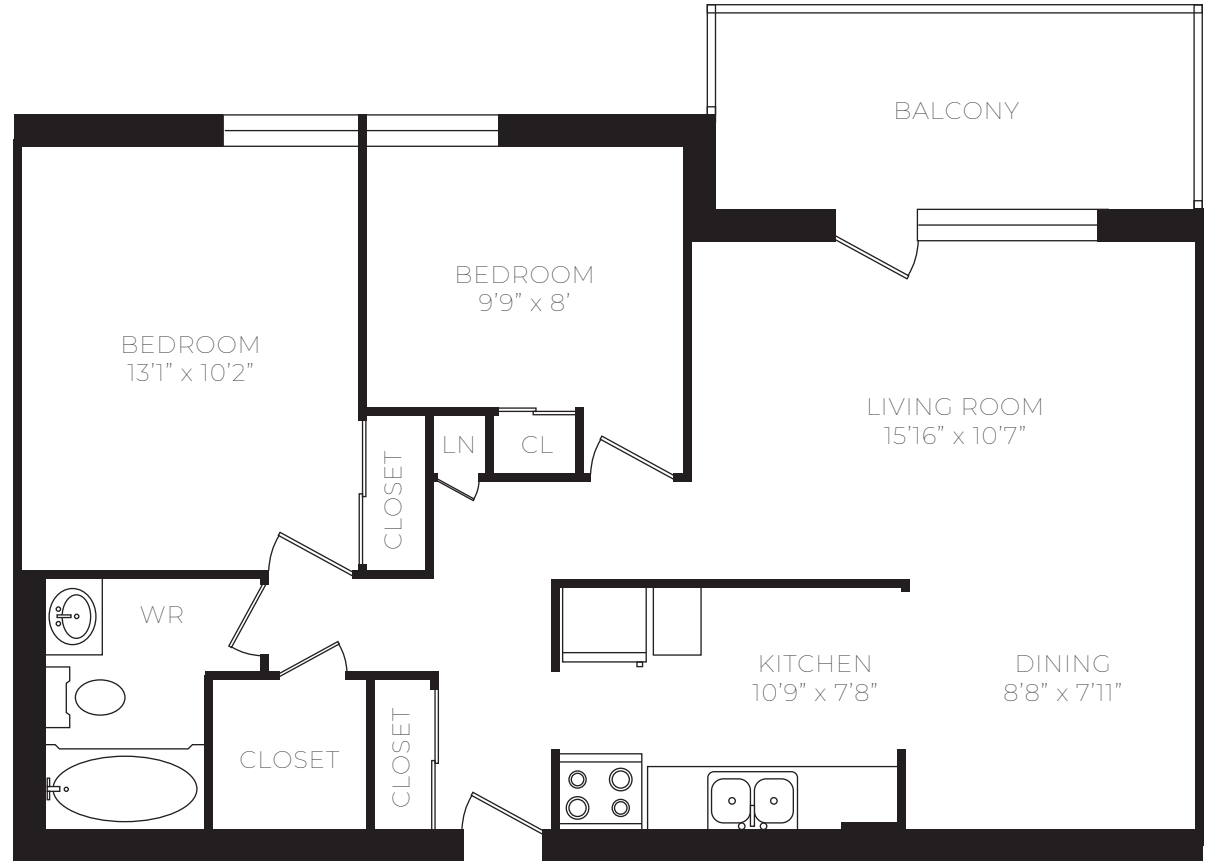
All suite measurements are preliminary based on current building concept and unit configurations and are subject to change.

2 BEDROOM

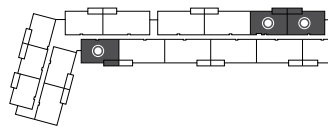
795 sq ft

28 Helen Avenue
Brantford, ON

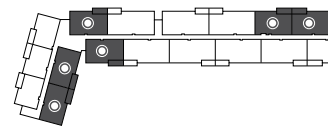
Suite 105, 106, 112,
115, 201, 205, 206,
212, 214, 215, 301,
305, 306, 312, 314,
315, 401, 405, 406,
412, 414, 415, 501,
505, 506, 512, 514,
515, 601, 605, 606,
612, 614, 615



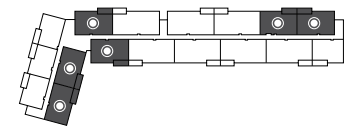
First floor



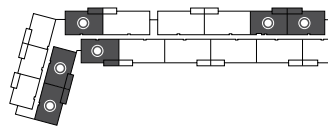
Second floor



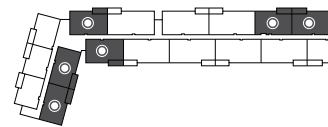
Third floor



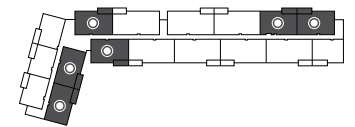
Fourth floor



Fifth floor



Sixth floor



SKYLINE
LIVING
GRAHAM
BELL
APARTMENTS

All suite measurements are preliminary based on current building concept and unit configurations and are subject to change.