



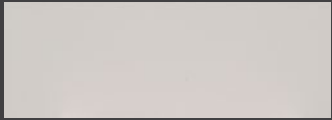
# RIVER'S EDGE APARTMENTS

53 & 57 Riverview Drive  
Chatham, ON

## DRESDEN

904 sq ft

The floor plan illustrated here uses finishes from our exclusive **Palette One** collection, and include:



**CABINETRY:**  
FLAT PANEL



**COUNTERS:**  
QUARTZ



**FLOORING:**  
LUXURY  
VINYL PLANK

Palette One finishes are on  
levels 1 & 3.



All suite measurements are preliminary based on current building concept and unit configurations and are subject to change.  
[riversedgeapartments.ca](http://riversedgeapartments.ca)



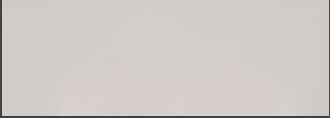
# RIVER'S EDGE APARTMENTS

53 & 57 Riverview Drive  
Chatham, ON

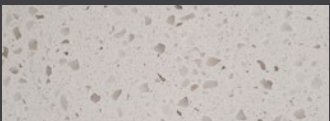
## TILBURY

927 sq ft

The floor plan illustrated here  
uses finishes from our exclusive  
**Palette One** collection, and  
include:



CABINETRY:  
FLAT PANEL



COUNTERS:  
QUARTZ



FLOORING:  
LUXURY  
VINYL PLANK

Palette One finishes are on  
levels 1 & 3.



All suite measurements are preliminary based on current building  
concept and unit configurations and are subject to change.  
[riversedgeapartments.ca](http://riversedgeapartments.ca)

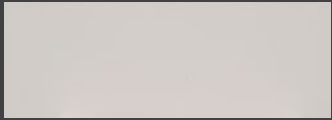


RIVER'S  
EDGE  
APARTMENTS

53 & 57 Riverview Drive  
Chatham, ON

BOTHWELL  
1003-1010 sq ft

The floor plan illustrated here uses finishes from our exclusive **Palette One** collection, and include:



CABINETS:  
FLAT PANEL

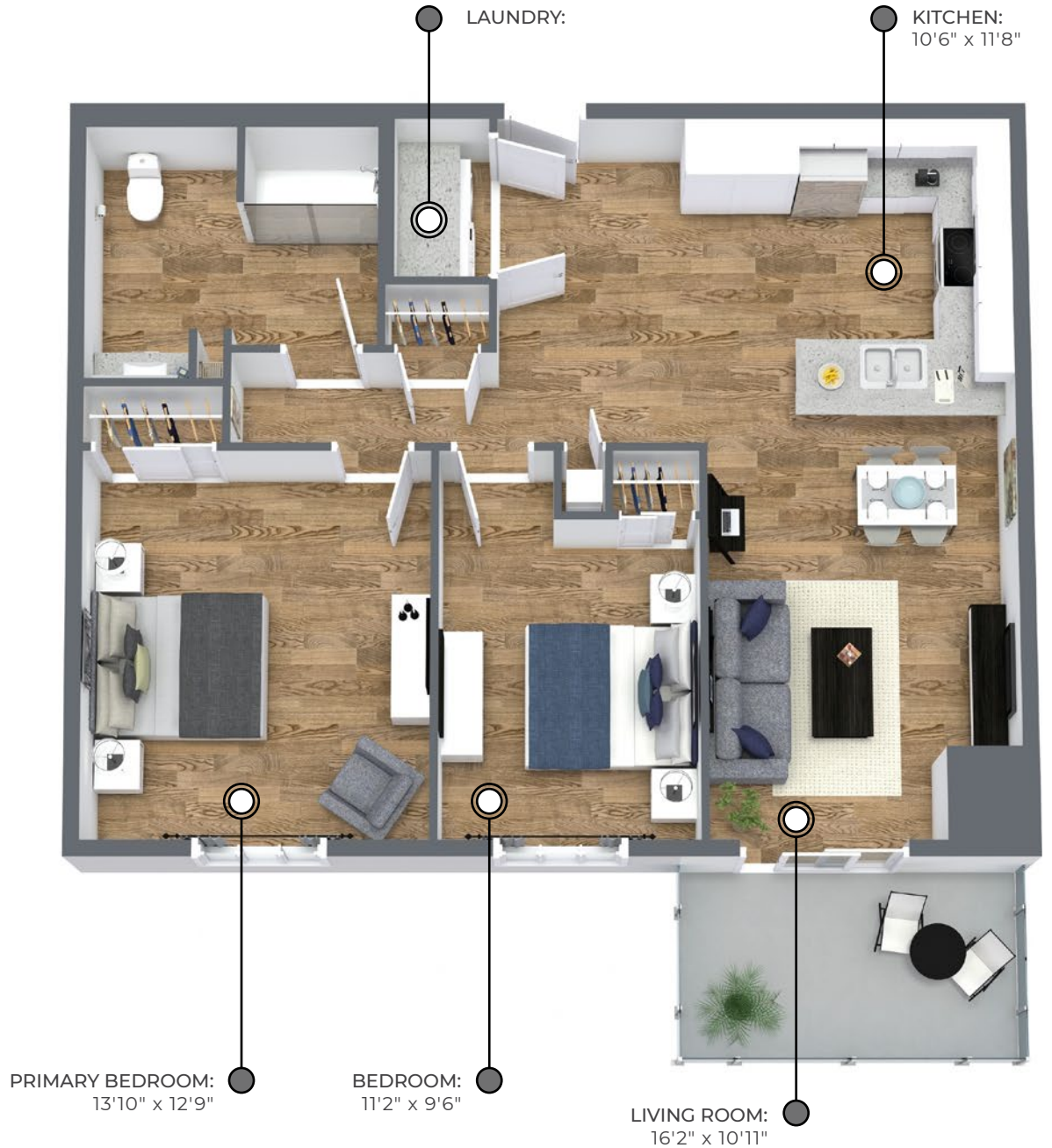


COUNTERS:  
QUARTZ



FLOORING:  
LUXURY  
VINYL PLANK

Palette One finishes are on  
levels 1 & 3.



All suite measurements are preliminary based on current building concept and unit configurations and are subject to change.  
[riversedgeapartments.ca](http://riversedgeapartments.ca)



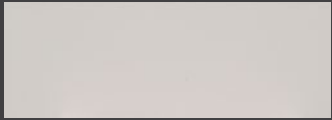
# RIVER'S EDGE APARTMENTS

53 & 57 Riverview Drive  
Chatham, ON

## HIGHGATE

**1011** sq ft

The floor plan illustrated here uses finishes from our exclusive **Palette One** collection, and include:



**CABINETS:**  
FLAT PANEL



**COUNTERS:**  
QUARTZ



**FLOORING:**  
LUXURY  
VINYL PLANK

Palette One finishes are on  
levels 1 & 3.



All suite measurements are preliminary based on current building concept and unit configurations and are subject to change.  
[riversedgeapartments.ca](http://riversedgeapartments.ca)