



BROOKSIDE TERRACE APARTMENTS

118 & 120 Tilbury Avenue,
Bedford, NS

HARBOUR WALK 1505-1538 sq ft

The floor plan illustrated here includes these finishes:

CABINETS:



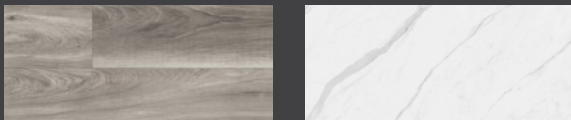
White High-gloss White Charcoal

COUNTERS:

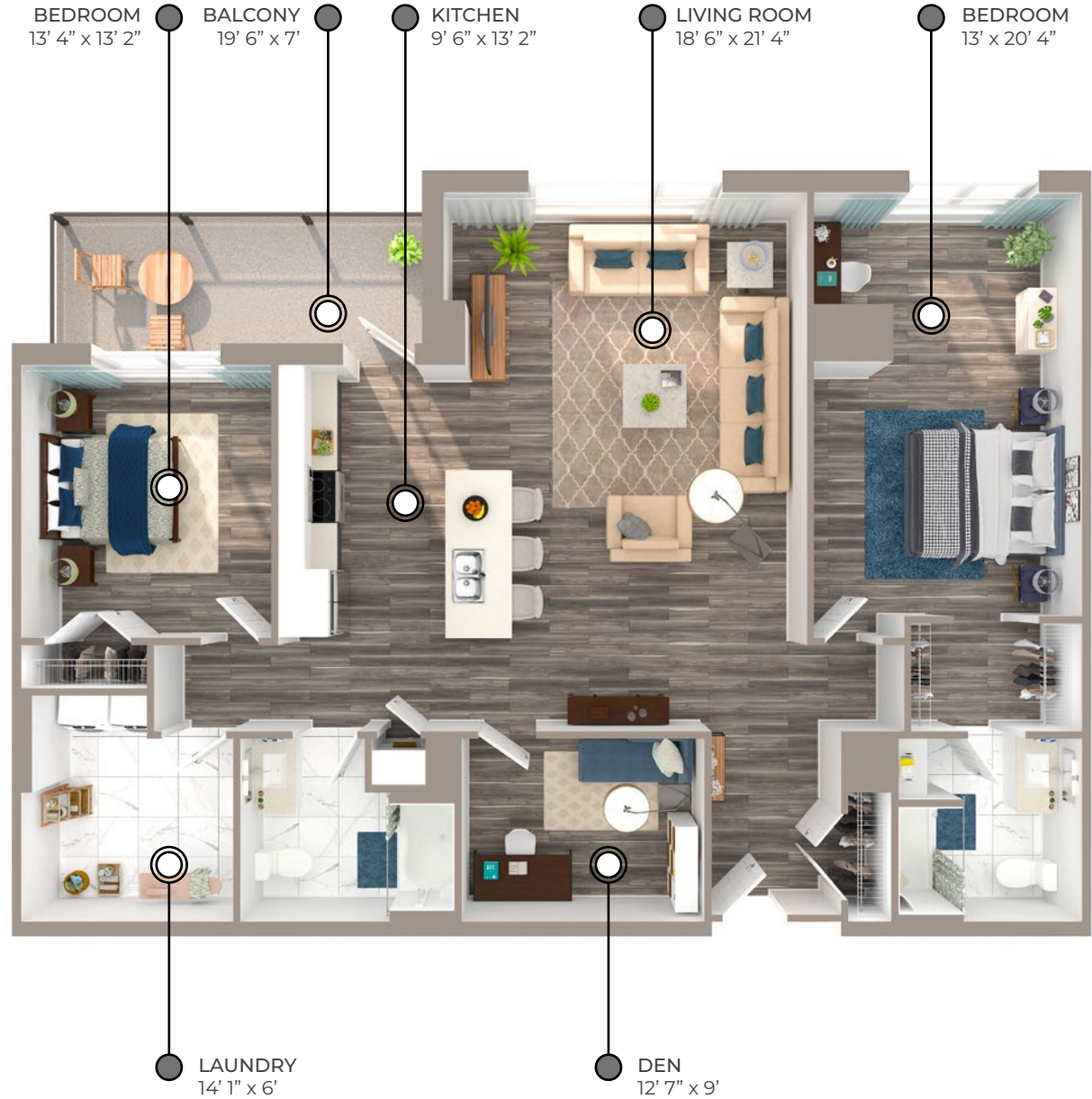


Laminate Quartz

FLOORING:



Luxury vinyl plank Ceramic tile



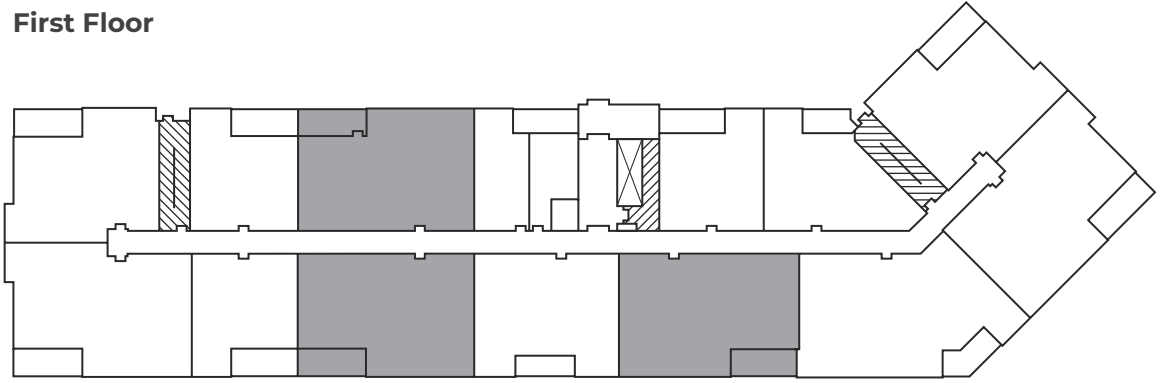
Please note, all floor plans and photos are provided for illustrative purposes only. **ALL MEASUREMENTS ARE APPROXIMATE.** Actual layouts may be different than shown and could vary in size and scale.

118 & 120 Tilbury Avenue,
Bedford, NS

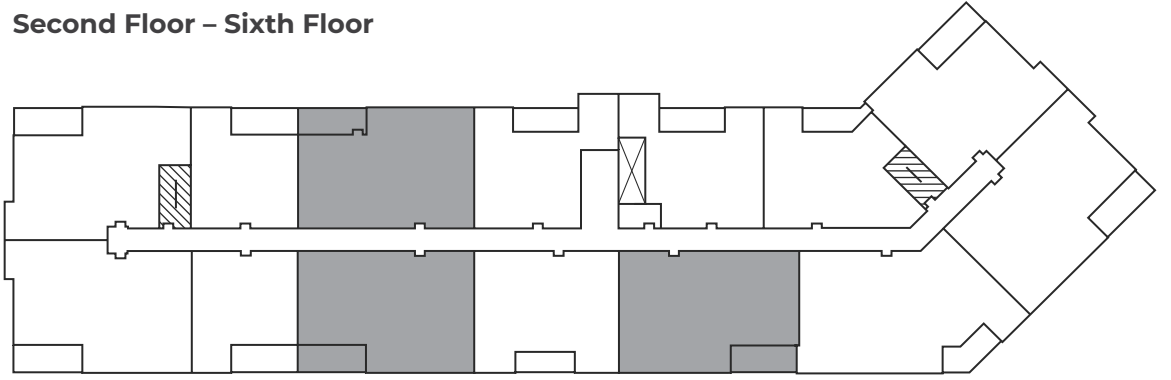
HARBOUR WALK
1505-1538 sq ft

118 Tilbury Avenue

First Floor



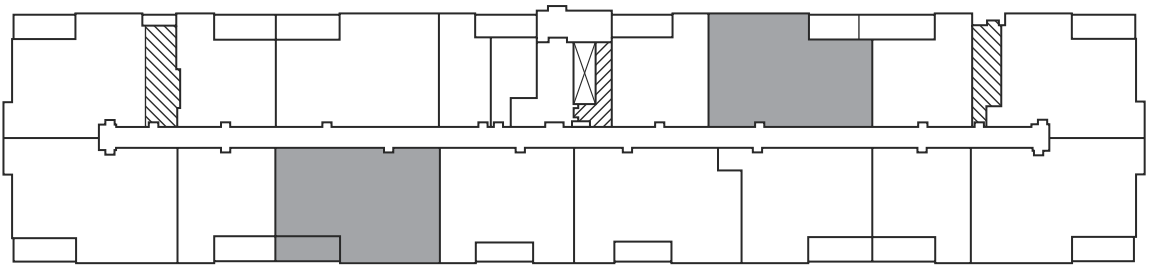
Second Floor – Sixth Floor



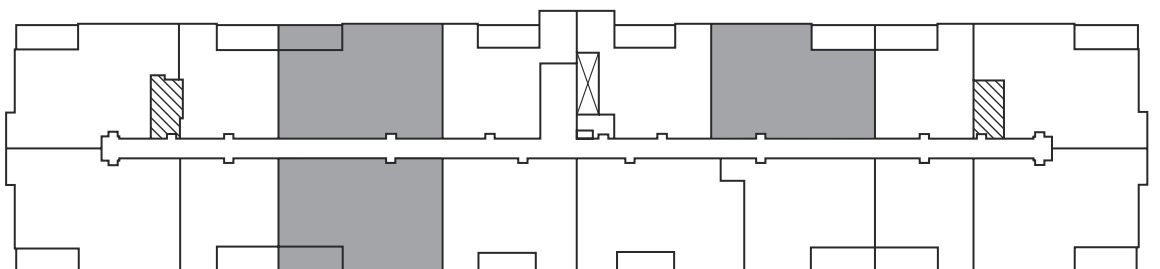
☒ Elevator ☒ Stairwell

120 Tilbury Avenue

First Floor



Second Floor – Sixth Floor



☒ Elevator ☒ Stairwell



BROOKSIDE TERRACE APARTMENTS

118 Tilbury Avenue,
Bedford, NS

HYDROSTONE

1792 sq ft

The floor plan illustrated here includes these finishes:

CABINETS:



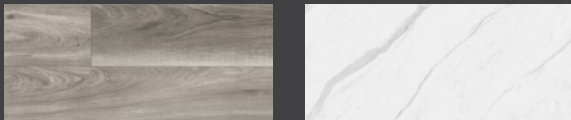
White High-gloss White Charcoal

COUNTERS:

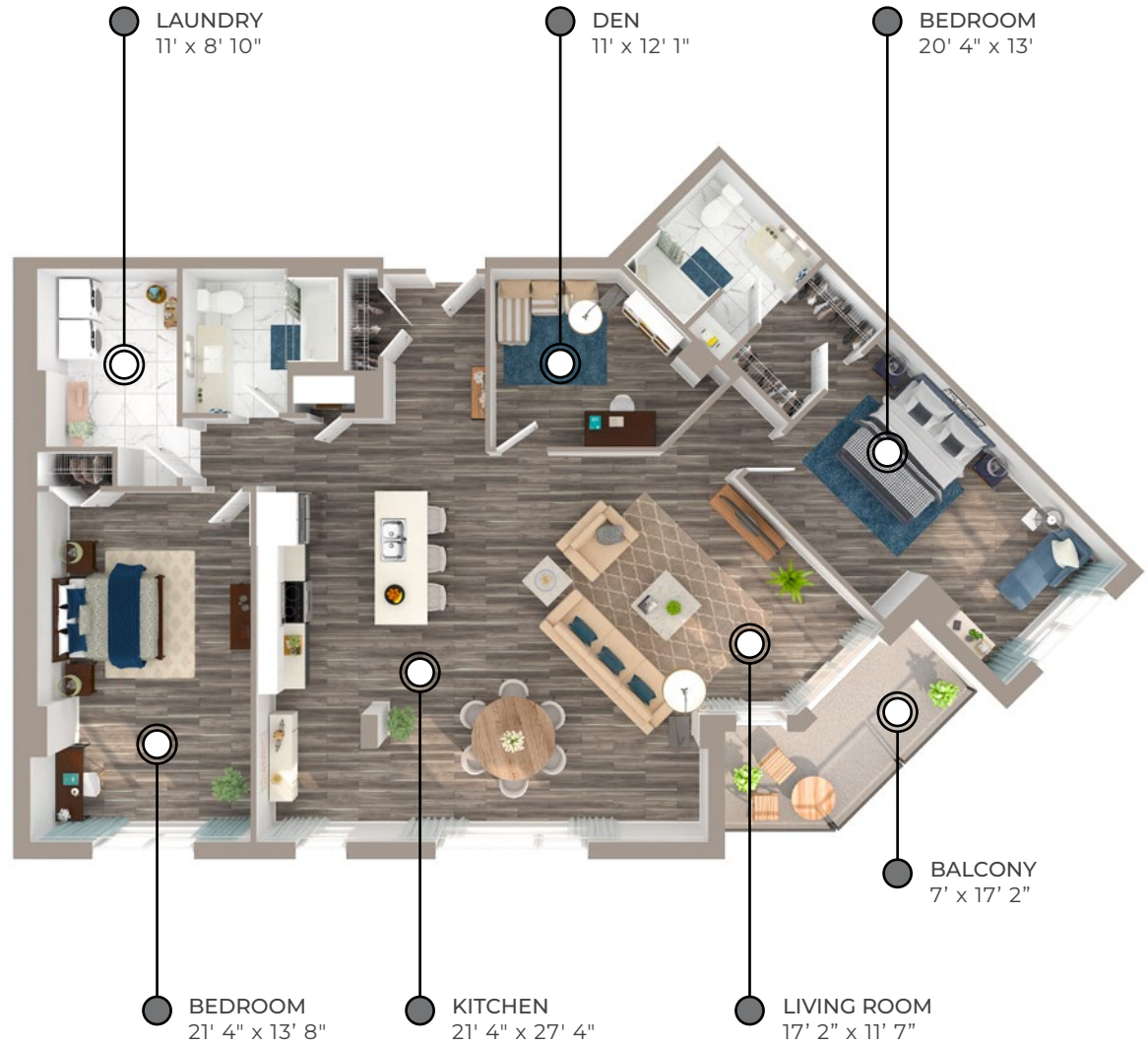


Laminate Quartz

FLOORING:



Luxury vinyl plank Ceramic tile



Please note, all floor plans and photos are provided for illustrative purposes only. **ALL MEASUREMENTS ARE APPROXIMATE.** Actual layouts may be different than shown and could vary in size and scale.



BROOKSIDE TERRACE

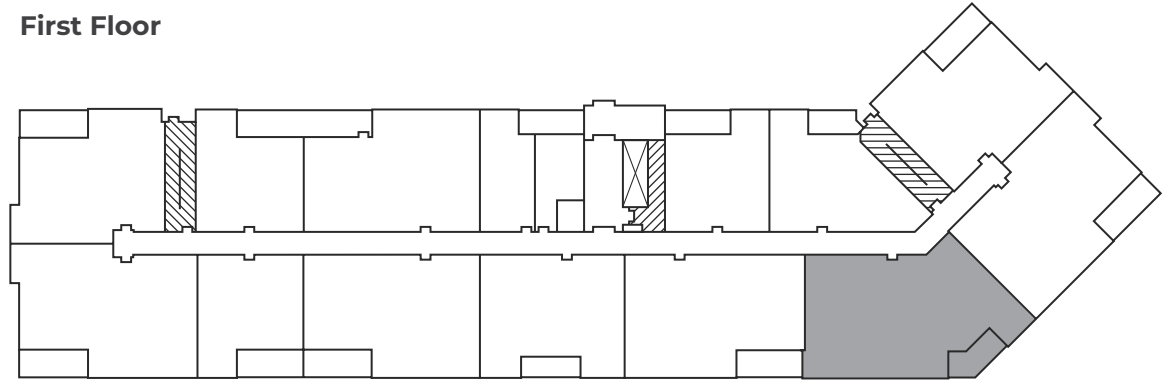
APARTMENTS

118 Tilbury Avenue,
Bedford, NS

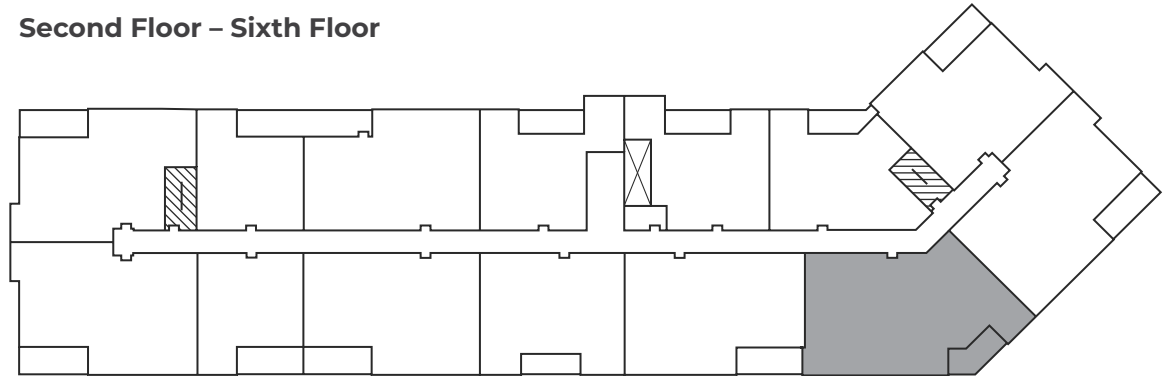
HYDROSTONE

1792 sq ft

First Floor



Second Floor – Sixth Floor



 Elevator  Stairwell