



THAMES  
PARK  
APARTMENTS

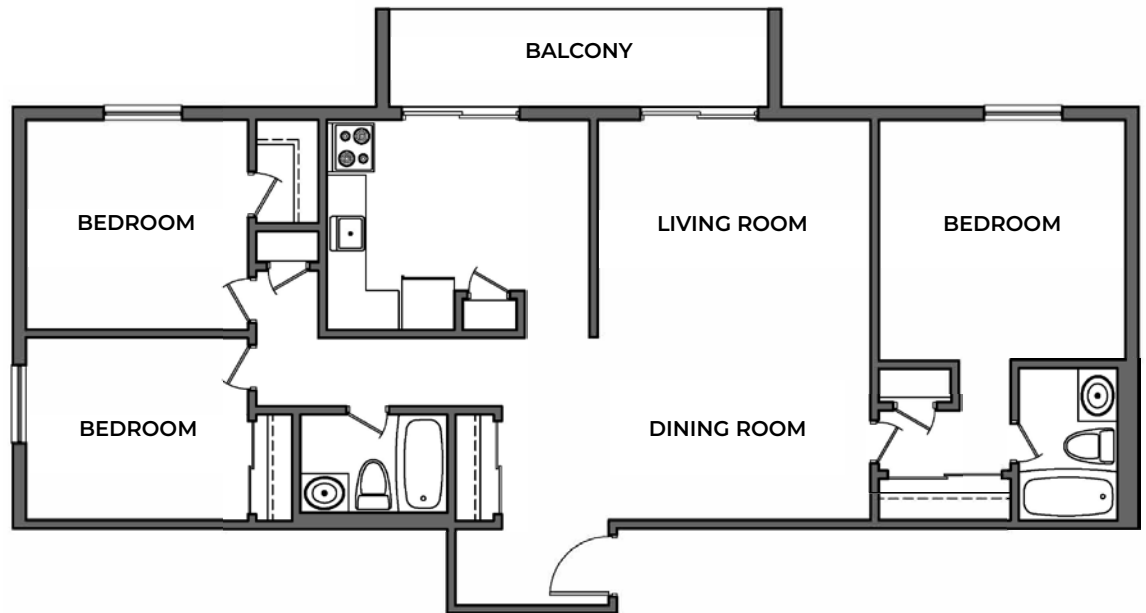
150 Mary Street  
Chatham, ON, N7L 4V2

---

3 BEDROOM

1180 sq ft

---



Please note, all floor plans and photos are provided for illustrative purposes only. ALL MEASUREMENTS ARE APPROXIMATE. Actual layouts may be different than shown and could vary in size and scale.