



# BROOKSIDE TERRACE APARTMENTS

120 Tilbury Avenue,  
Bedford, NS

## VILLAGE GREEN

1533 sq ft

The floor plan illustrated here includes these finishes:

### CABINETS:



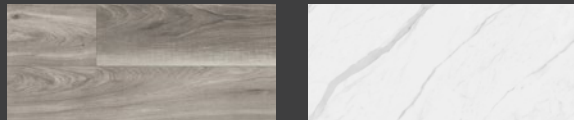
White    High-gloss White    Charcoal

### COUNTERS:

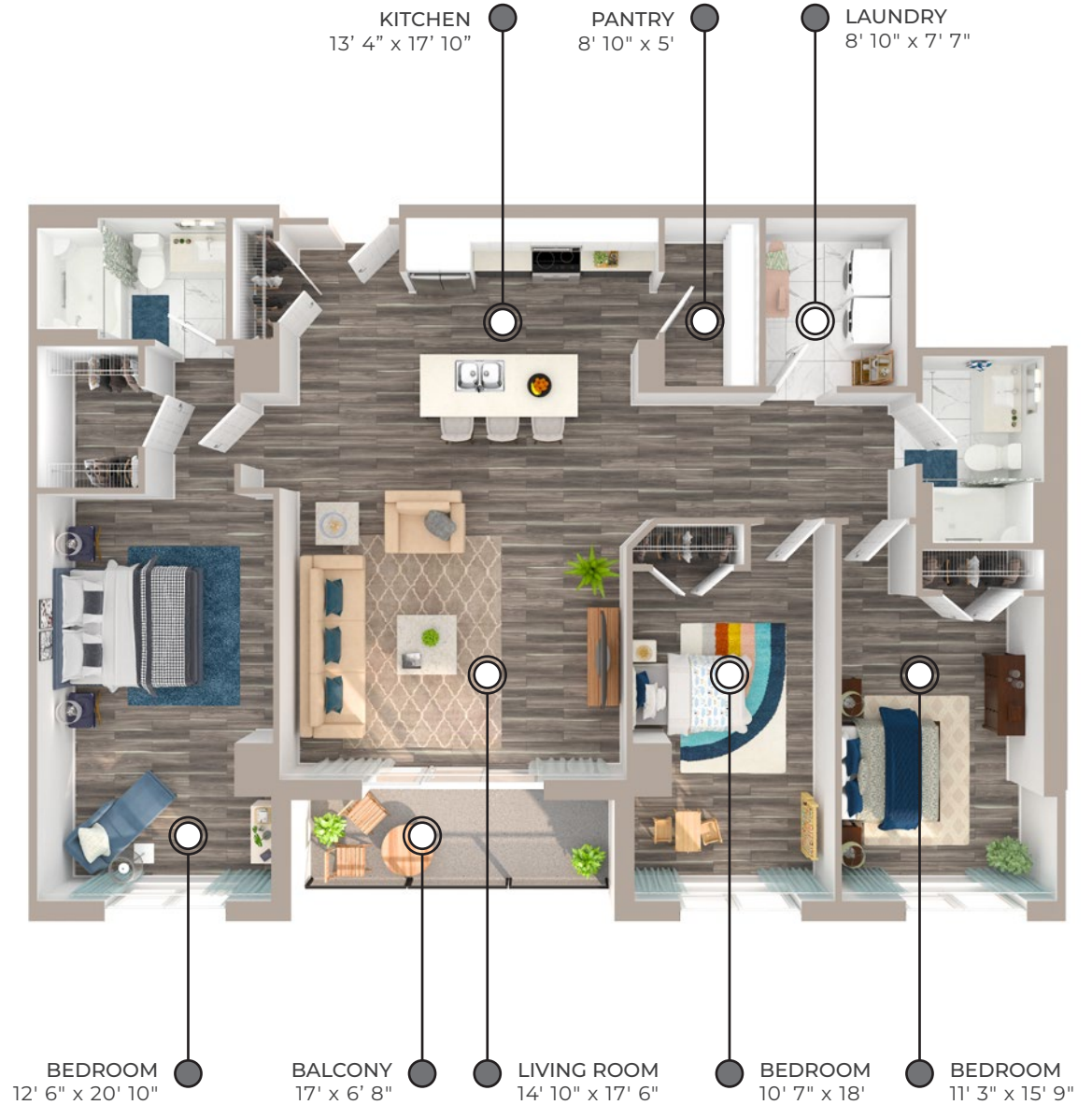


Laminate    Quartz

### FLOORING:



Luxury vinyl plank    Ceramic tile



Please note, all floor plans and photos are provided for illustrative purposes only. **ALL MEASUREMENTS ARE APPROXIMATE.** Actual layouts may be different than shown and could vary in size and scale.



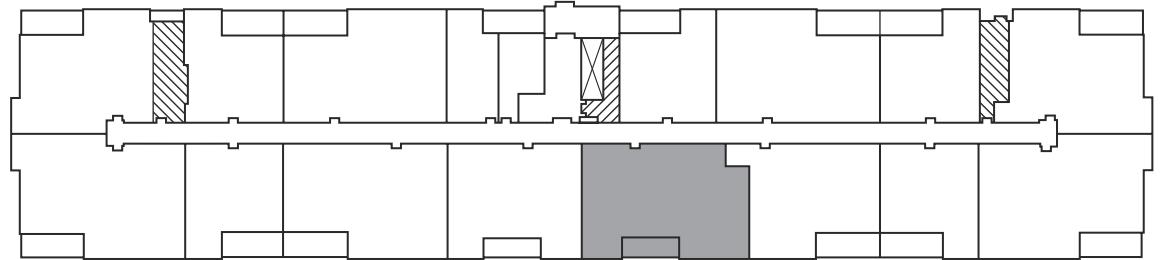
**BROOKSIDE  
TERRACE**  
APARTMENTS

120 Tilbury Avenue,  
Bedford, NS

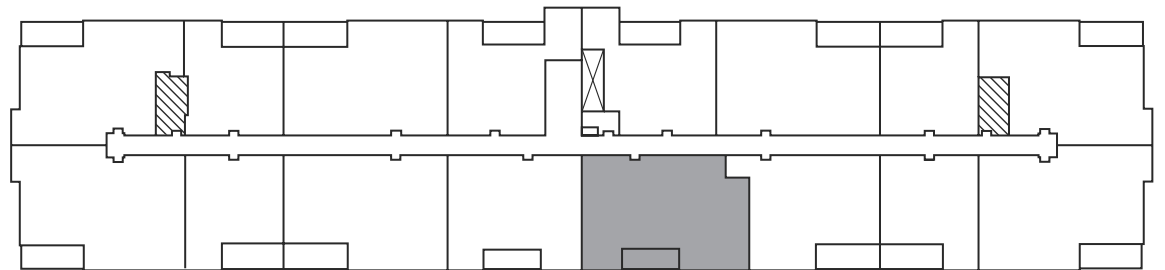
VILLAGE GREEN

**1533** sq ft

**First Floor**



**Second Floor – Sixth Floor**



 Elevator  Stairwell



# BROOKSIDE TERRACE APARTMENTS

118 & 120 Tilbury Avenue,  
Bedford, NS

## RIDGEVALE

1626 sq ft

The floor plan illustrated here includes these finishes:

### CABINETS:



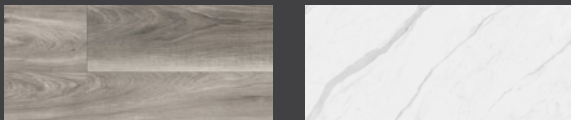
White    High-gloss White    Charcoal

### COUNTERS:

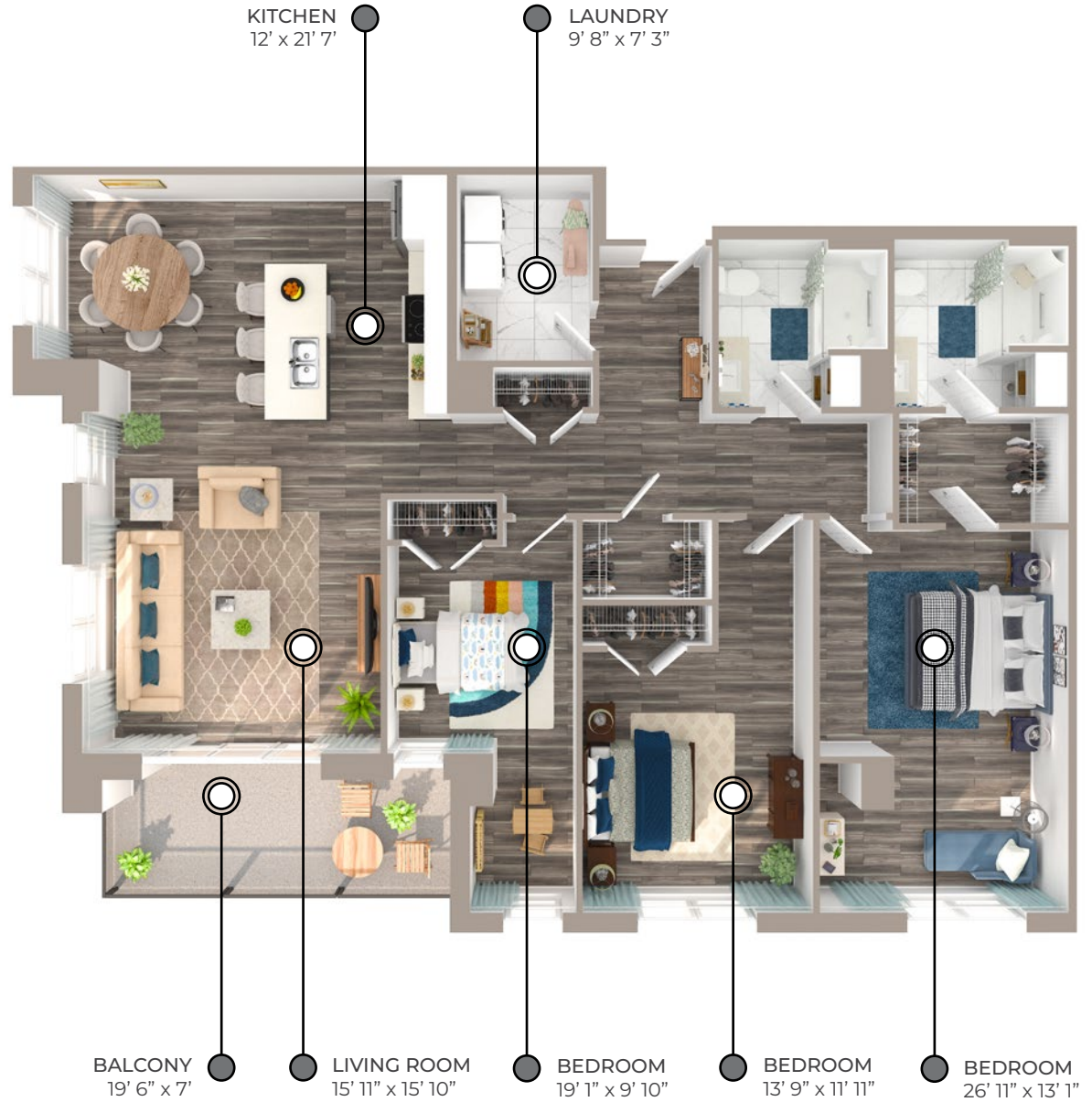


Laminate    Quartz

### FLOORING:



Luxury vinyl plank    Ceramic tile



Please note, all floor plans and photos are provided for illustrative purposes only. **ALL MEASUREMENTS ARE APPROXIMATE.** Actual layouts may be different than shown and could vary in size and scale.

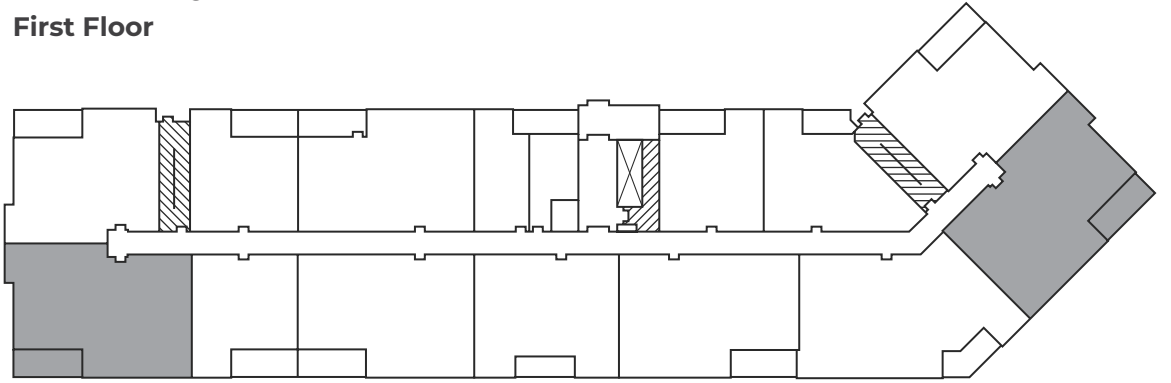
118 & 120 Tilbury Avenue,  
Bedford, NS

**RIDGEVALE**

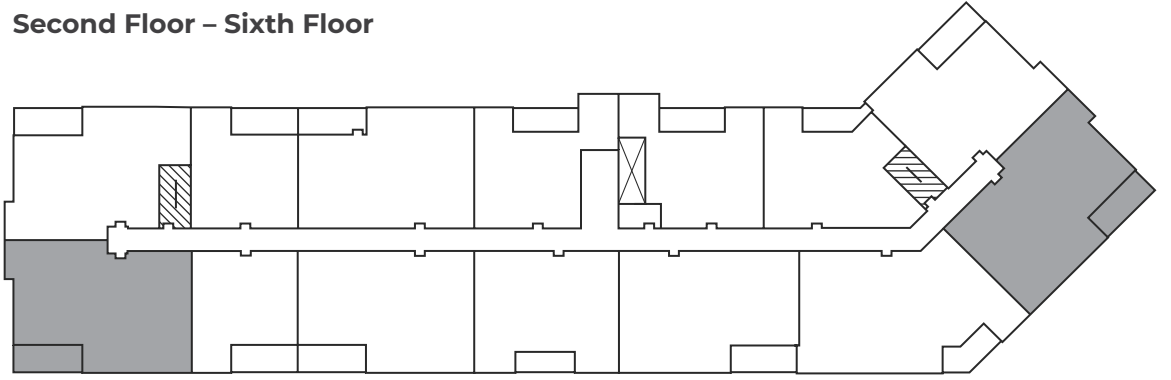
**1626** sq ft

**118 Tilbury Avenue**

**First Floor**



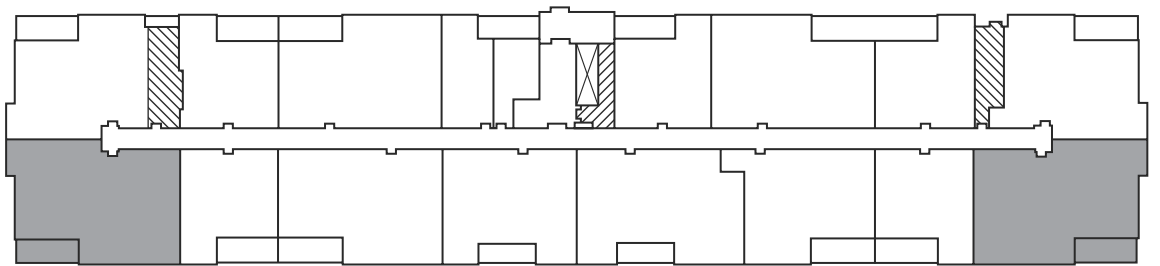
**Second Floor – Sixth Floor**



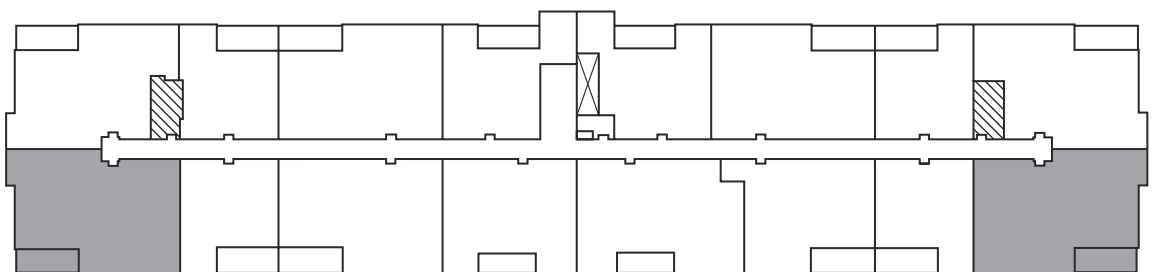
⊠ Elevator   ⊠ Stairwell

**120 Tilbury Avenue**

**First Floor**



**Second Floor – Sixth Floor**



⊠ Elevator   ⊠ Stairwell