



RIVER'S
EDGE
APARTMENTS

53 & 57 Riverview Drive
Chatham, ON

HIGHGATE

1011 sq ft

The illustrated floor plan uses finishes from our exclusive **Palette One** collection, which includes:



CABINETS:
FLAT PANEL

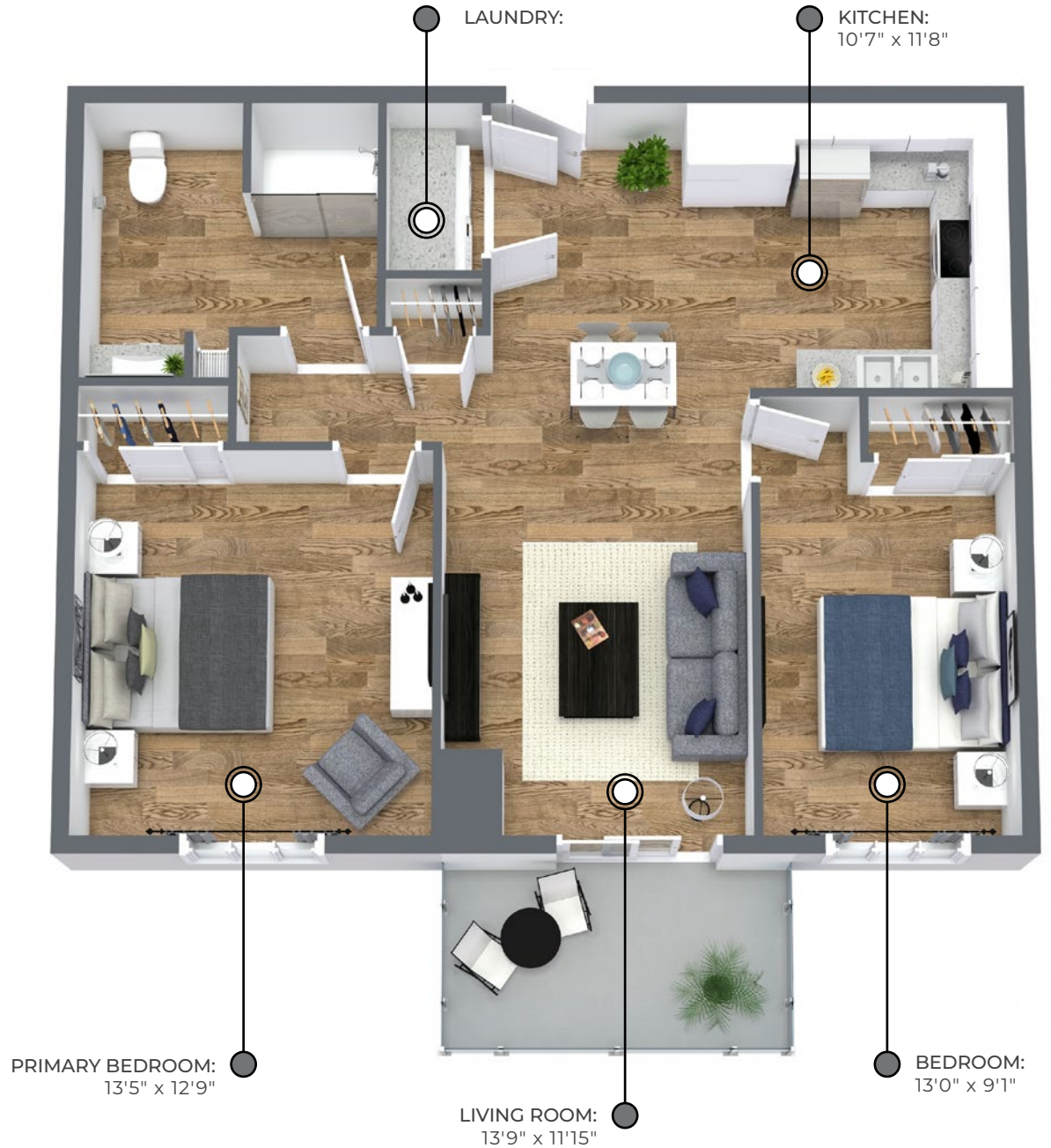


COUNTERS:
QUARTZ



FLOORING:
LUXURY
VINYL PLANK

Palette One finishes are on
levels 1 & 3.



All suite measurements are preliminary based on current building concept and unit configurations and are subject to change.
riversedgeapartments.ca



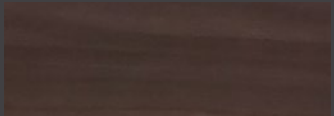
RIVER'S
EDGE
APARTMENTS

53 & 57 Riverview Drive
Chatham, ON

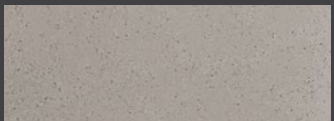
HIGHGATE

1011 sq ft

This suite is also available with finishes from our **Palette Two** collection, which includes:



CABINETS:
FLAT PANEL



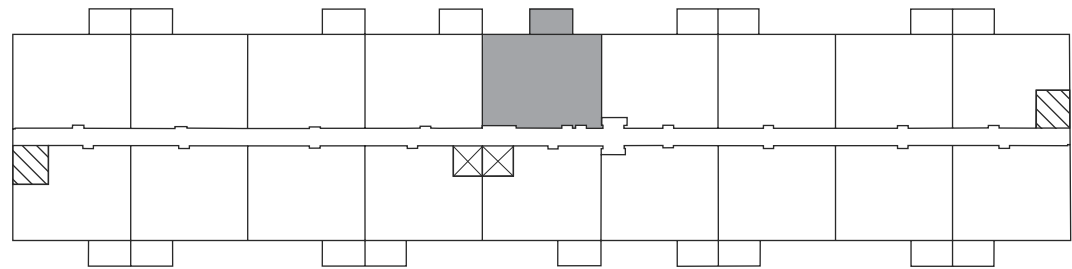
COUNTERS:
QUARTZ



FLOORING:
LUXURY
VINYL PLANK

Palette Two finishes are on
levels 2 & 4.

Second Floor - Third Floor



 Elevator  Stairwell



RIVER'S
EDGE
APARTMENTS

53 & 57 Riverview Drive
Chatham, ON

BOTHWELL
1003-1010 sq ft

The illustrated floor plan uses finishes from our exclusive **Palette One** collection, which includes:



CABINETRY:
FLAT PANEL

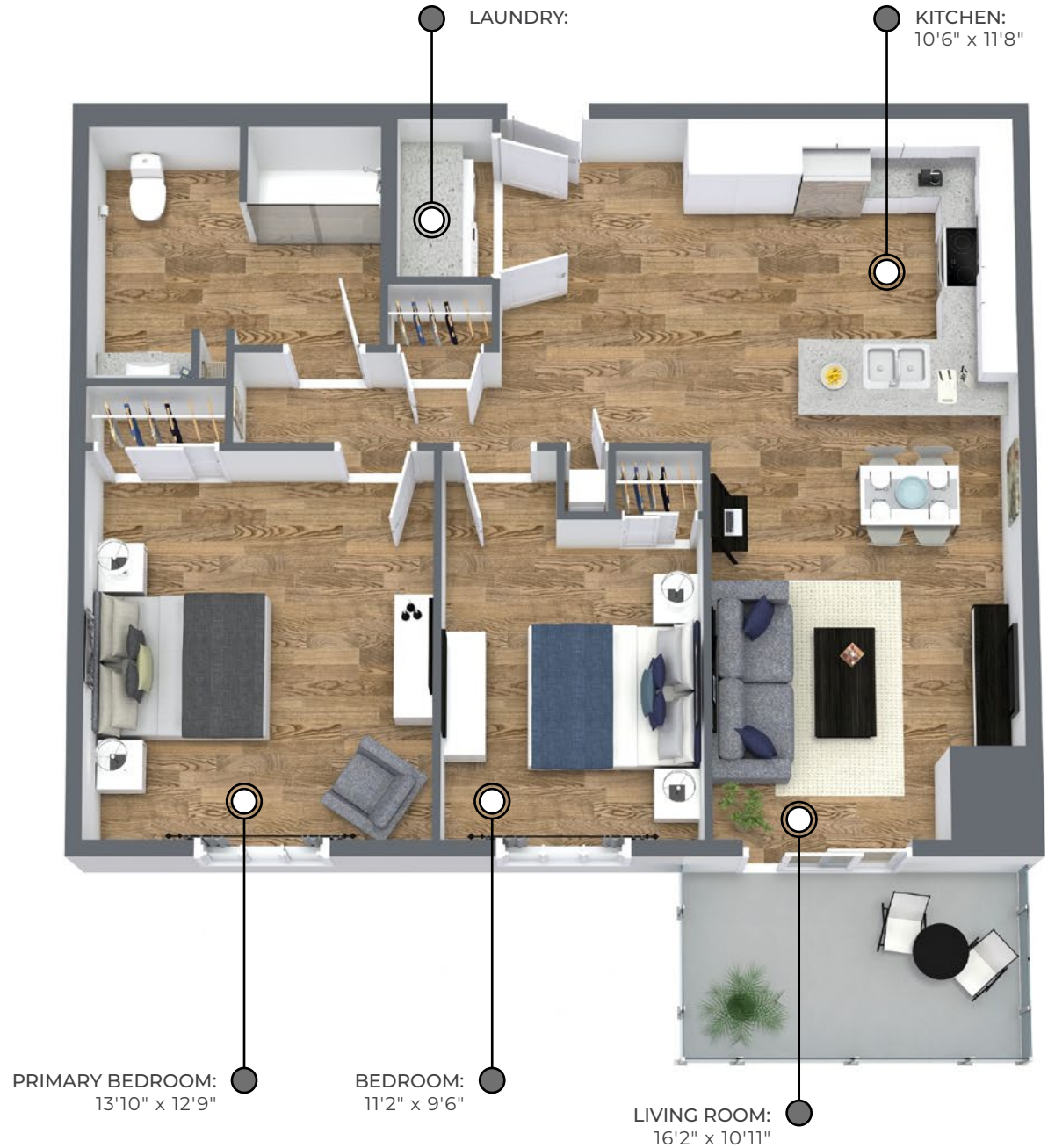


COUNTERS:
QUARTZ



FLOORING:
LUXURY
VINYL PLANK

Palette One finishes are on
levels 1 & 3.



All suite measurements are preliminary based on current building concept and unit configurations and are subject to change.
riversedgeapartments.ca



RIVER'S EDGE APARTMENTS

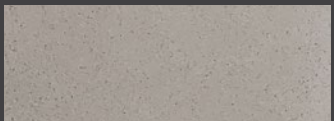
53 & 57 Riverview Drive
Chatham, ON

BOTHWELL 1003-1010 sq ft

This suite is also available with finishes from our **Palette Two** collection, which includes:



CABINETS:
FLAT PANEL



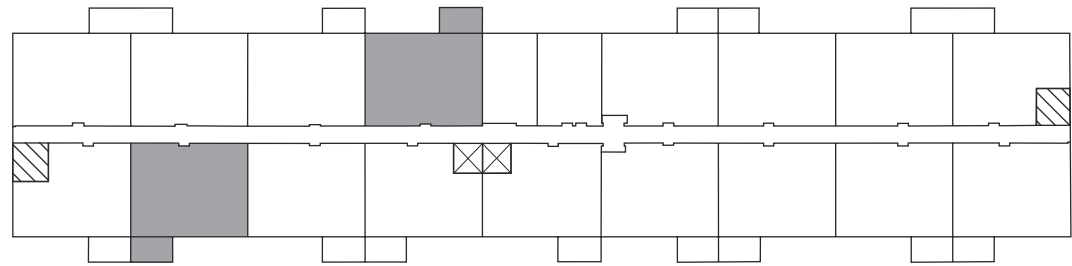
COUNTERS:
QUARTZ



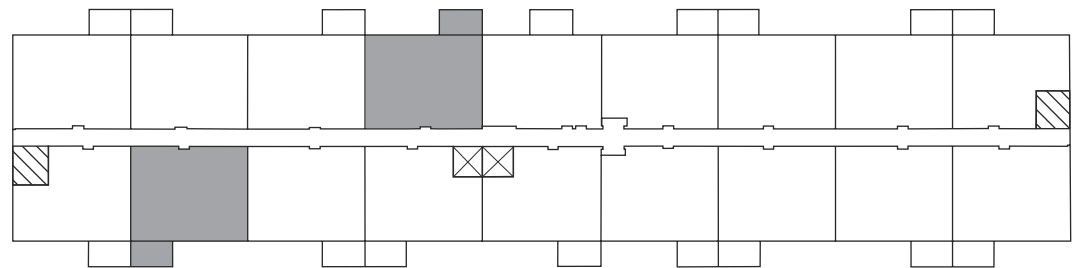
FLOORING:
LUXURY
VINYL PLANK

Palette Two finishes are on
levels 2 & 4.

First Floor



Second Floor - Fourth Floor



 Elevator  Stairwell



RIVER'S EDGE APARTMENTS

53 & 57 Riverview Drive
Chatham, ON

TILBURY

927 sq ft

The illustrated floor plan uses finishes from our exclusive **Palette One** collection, which includes:



CABINETRY:
FLAT PANEL



COUNTERS:
QUARTZ



FLOORING:
LUXURY
VINYL PLANK

Palette One finishes are on
levels 1 & 3.



All suite measurements are preliminary based on current building concept and unit configurations and are subject to change.
riversedgeapartments.ca



RIVER'S EDGE APARTMENTS

53 & 57 Riverview Drive
Chatham, ON

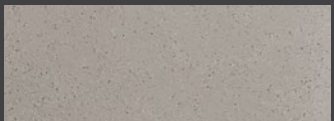
TILBURY

927 sq ft

This suite is also available with finishes from our **Palette Two** collection, which includes:



CABINETS:
FLAT PANEL



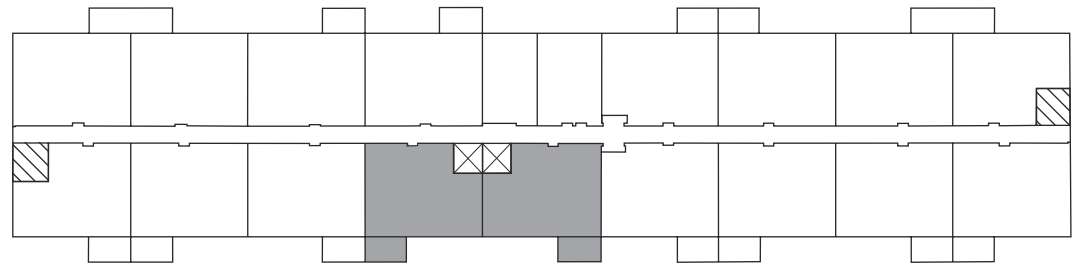
COUNTERS:
QUARTZ



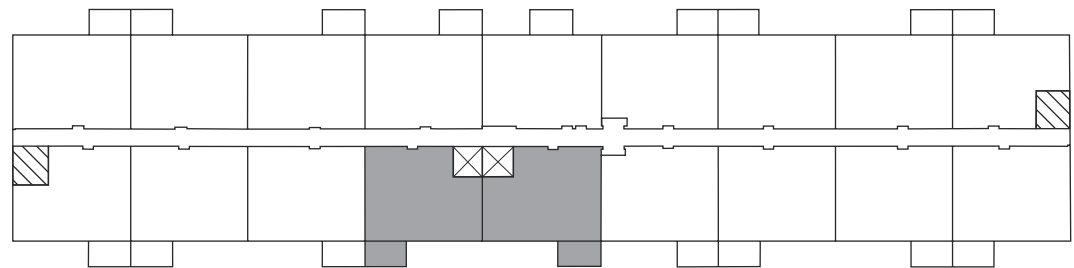
FLOORING:
LUXURY
VINYL PLANK

Palette Two finishes are on
levels 2 & 4.

First Floor



Second Floor - Fourth Floor



Elevator Stairwell



RIVER'S
EDGE
APARTMENTS

53 & 57 Riverview Drive
Chatham, ON

DRESDEN

904 sq ft

The illustrated floor plan uses finishes from our exclusive **Palette One** collection, which includes:



CABINETRY:
FLAT PANEL



COUNTERS:
QUARTZ



FLOORING:
LUXURY
VINYL PLANK

Palette One finishes are on
levels 1 & 3.



All suite measurements are preliminary based on current building concept and unit configurations and are subject to change.
riversedgeapartments.ca



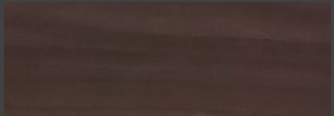
RIVER'S EDGE APARTMENTS

53 & 57 Riverview Drive
Chatham, ON

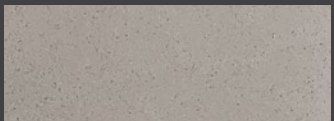
DRESDEN

904 sq ft

This suite is also available with finishes from our **Palette Two** collection, which includes:



CABINETS:
FLAT PANEL



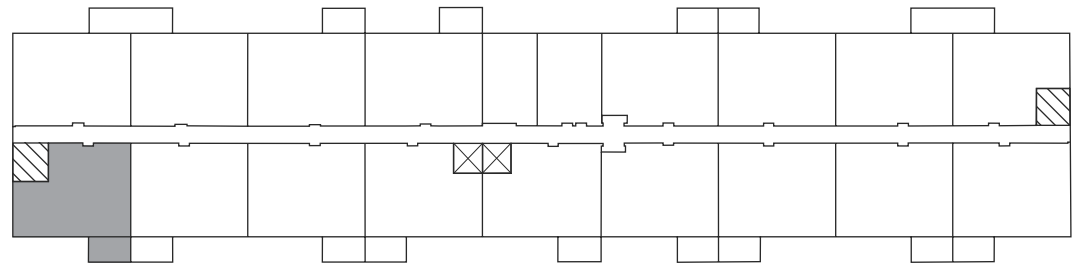
COUNTERS:
QUARTZ



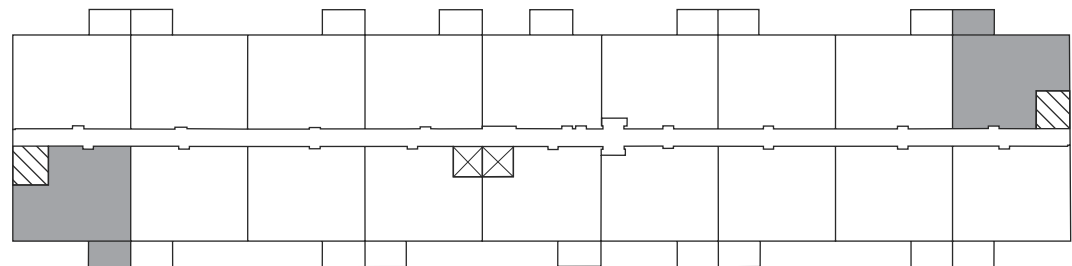
FLOORING:
LUXURY
VINYL PLANK

Palette Two finishes are on
levels 2 & 4.

First Floor



Second Floor - Fourth Floor



Elevator Stairwell