



MEREWOOD APARTMENTS

377 & 385 Moilliet Street South
Parksville, BC

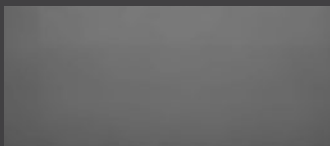
CYPRESS

795-856 sq ft

The floor plan illustrated here
includes these finishes:



CABINETRY:
FLAT SLAB



COUNTERS:
QUARTZ



FLOORING:
LUXURY
VINYL TILE



- | | | | | |
|---|--------------------------------------|------------------------------|------------------------------------|--------------------------------|
| 1 Kitchen/Dining
17' x 12' 8" | 2 Living Room
12' x 10' 8" | 3 Bathroom
5' x 8' | 4 Bedroom
12' 1" x 9' 6" | 5 Ensuite
8' 7" x 5' |
| 6 Bedroom
9' 2" x 11' | 7 Laundry
5' x 3' 6" | 8 Balcony
7' x 12' | | |

Please note, all floor plans and photos are provided for illustrative purposes only. ALL MEASUREMENTS ARE APPROXIMATE. Actual layouts may be different than shown and could vary in size and scale. merewoodapartments.ca



MEREWOOD APARTMENTS

377 & 385 Moilliet Street South
Parksville, BC

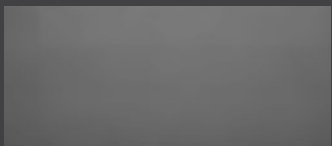
COTTONWOOD

848-897 sq ft

The floor plan illustrated here
includes these finishes:



CABINETRY:
FLAT SLAB



COUNTERS:
QUARTZ



FLOORING:
LUXURY
VINYL TILE



- | | | | | |
|--------------------------------------|--------------------------------------|---------------------------------|--------------------------------------|--------------------------------|
| 1 Kitchen/Dining
12' x 13' | 2 Living Room
10' x 11' 3" | 3 Bathroom
8' 2" x 5' | 4 Bedroom
13' 7" x 10' 10" | 5 Ensuite
5' x 9' 6" |
| 6 Bedroom
12' x 9' | 7 Laundry
5' x 3' | 8 Balcony
7' x 12' | | |

Please note, all floor plans and photos are provided for illustrative purposes only. ALL MEASUREMENTS ARE APPROXIMATE. Actual layouts may be different than shown and could vary in size and scale. merewoodapartments.ca



MEREWOOD APARTMENTS

377 & 385 Moilliet Street South
Parksville, BC

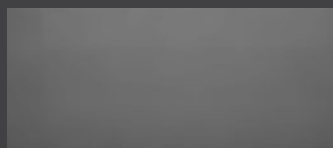
REDWOOD

850 sq ft

The floor plan illustrated here
includes these finishes:



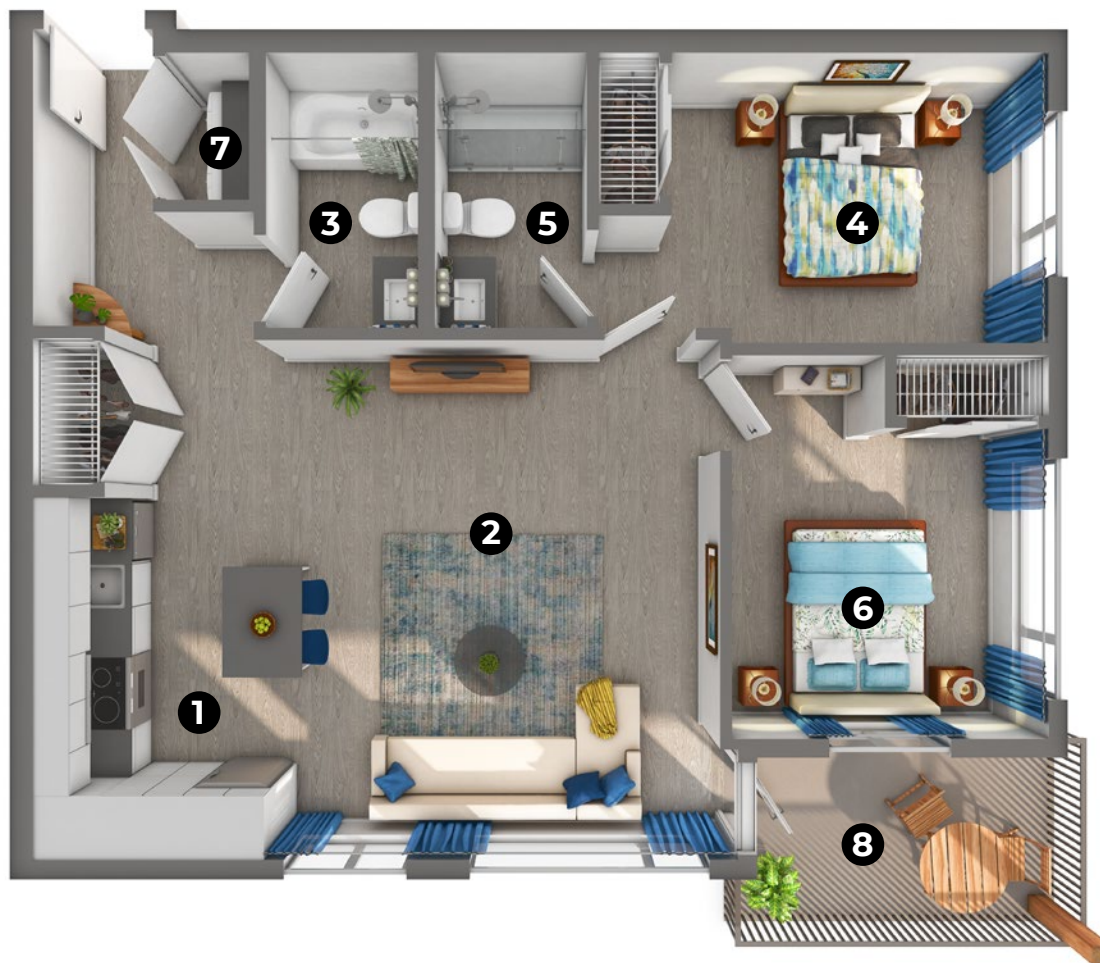
CABINETRY:
FLAT SLAB



COUNTERS:
QUARTZ



FLOORING:
LUXURY
VINYL TILE



- | | | | | |
|-------------------------------------|-----------------------------------|----------------------------------|------------------------------------|-----------------------------|
| 1 Kitchen/Dining
9' x 17' | 2 Living Room
14' x 17' | 3 Bathroom
9' x 5' | 4 Bedroom
14' 8" x 9' 6" | 5 Ensuite
9' x 5' |
| 6 Bedroom
10' 10" x 13' | 7 Laundry
3' x 4' 10" | 8 Balcony
11' 10" x 7' | | |

Please note, all floor plans and photos are provided for illustrative purposes only. ALL MEASUREMENTS ARE APPROXIMATE. Actual layouts may be different than shown and could vary in size and scale. merewoodapartments.ca



MEREWOOD APARTMENTS

377 & 385 Moilliet Street South
Parksville, BC

CHESTNUT 858-870 sq ft

The floor plan illustrated here
includes these finishes:

CABINETRY:
FLAT SLAB

COUNTERS:
QUARTZ

FLOORING:
LUXURY
VINYL TILE



- | | | | | |
|--|--------------------------------|--------------------------------------|---------------------------------|---------------------------------|
| 1 Kitchen
11' 9" x 11' 8" | 2 Dining
6' 3" x 9' | 3 Living Room
12' x 10' 8" | 4 Bathroom
5' x 8' 4" | 5 Bedroom
9' 9" x 12' |
| 6 Walk-in Closet
8' 4" x 7' 5" | 7 Ensuite
5' x 7' 4" | 8 Bedroom
9' 9" x 10' 9" | 9 Laundry
3' x 7' 2" | 10 Balcony
7' x 12' |

Please note, all floor plans and photos are provided for illustrative purposes only. ALL MEASUREMENTS ARE APPROXIMATE. Actual layouts may be different than shown and could vary in size and scale. merewoodapartments.ca



MEREWOOD APARTMENTS

411 & 423 Despard Avenue
Parksville, BC

OLIVE

738 sq ft

The floor plan illustrated here
includes these finishes:

CABINETRY:
FLAT SLAB

COUNTERS:
QUARTZ

FLOORING:
LUXURY
VINYL TILE

CARPET:
TEXTURED
CUT PILE



All suite measurements are preliminary based on current building
concept and unit configurations and are subject to change.



MEREWOOD APARTMENTS

411 & 423 Despard Avenue
Parksville, BC

BALSAM 801-807 sq ft

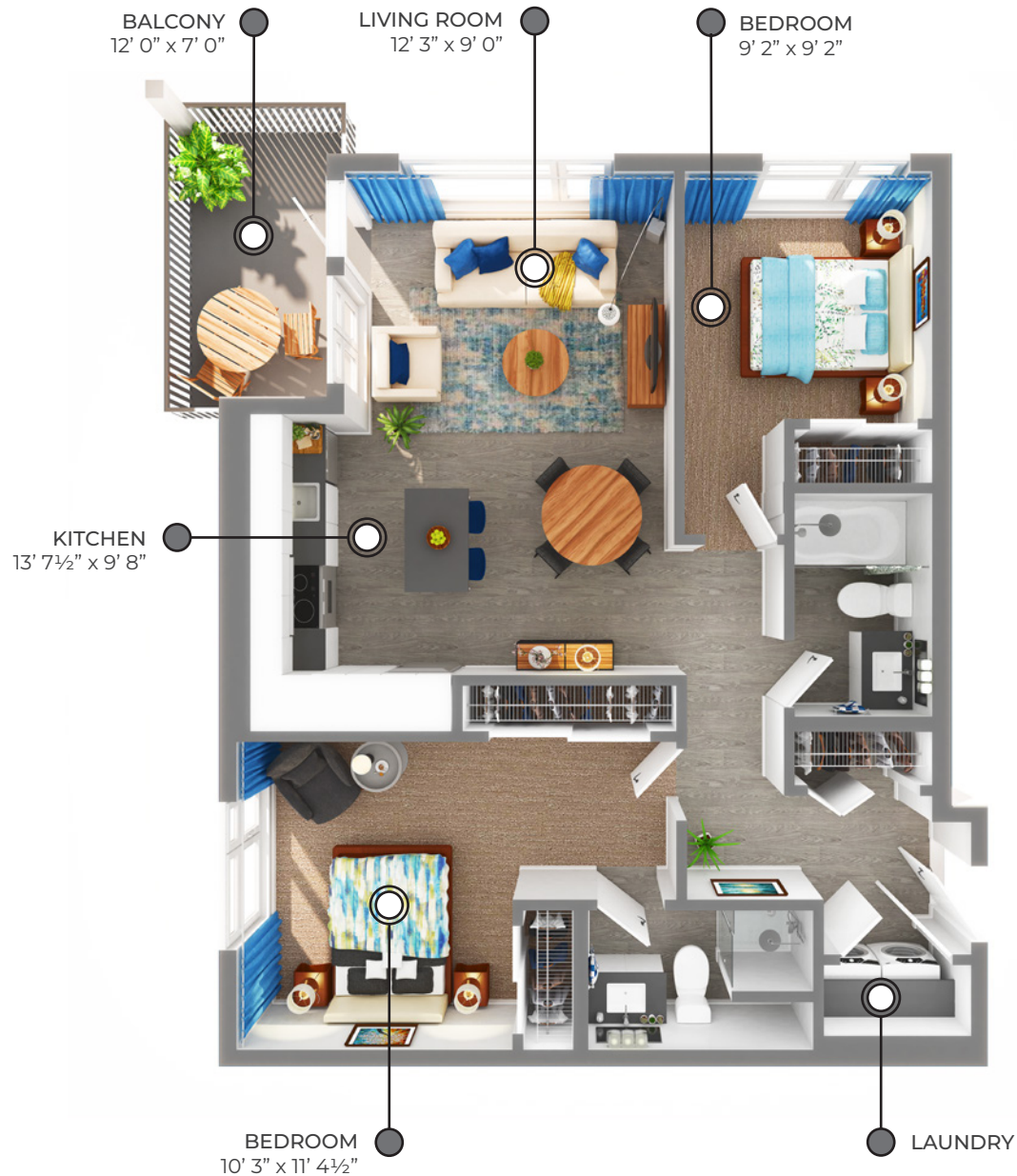
The floor plan illustrated here
includes these finishes:

CABINETS:
FLAT SLAB

COUNTERS:
QUARTZ

FLOORING:
LUXURY
VINYL TILE

CARPET:
TEXTURED
CUT PILE



All suite measurements are preliminary based on current building
concept and unit configurations and are subject to change.



MEREWOOD APARTMENTS

411 & 423 Despard Avenue
Parksville, BC

JUNIPER 814 sq ft

The floor plan illustrated here
includes these finishes:

CABINETRY:
FLAT SLAB

COUNTERS:
QUARTZ

FLOORING:
LUXURY
VINYL TILE

CARPET:
TEXTURED
CUT PILE



All suite measurements are preliminary based on current building concept and unit configurations and are subject to change.



MEREWOOD APARTMENTS

411 & 423 Despard Avenue
Parksville, BC

CEDAR

823 sq ft

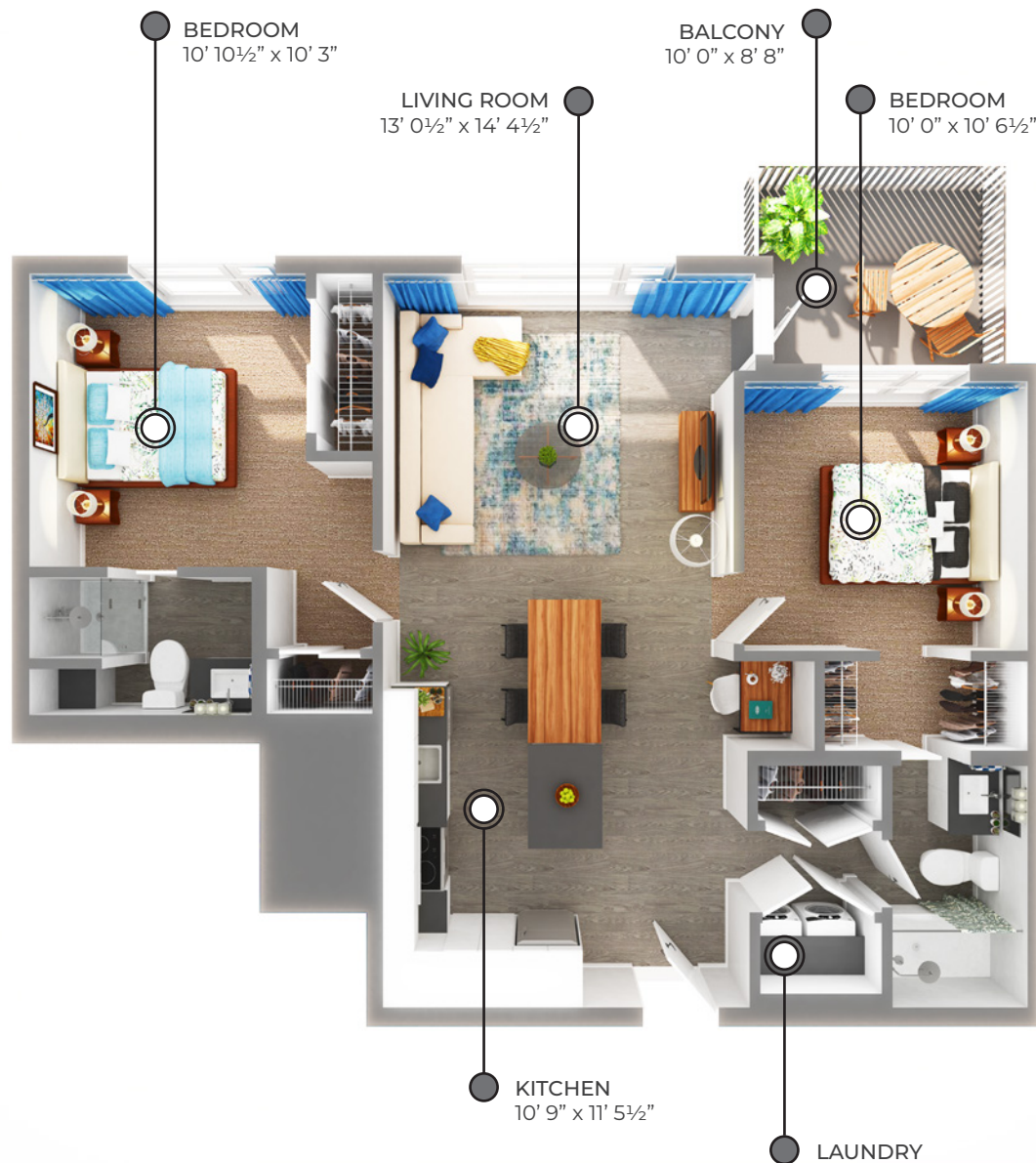
The floor plan illustrated here
includes these finishes:

CABINETRY:
FLAT SLAB

COUNTERS:
QUARTZ

FLOORING:
LUXURY
VINYL TILE

CARPET:
TEXTURED
CUT PILE



All suite measurements are preliminary based on current building concept and unit configurations and are subject to change.



MEREWOOD APARTMENTS

411 & 423 Despard Avenue
Parksville, BC

SPRUCE

844 sq ft

The floor plan illustrated here
includes these finishes:

CABINETRY:
FLAT SLAB

COUNTERS:
QUARTZ

FLOORING:
LUXURY
VINYL TILE

CARPET:
TEXTURED
CUT PILE



All suite measurements are preliminary based on current building concept and unit configurations and are subject to change.