



MEREWOOD APARTMENTS

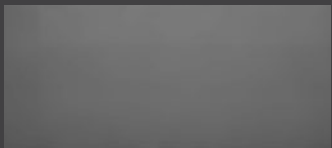
377 & 385 Moilliet Street South
Parksville, BC

PINE 776-786 sq ft

The floor plan illustrated here includes these finishes:



CABINETRY:
FLAT SLAB



COUNTERS:
QUARTZ



FLOORING:
LUXURY
VINYL TILE



- 1** Kitchen/Dining 16' 1" x 13' 3"
- 2** Living Room 11' 6" x 11' 8"
- 3** Bathroom 8' 2" x 5'
- 4** Bedroom 9' 2" x 11' 3"
- 5** Bedroom 8' 8" x 11' 3"
- 6** Laundry 3' 10" x 4' 10"
- 7** Balcony 7' x 12'

Please note, all floor plans and photos are provided for illustrative purposes only. ALL MEASUREMENTS ARE APPROXIMATE. Actual layouts may be different than shown and could vary in size and scale. merewoodapartments.ca



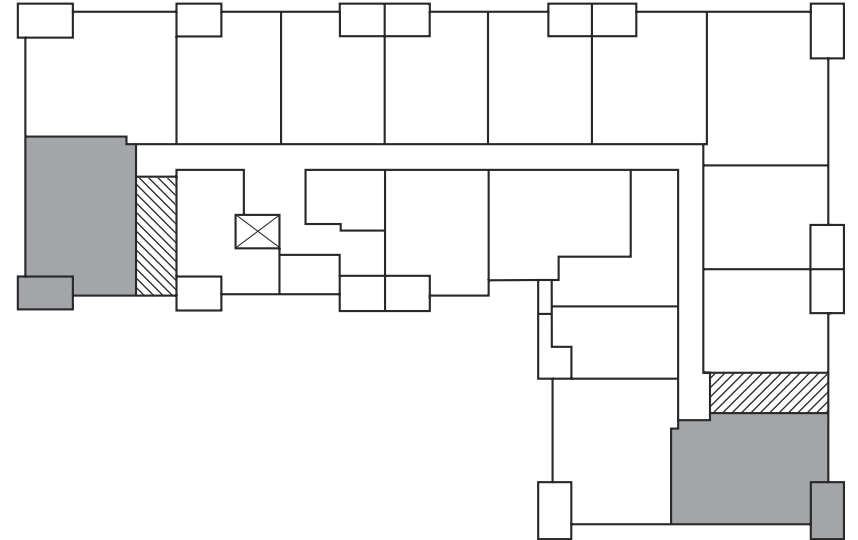
MEREWOOD APARTMENTS



377 & 385 Moilliet Street South
Parksville, BC

PINE
776-786 sq ft

377 Moilliet Street South

First Floor



 Elevator  Stairwell
