



MEREWOOD APARTMENTS

411 & 423 Despard Avenue
Parksville, BC

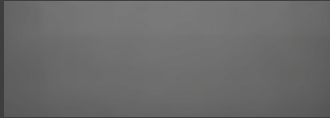
ALDER

564 sq ft

The floor plan illustrated here
includes these finishes:



CABINETS:
FLAT SLAB



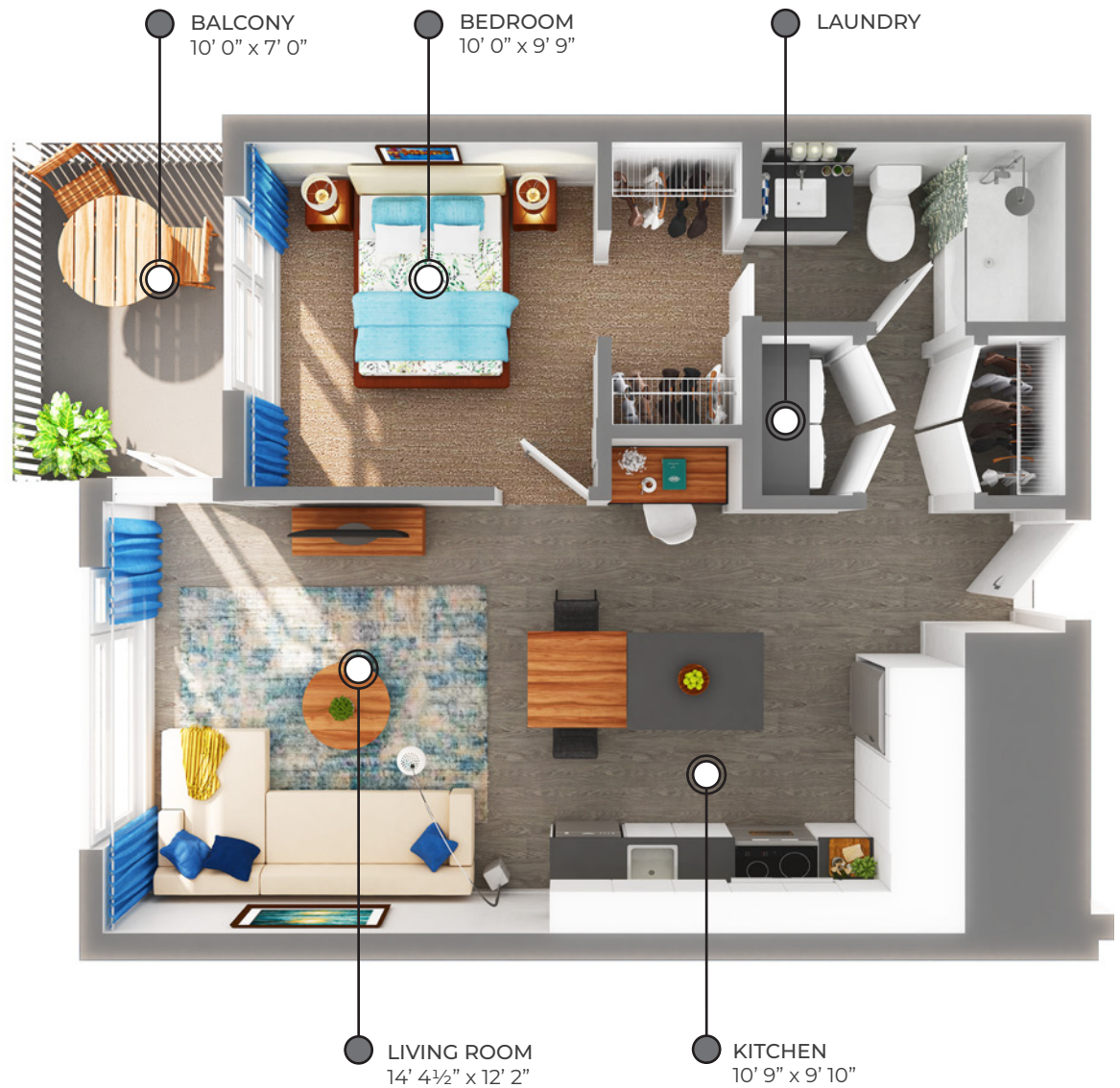
COUNTERS:
QUARTZ



FLOORING:
LUXURY
VINYL TILE



CARPET:
TEXTURED
CUT PILE



All suite measurements are preliminary based on current building
concept and unit configurations and are subject to change.



MEREWOOD APARTMENTS

411 & 423 Despard Avenue
Parksville, BC

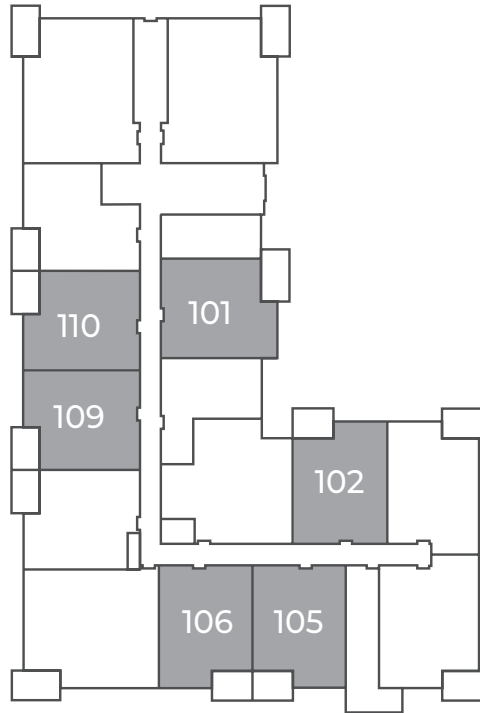
ALDER

564 sq ft

423 Despard Avenue

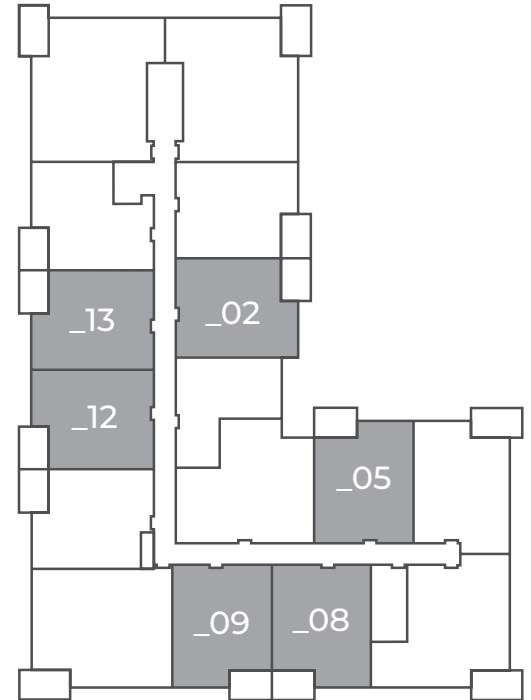
First Floor

Suites: 101, 102, 105, 106, 109, 110



Second Floor – Fourth Floor

Suites: 202, 205, 208, 209, 212, 213, 302, 305, 308, 309, 312, 313, 402, 405, 408, 409, 412, 413





MEREWOOD APARTMENTS

411 & 423 Despard Avenue
Parksville, BC

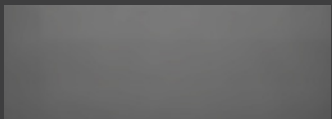
ELDERBERRY

544 sq ft

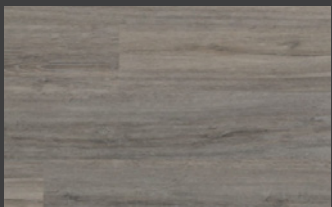
The floor plan illustrated here
includes these finishes:



CABINETRY:
FLAT SLAB



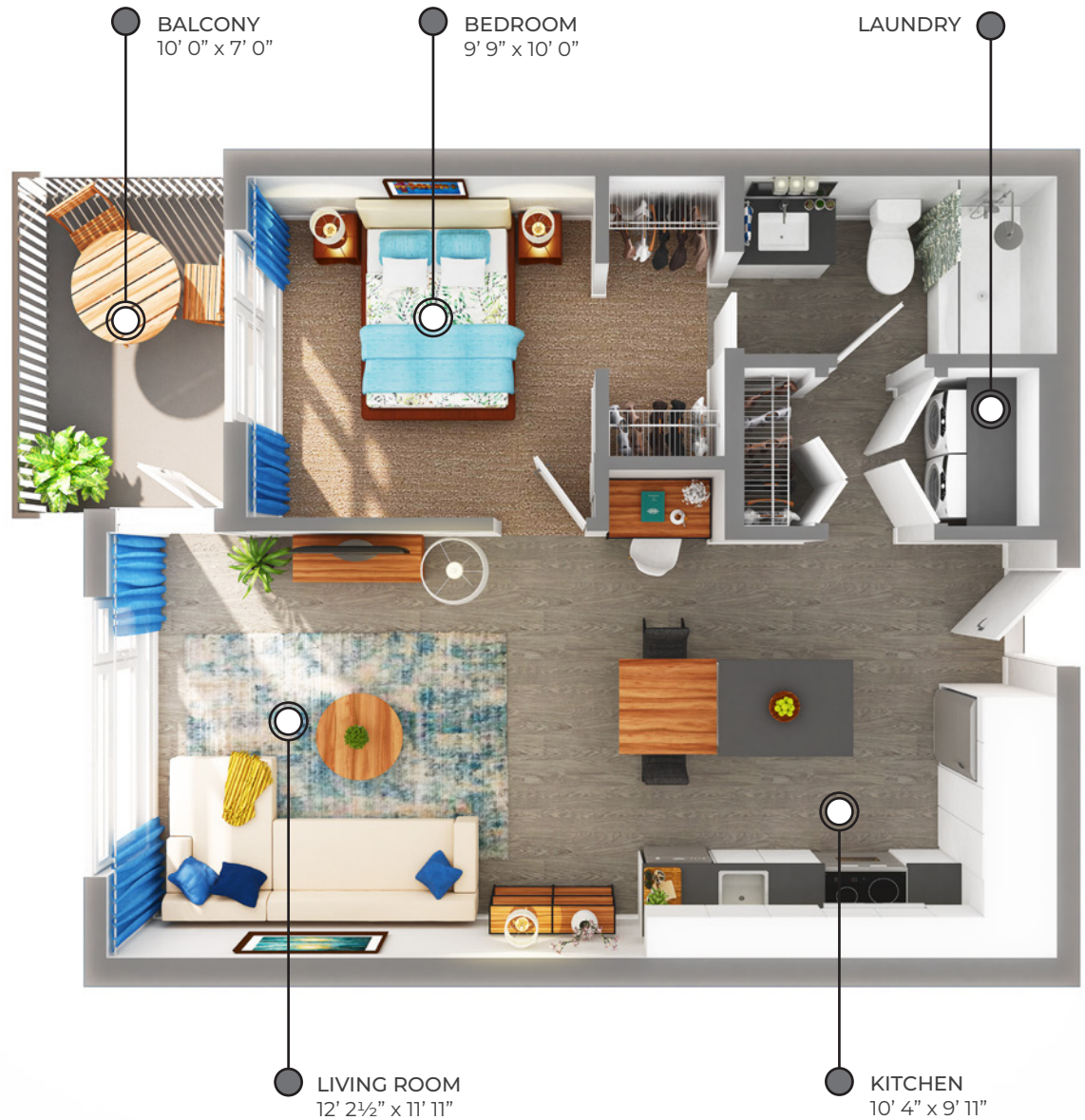
COUNTERS:
QUARTZ



FLOORING:
LUXURY
VINYL TILE



CARPET:
TEXTURED
CUT PILE



All suite measurements are preliminary based on current building concept and unit configurations and are subject to change.



MEREWOOD APARTMENTS

411 & 423 Despard Avenue
Parksville, BC

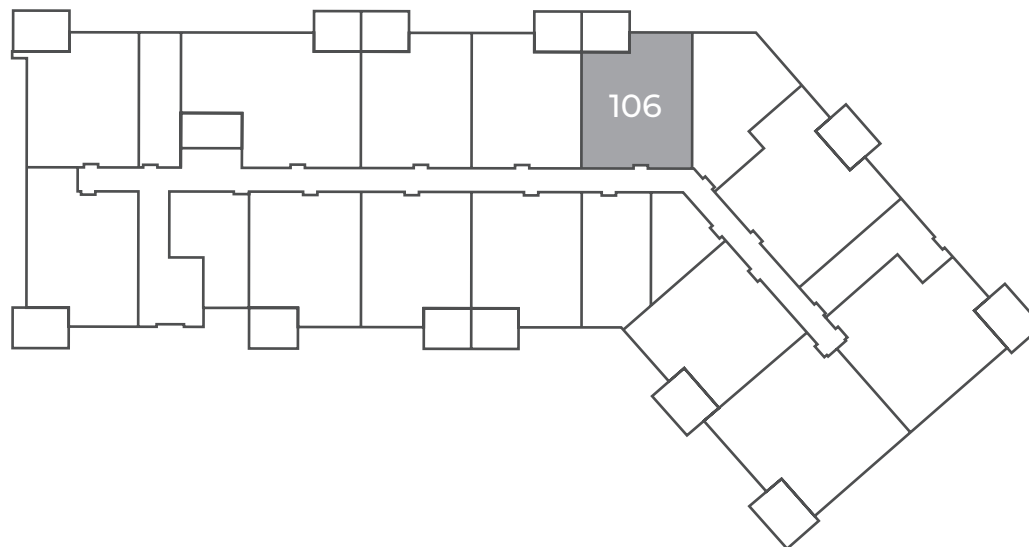
ELDERBERRY

544 sq ft

411 Despard Avenue

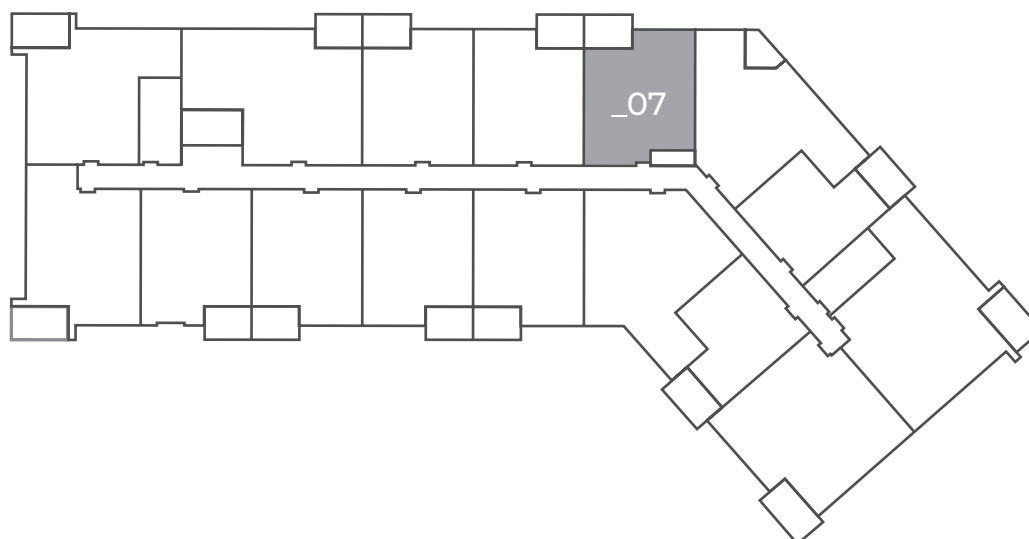
First Floor

Suite: 106



Second Floor – Fourth Floor

Suites: 207, 307, 407





MEREWOOD APARTMENTS

411 & 423 Despard Avenue
Parksville, BC

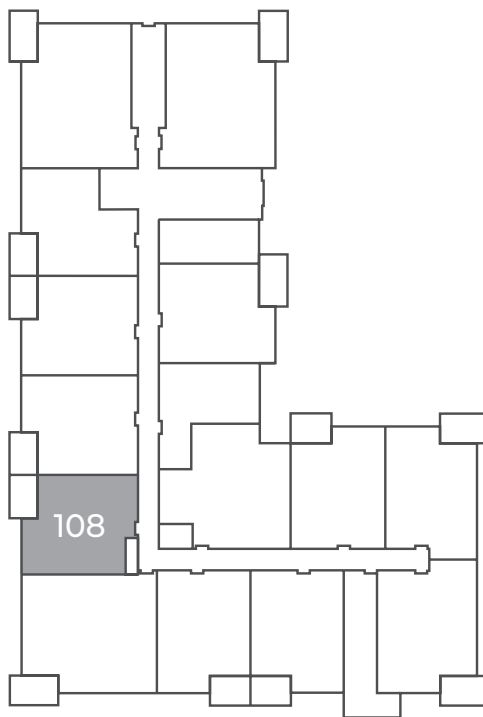
ELDERBERRY

544 sq ft

423 Despard Avenue

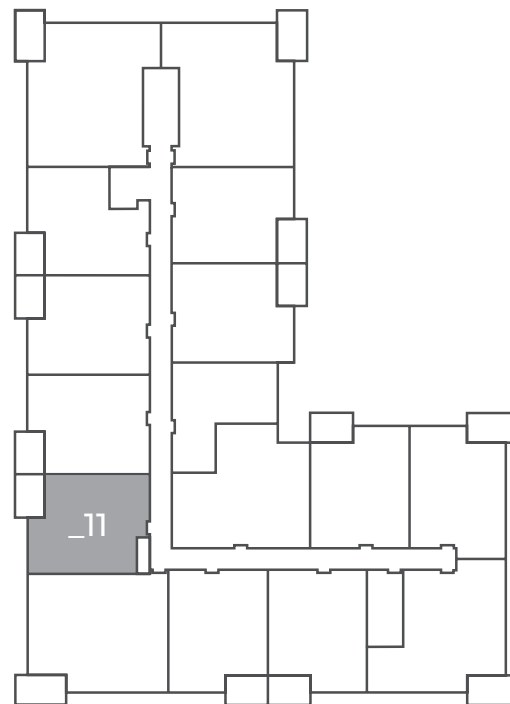
First Floor

Suite: 108



Second Floor – Fourth Floor

Suites: 211, 311, 411





MEREWOOD APARTMENTS

411 & 423 Despard Avenue
Parksville, BC

HAWTHORN

524 sq ft

The floor plan illustrated here
includes these finishes:

CABINETRY:
FLAT SLAB

COUNTERS:
QUARTZ

FLOORING:
LUXURY
VINYL TILE

CARPET:
TEXTURED
CUT PILE



All suite measurements are preliminary based on current building
concept and unit configurations and are subject to change.



MEREWOOD APARTMENTS

411 & 423 Despard Avenue
Parksville, BC

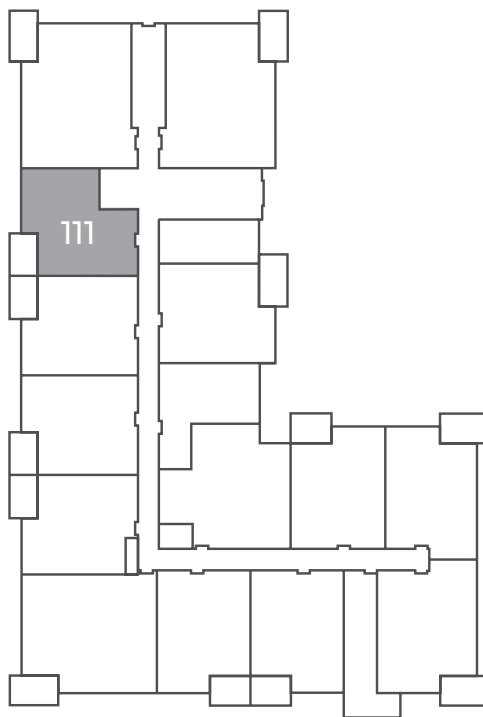
HAWTHORN

524 sq ft

423 Despard Avenue

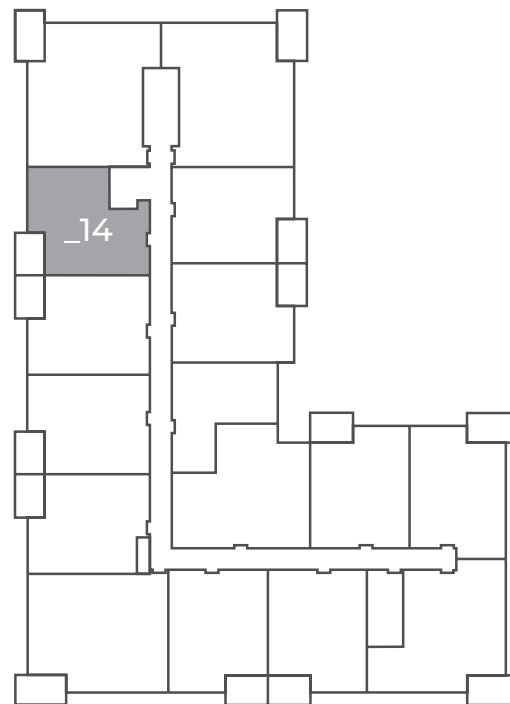
First Floor

Suite: 111



Second Floor – Fourth Floor

Suites: 214, 314, 414





MEREWOOD APARTMENTS

411 & 423 Despard Avenue
Parksville, BC

HAZELNUT

615 sq ft

The floor plan illustrated here
includes these finishes:

CABINETRY:
FLAT SLAB

COUNTERS:
QUARTZ

FLOORING:
LUXURY
VINYL TILE

CARPET:
TEXTURED
CUT PILE



All suite measurements are preliminary based on current building concept and unit configurations and are subject to change.



MEREWOOD APARTMENTS

411 & 423 Despard Avenue
Parksville, BC

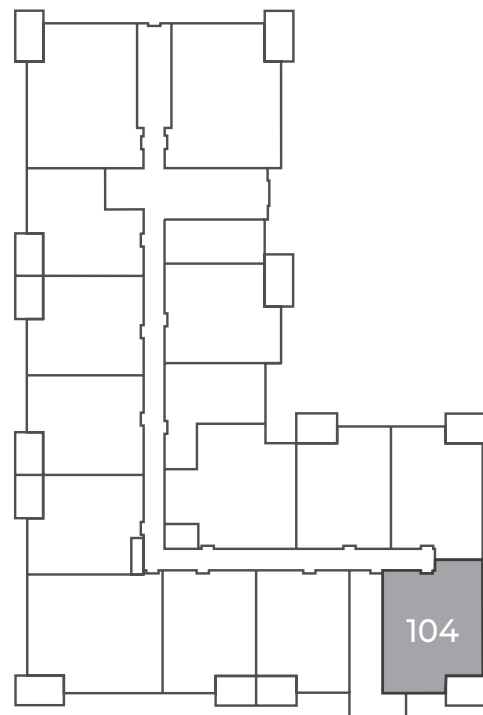
HAZELNUT

615 sq ft

423 Despard Avenue

First Floor

Suite: 104





MEREWOOD APARTMENTS

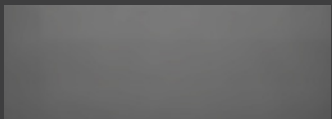
411 & 423 Despard Avenue
Parksville, BC

LARCH 572 sq ft

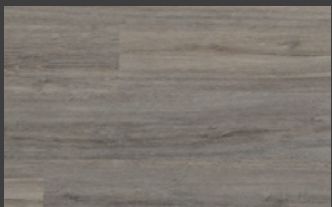
The floor plan illustrated here
includes these finishes:



CABINETRY:
FLAT SLAB



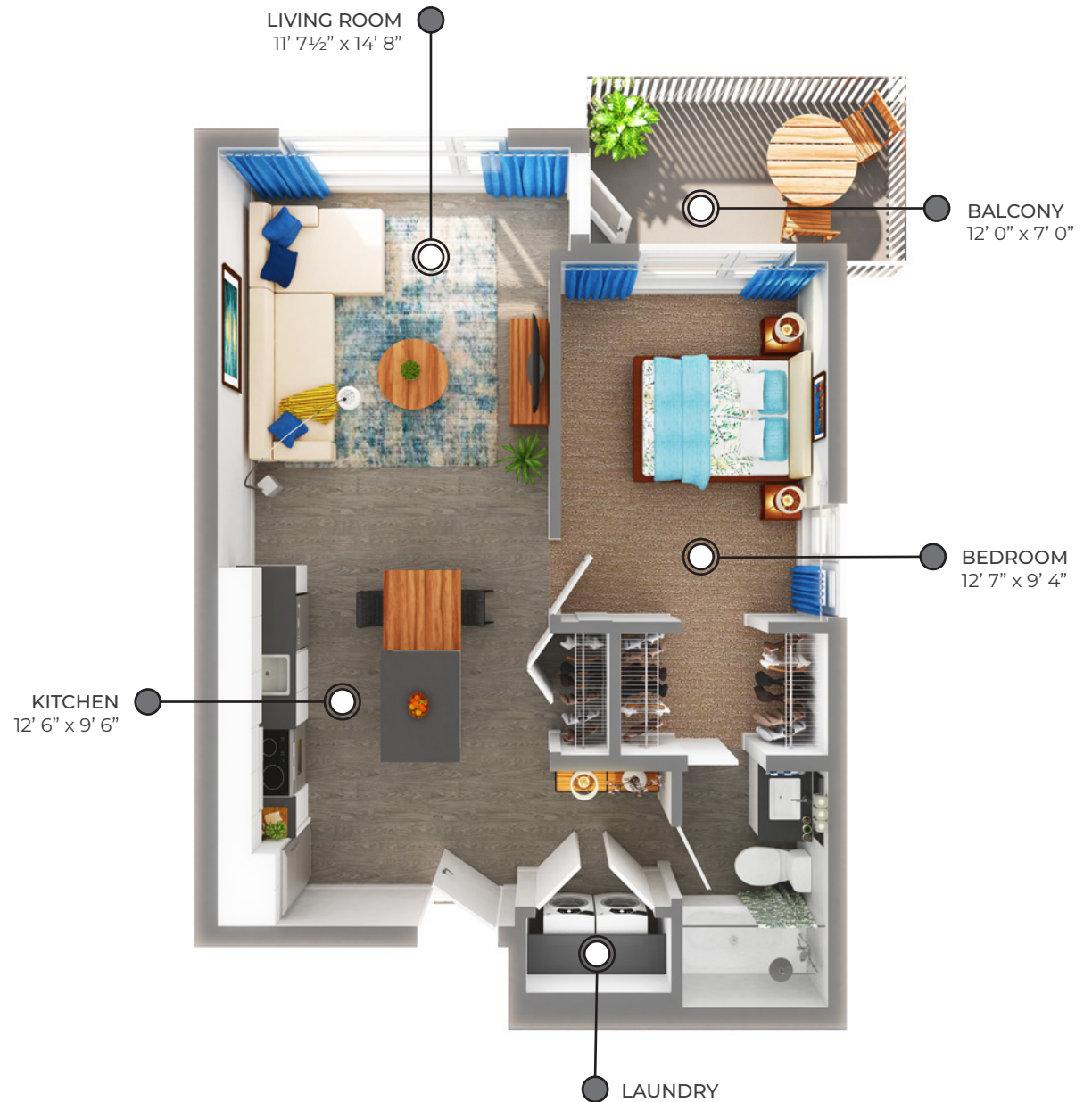
COUNTERS:
QUARTZ



FLOORING:
LUXURY
VINYL TILE



CARPET:
TEXTURED
CUT PILE



All suite measurements are preliminary based on current building concept and unit configurations and are subject to change.



MEREWOOD APARTMENTS

411 & 423 Despard Avenue
Parksville, BC

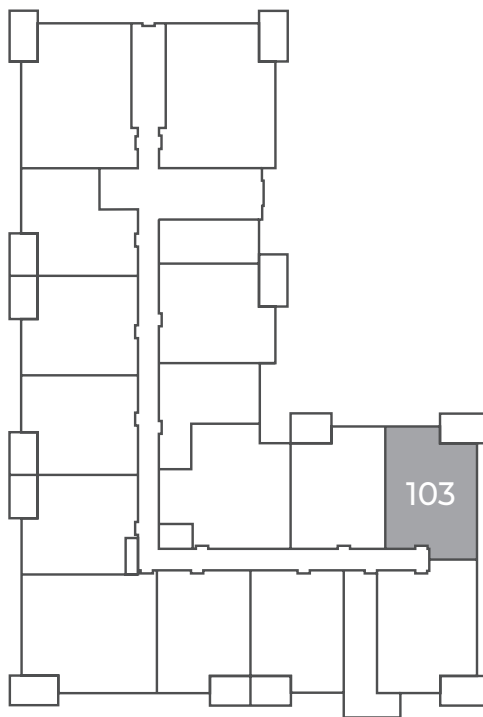
LARCH

572 sq ft

423 Despard Avenue

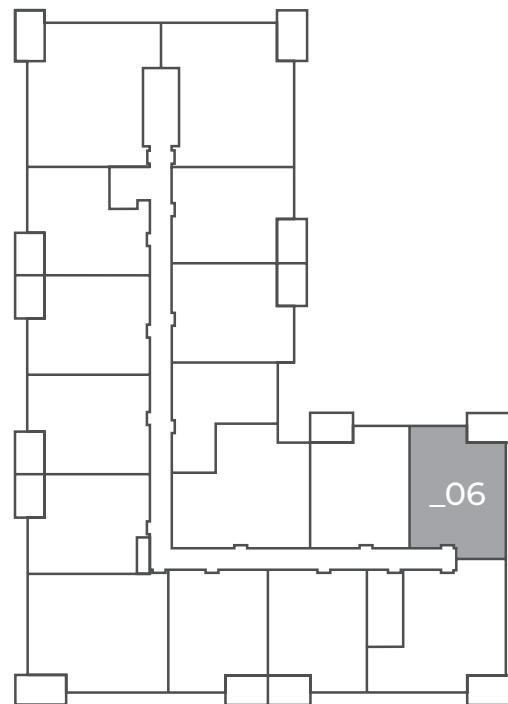
First Floor

Suite: 103



Second Floor – Fourth Floor

Suites: 206, 306, 406





MEREWOOD APARTMENTS

411 & 423 Despard Avenue
Parksville, BC

LINDEN

586 sq ft

The floor plan illustrated here
includes these finishes:

CABINETS:
FLAT SLAB

COUNTERS:
QUARTZ

FLOORING:
LUXURY
VINYL TILE

CARPET:
TEXTURED
CUT PILE



All suite measurements are preliminary based on current building concept and unit configurations and are subject to change.



MEREWOOD APARTMENTS

411 & 423 Despard Avenue
Parksville, BC

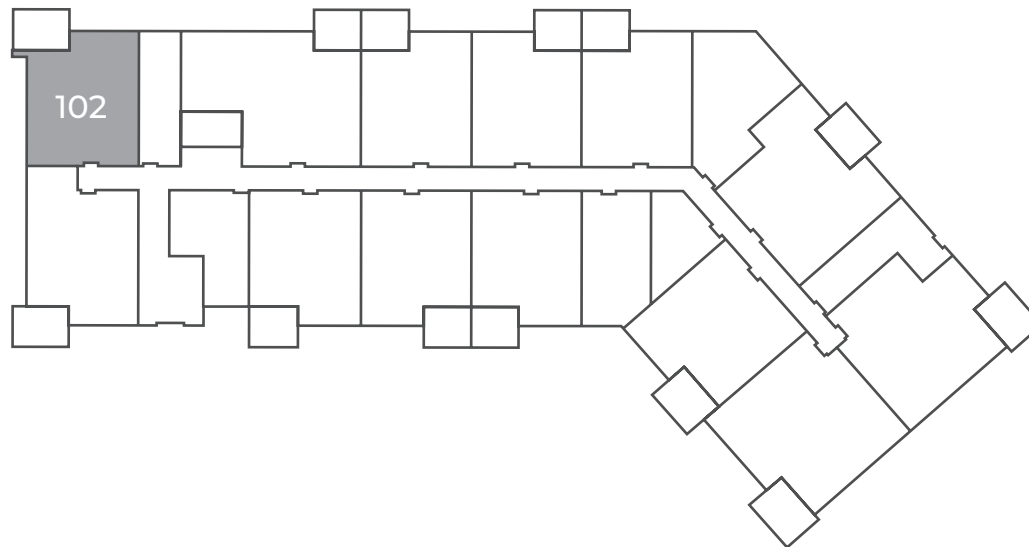
LINDEN

586 sq ft

411 Despard Avenue

First Floor

Suite: 102





MEREWOOD APARTMENTS

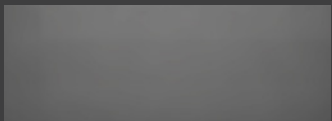
411 & 423 Despard Avenue
Parksville, BC

MAPLE 548 sq ft

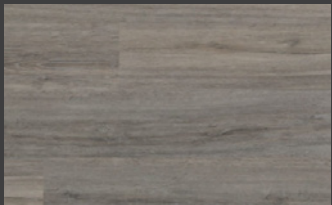
The floor plan illustrated here
includes these finishes:



CABINETRY:
FLAT SLAB



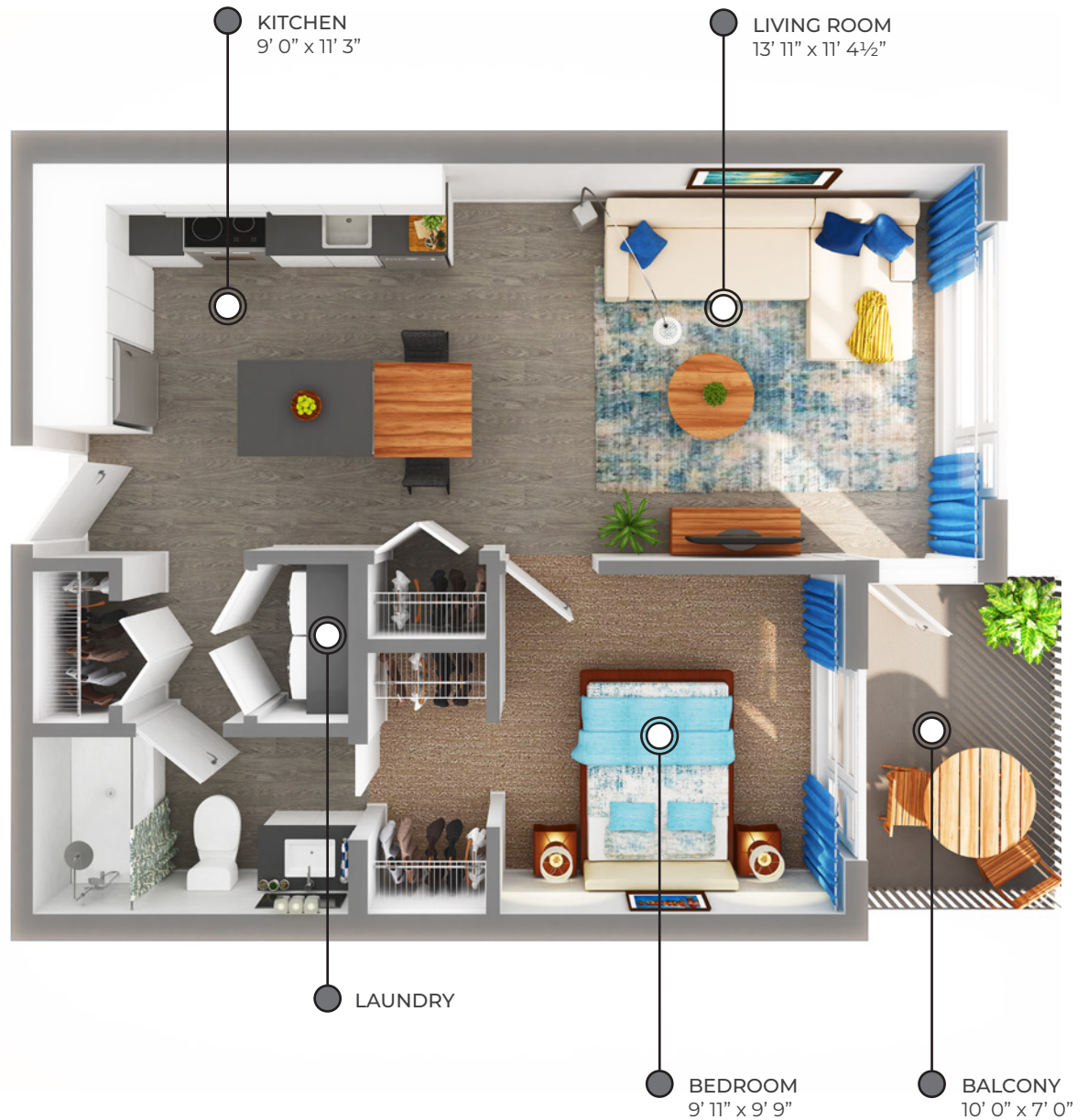
COUNTERS:
QUARTZ



FLOORING:
LUXURY
VINYL TILE



CARPET:
TEXTURED
CUT PILE



All suite measurements are preliminary based on current building
concept and unit configurations and are subject to change.

411 & 423 Despard Avenue
Parksville, BC

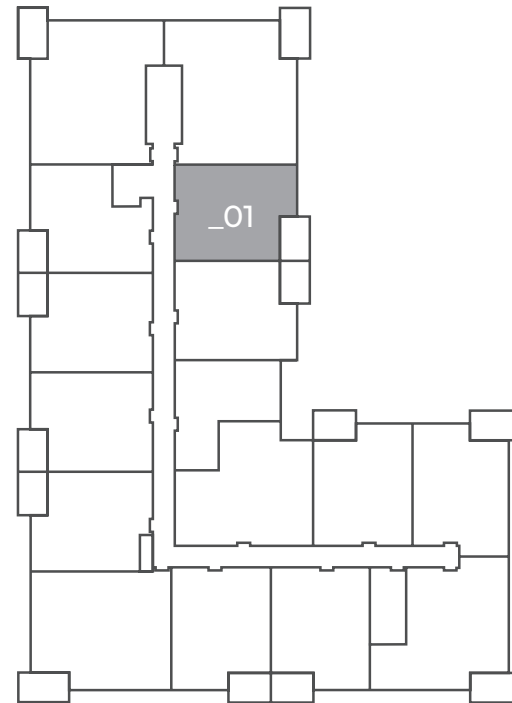
MAPLE

548 sq ft

423 Despard Avenue

Second Floor – Fourth Floor

Suites: 201, 301, 401





MEREWOOD APARTMENTS

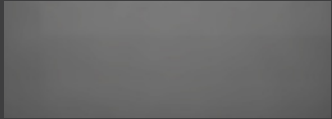
411 & 423 Despard Avenue
Parksville, BC

OAK 567 sq ft

The floor plan illustrated here
includes these finishes:



CABINETRY:
FLAT SLAB



COUNTERS:
QUARTZ



FLOORING:
LUXURY
VINYL TILE



CARPET:
TEXTURED
CUT PILE

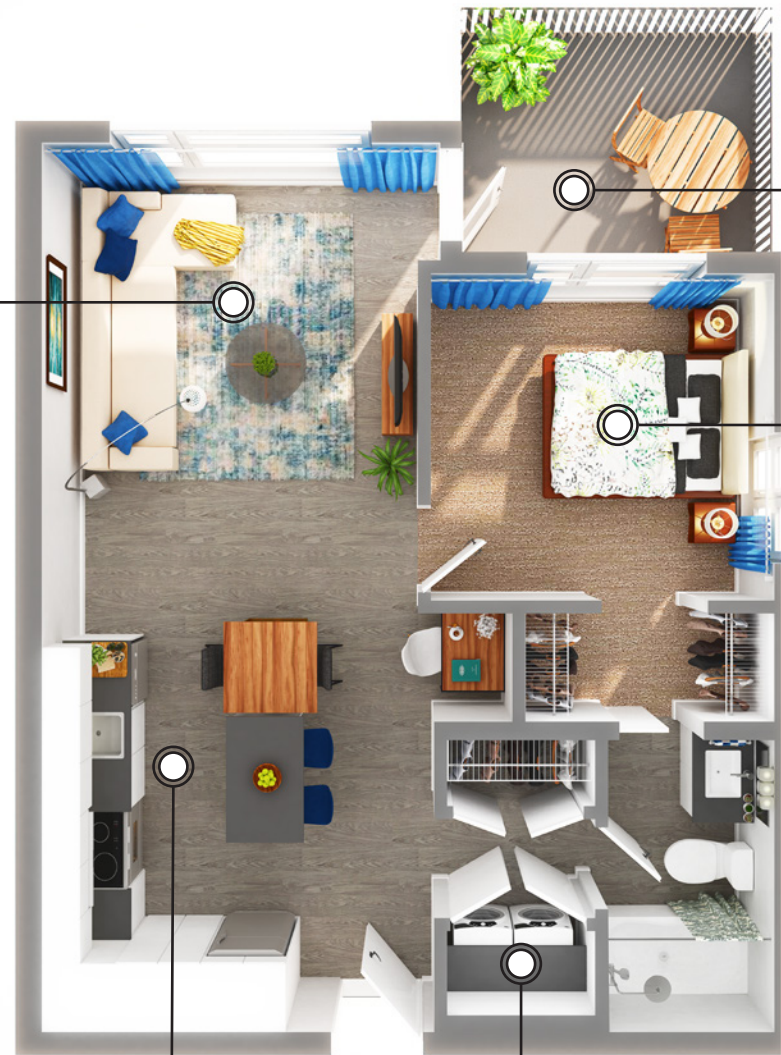
LIVING ROOM
11' 4½" x 14' 4½"

KITCHEN
10' 9" x 9' 10"

LAUNDRY

BALCONY
10' 0" x 8' 8"

BEDROOM
10' 0" x 10' 7"



All suite measurements are preliminary based on current building concept and unit configurations and are subject to change.



MEREWOOD APARTMENTS

411 & 423 Despard Avenue
Parksville, BC

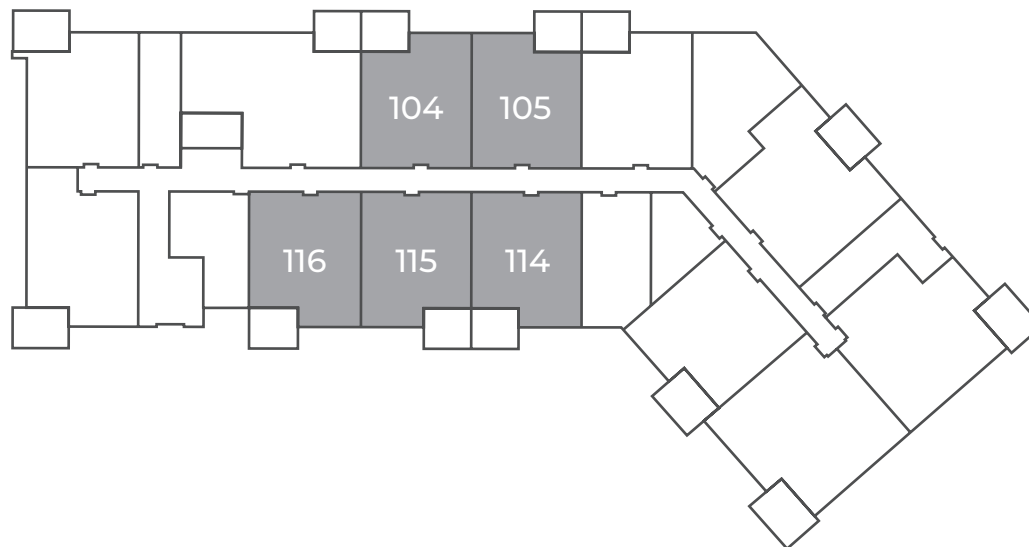
OAK

567 sq ft

411 Despard Avenue

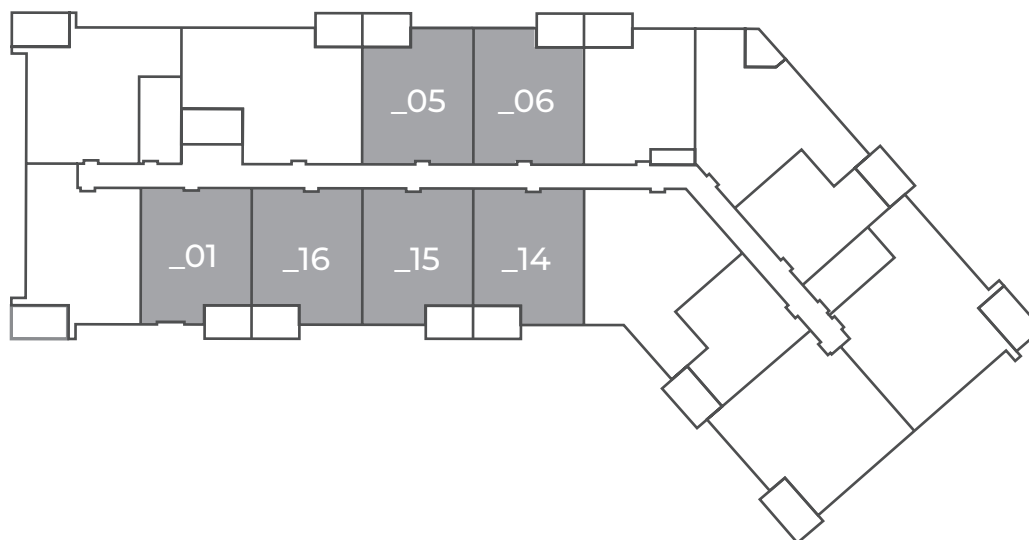
First Floor

Suites: 104, 105, 114, 115, 116



Second Floor – Fourth Floor

Suites: 201, 205, 206, 214, 215, 216, 301, 305, 306,
314, 315, 316, 401, 405, 406, 414, 415, 416





MEREWOOD APARTMENTS

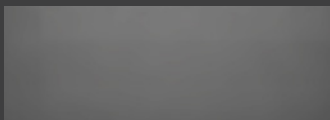
411 & 423 Despard Avenue
Parksville, BC

WILLOW 704 sq ft

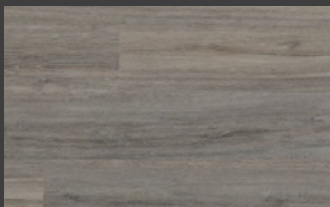
The floor plan illustrated here
includes these finishes:



CABINETRY:
FLAT SLAB



COUNTERS:
QUARTZ



FLOORING:
LUXURY
VINYL TILE



CARPET:
TEXTURED
CUT PILE



All suite measurements are preliminary based on current building concept and unit configurations and are subject to change.



MEREWOOD APARTMENTS

411 & 423 Despard Avenue
Parksville, BC

WILLOW
704 sq ft

411 Despard Avenue

Second Floor – Fourth Floor

Suites: 213, 313, 413

