



# MONARCH APARTMENTS

3554-A Ryder Hesjedal Way  
Colwood, BC

## MARINE

880 sq ft

The floor plan illustrated here  
includes these finishes:



**CABINETRY:**  
FLAT SLAB



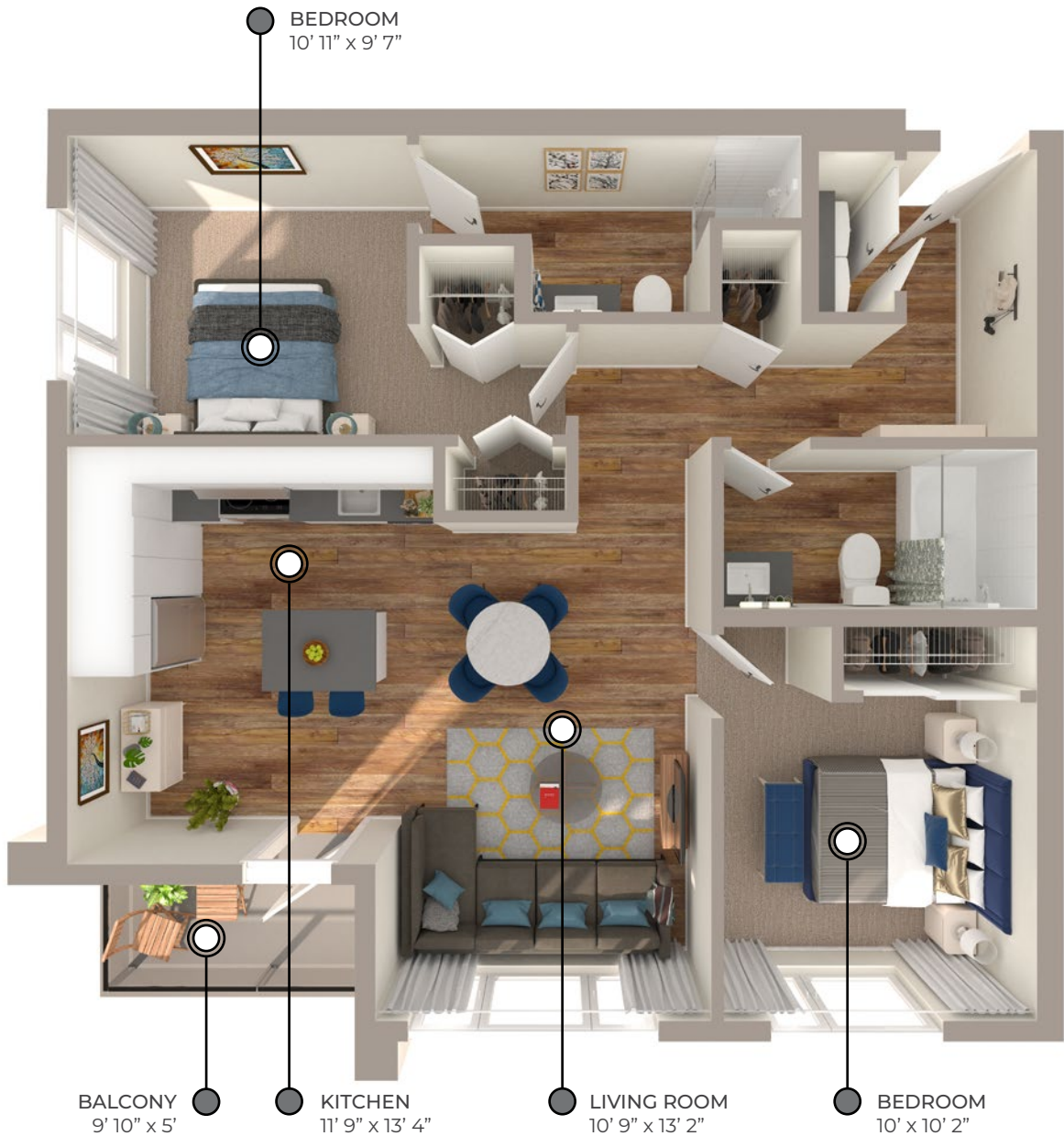
**COUNTERS:**  
QUARTZ



**FLOORING:**  
LUXURY  
VINYL PLANK



**CARPET:**  
TEXTURED  
CUT PILE



All suite measurements are preliminary based on current building  
concept and unit configurations and are subject to change.

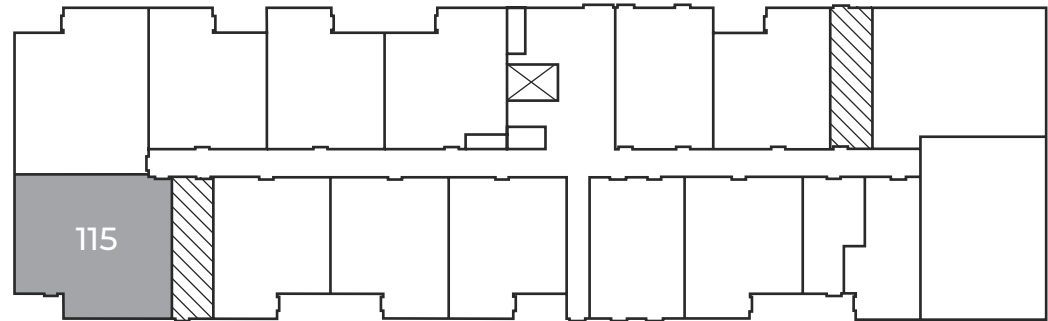
3554-A Ryder Hesjedal Way  
Colwood, BC

MARINE

**880** sq ft

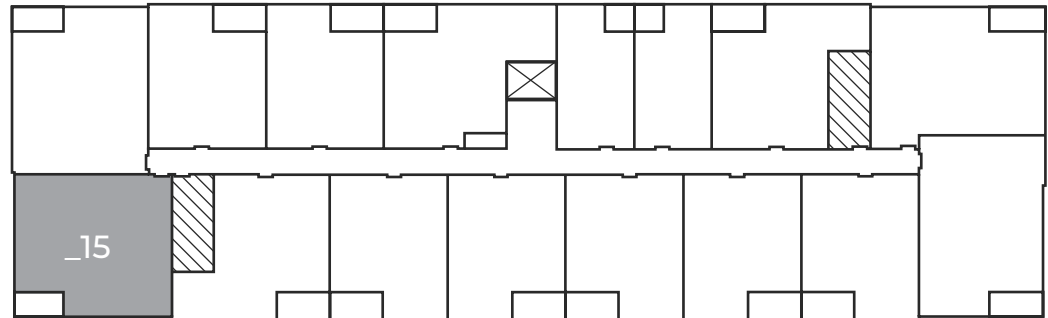
**First Floor**

Suite: 115



**Second Floor – Fifth Floor**

Suites: 215, 315, 415, 515



 Elevator  Stairwell

3554-A Ryder Hesjedal Way  
Colwood, BC

**SHORE**  
**866 - 881** sq ft

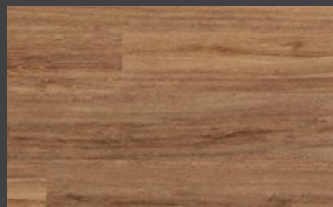
The floor plan illustrated here  
includes these finishes:



**CABINETRY:**  
FLAT SLAB



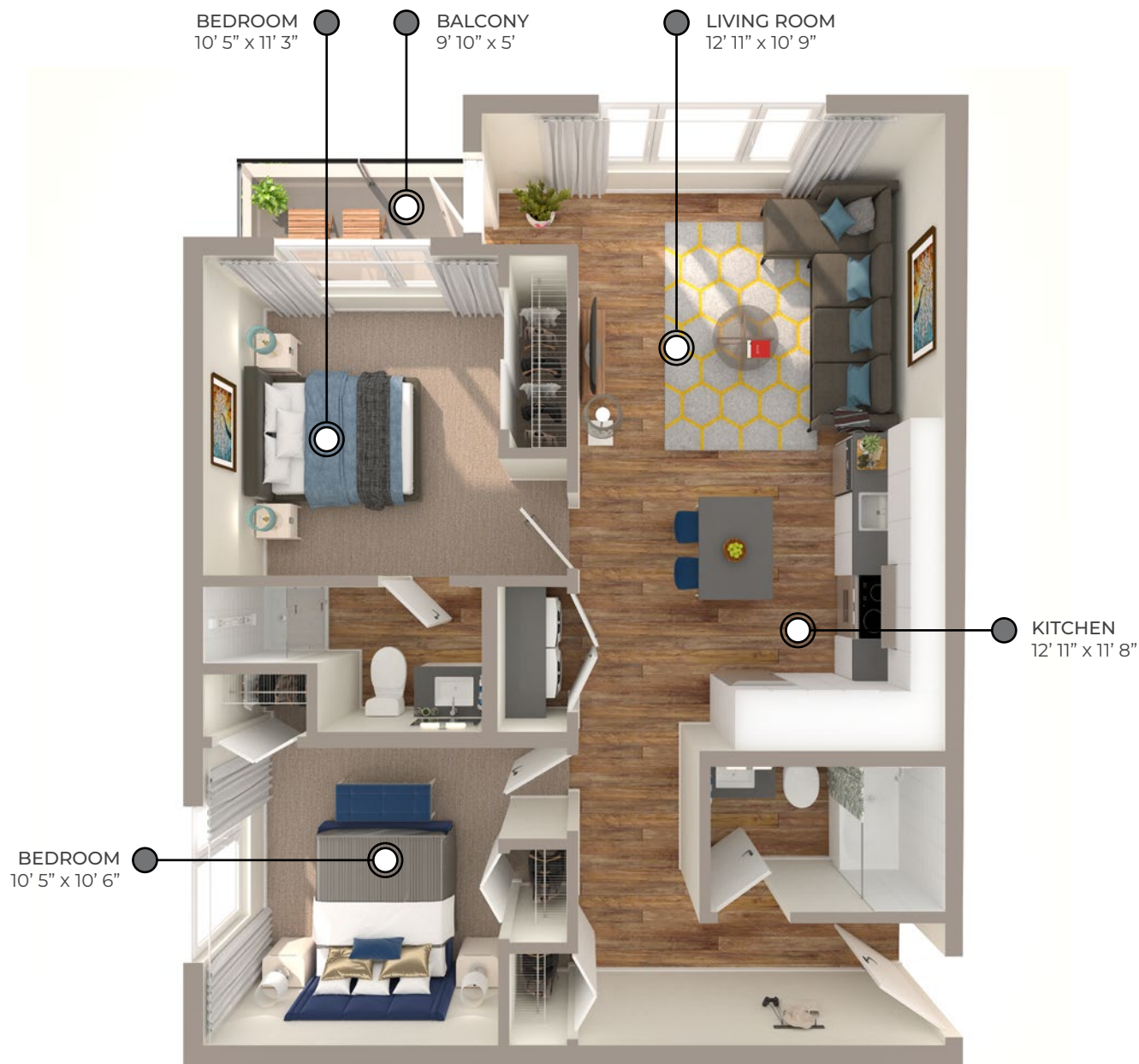
**COUNTERS:**  
QUARTZ



**FLOORING:**  
LUXURY  
VINYL PLANK



**CARPET:**  
TEXTURED  
CUT PILE



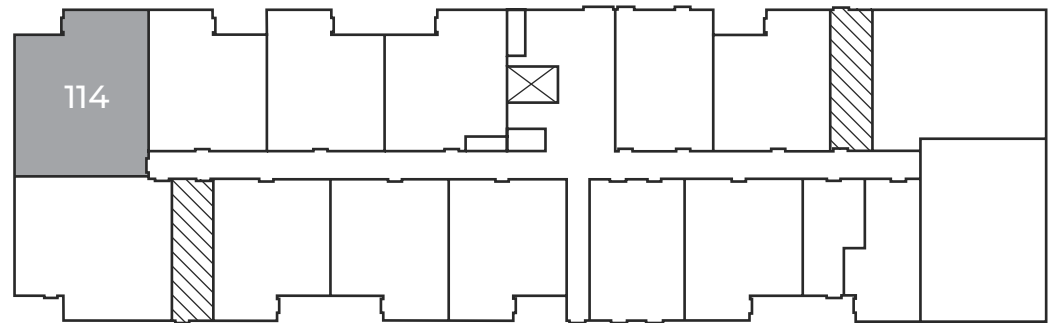
All suite measurements are preliminary based on current building  
concept and unit configurations and are subject to change.

3554-A Ryder Hesjedal Way  
Colwood, BC

**SHORE**  
**866 - 881** sq ft

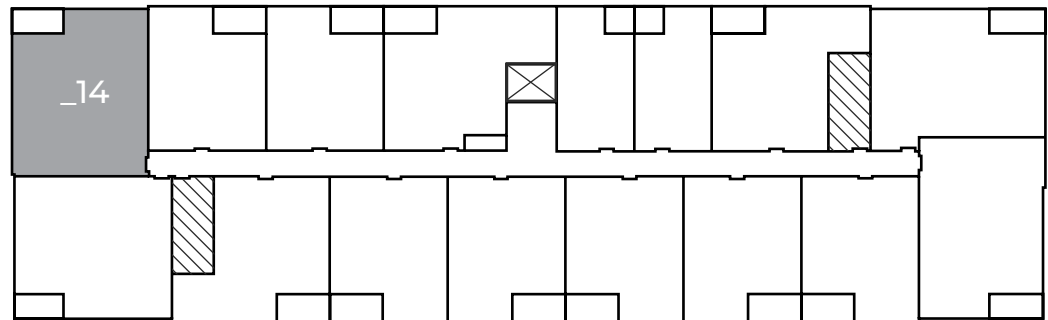
### First Floor

Suite: 114



### Second Floor – Fifth Floor

Suites: 214, 314, 414, 514



 Elevator  Stairwell





# MONARCH APARTMENTS

3554-A Ryder Hesjedal Way  
Colwood, BC

TIDAL  
850 sq ft

The floor plan illustrated here  
includes these finishes:



**CABINETRY:**  
FLAT SLAB



**COUNTERS:**  
QUARTZ



**FLOORING:**  
LUXURY  
VINYL PLANK



**CARPET:**  
TEXTURED  
CUT PILE



All suite measurements are preliminary based on current building  
concept and unit configurations and are subject to change.



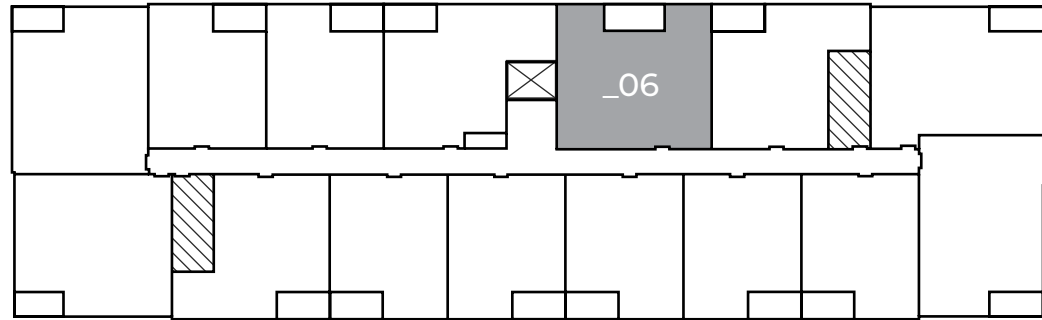
MONARCH  
APARTMENTS

3554-A Ryder Hesjedal Way  
Colwood, BC

TIDAL  
850 sq ft

#### Fourth Floor – Fifth Floor

Suites: 406, 506



 Elevator  Stairwell



# MONARCH APARTMENTS

3554-A Ryder Hesjedal Way  
Colwood, BC

## CRYSTAL 880 sq ft

The floor plan illustrated here  
includes these finishes:



**CABINETRY:**  
FLAT SLAB



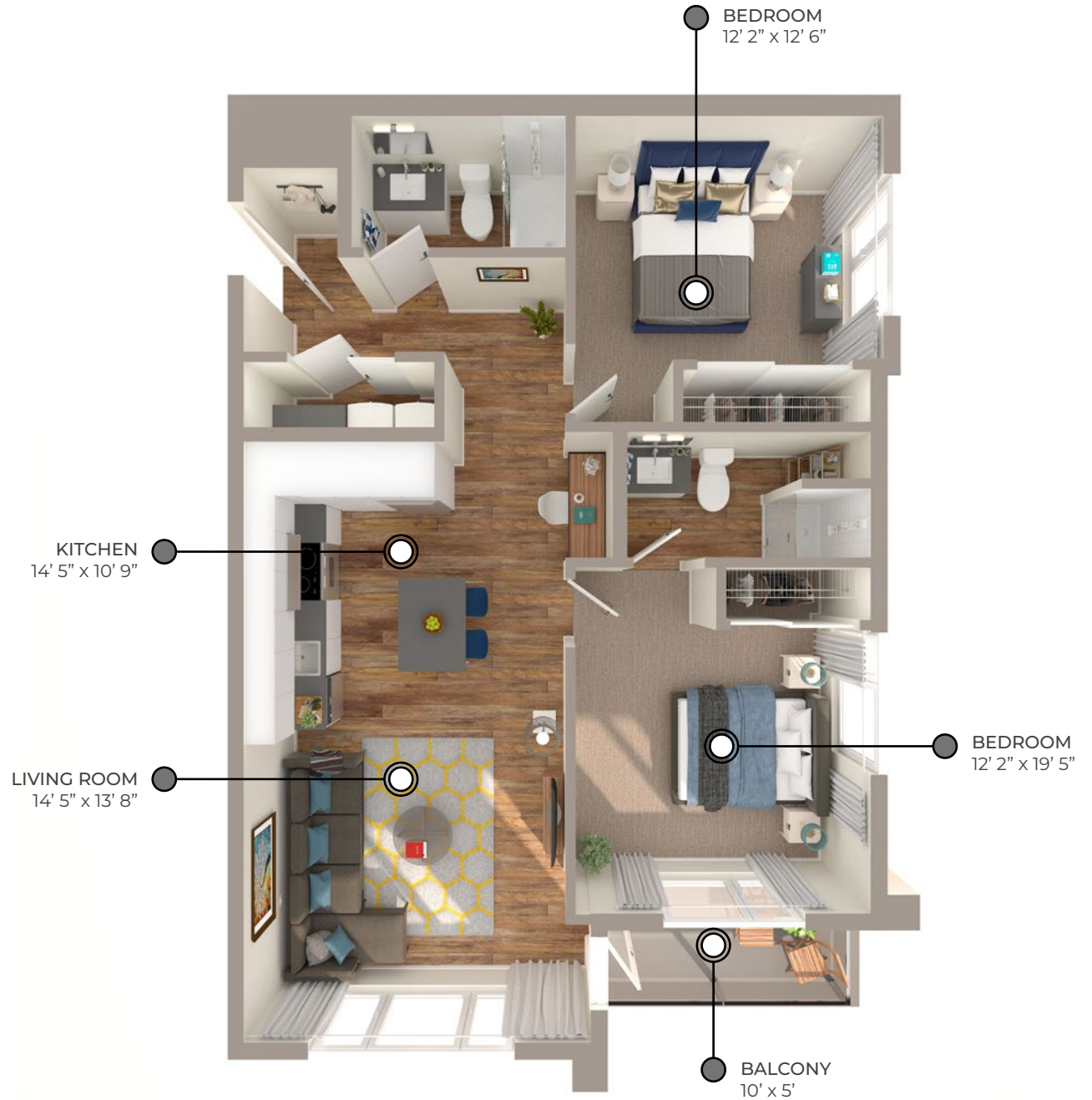
**COUNTERS:**  
QUARTZ



**FLOORING:**  
LUXURY  
VINYL PLANK



**CARPET:**  
TEXTURED  
CUT PILE



All suite measurements are preliminary based on current building  
concept and unit configurations and are subject to change.

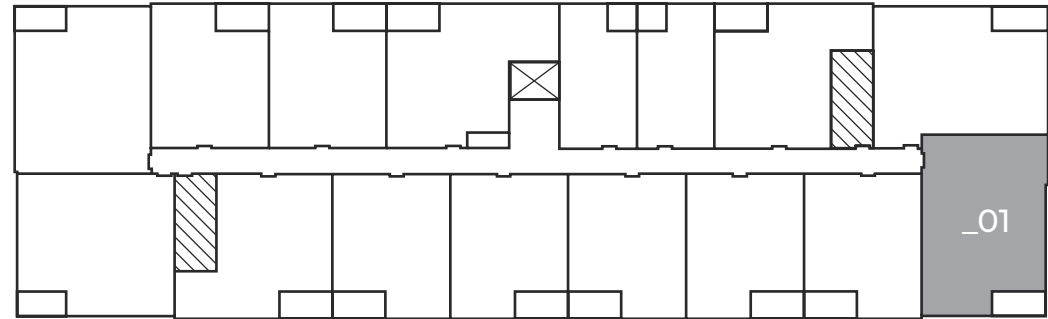
3554-A Ryder Hesjedal Way  
Colwood, BC

CRYSTAL

**880** sq ft

**Second Floor – Fifth Floor**

Suites: 201, 301, 401, 501



 Elevator  Stairwell