



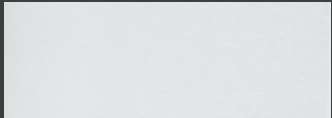
# RIVERVIEW TOWERS APARTMENTS

176 Vidal Street South  
Sarnia, ON

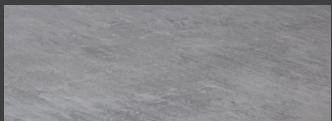
## 1 BEDROOM

632 sq ft

### FINISHES:



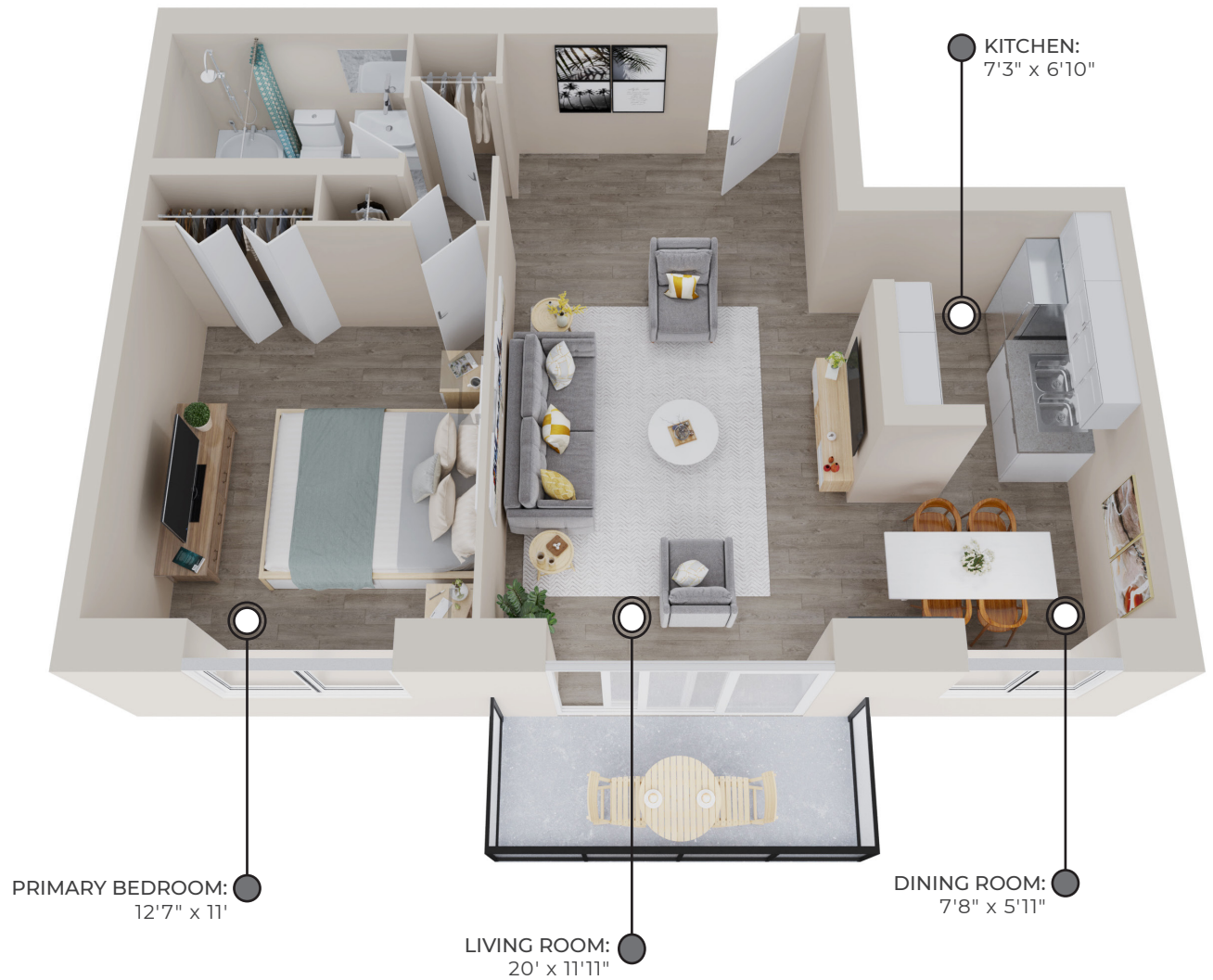
CABINETRY:  
FLAT PANEL



COUNTERS:  
QUARTZ



FLOORING:  
LUXURY  
VINYL PLANK



All suite measurements are preliminary based on current building concept and unit configurations and are subject to change.  
[skylineliving.ca](http://skylineliving.ca)



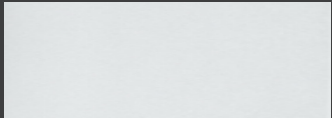
# RIVERVIEW TOWERS APARTMENTS

176 Vidal Street South  
Sarnia, ON

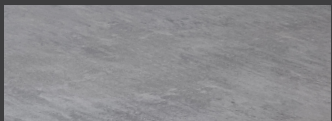
## 1 BEDROOM

**632** sq ft

### FINISHES:



**CABINETRY:**  
FLAT PANEL



**COUNTERS:**  
QUARTZ



**FLOORING:**  
LUXURY  
VINYL PLANK

### Second Floor - Eight Floor

Suites: 204, 304, 404, 504, 604, 704, 804



All suite measurements are preliminary based on current building concept and unit configurations and are subject to change.  
[skylineliving.ca](http://skylineliving.ca)



# RIVERVIEW TOWERS

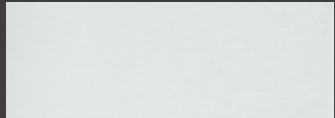
APARTMENTS

176 Vidal Street South  
Sarnia, ON

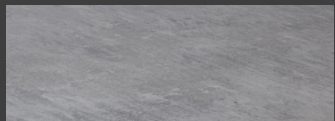
## 1 BEDROOM

**700-706** sq ft

### FINISHES:



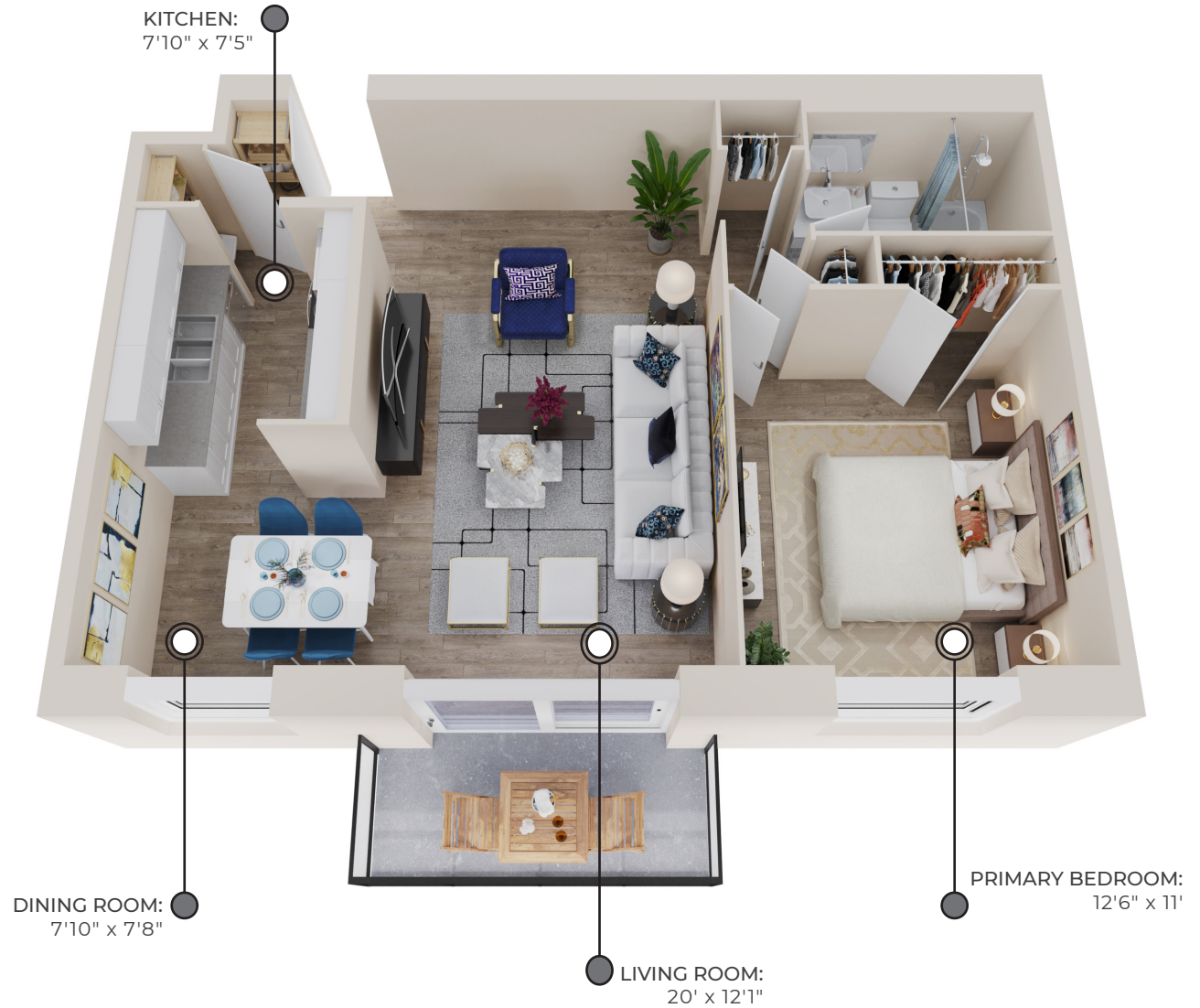
**CABINETRY:**  
FLAT PANEL



**COUNTERS:**  
QUARTZ



**FLOORING:**  
LUXURY  
VINYL PLANK



All suite measurements are preliminary based on current building concept and unit configurations and are subject to change.  
[skylineliving.ca](http://skylineliving.ca)



# RIVERVIEW TOWERS

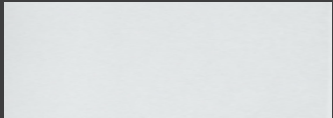
APARTMENTS

176 Vidal Street South  
Sarnia, ON

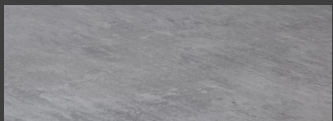
## 1 BEDROOM

**700-706** sq ft

### FINISHES:



**CABINETRY:**  
FLAT PANEL



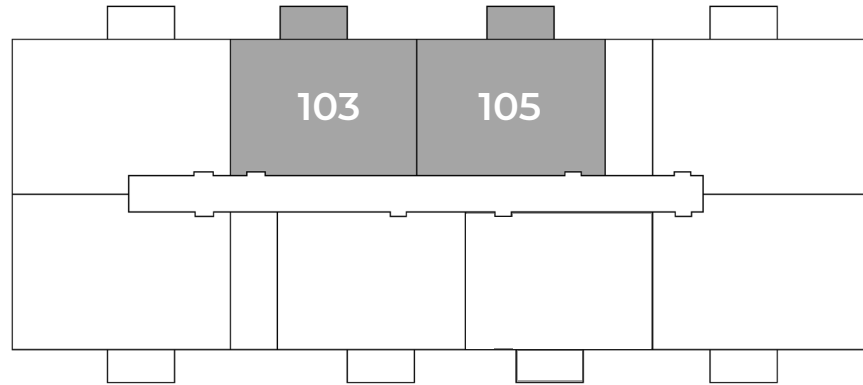
**COUNTERS:**  
QUARTZ



**FLOORING:**  
LUXURY  
VINYL PLANK

### First Floor

Suites: 103, 105



### Second Floor - Eight Floor

Suites: 203, 205, 206, 303, 305, 306, 403, 405, 406, 503, 505, 506, 603, 605, 606, 703, 705, 706, 803, 805, 806



All suite measurements are preliminary based on current building concept and unit configurations and are subject to change.  
[skylineliving.ca](http://skylineliving.ca)