



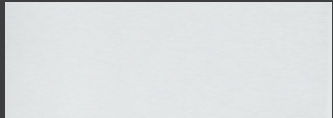
RIVERVIEW TOWERS APARTMENTS

176 Vidal Street South
Sarnia, ON

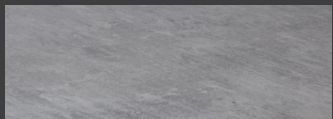
2 BEDROOM

886-921 sq ft

FINISHES:



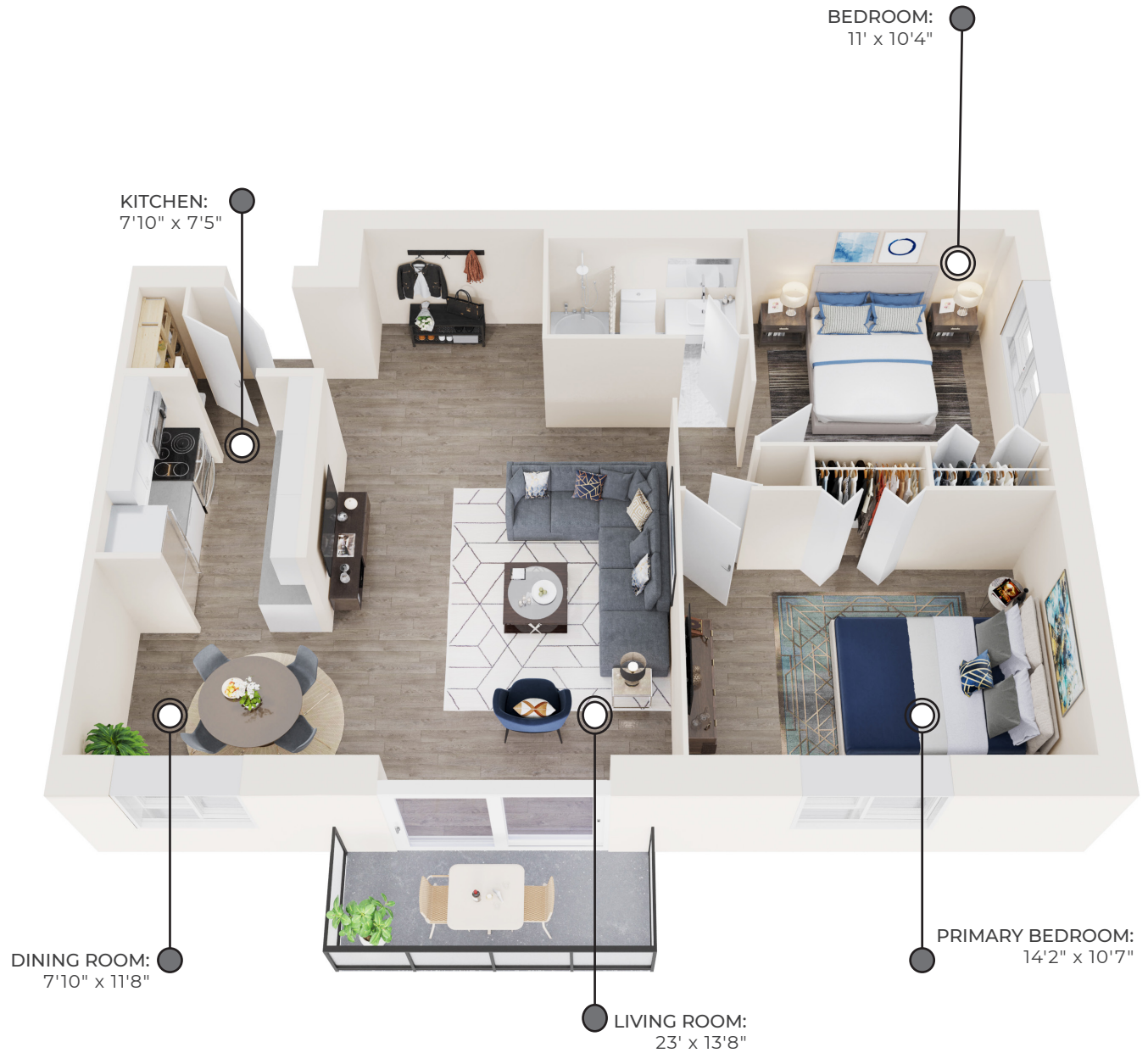
CABINETRY:
FLAT PANEL



COUNTERS:
QUARTZ



FLOORING:
LUXURY
VINYL PLANK



All suite measurements are preliminary based on current building concept and unit configurations and are subject to change.
skylineliving.ca



RIVERVIEW TOWERS

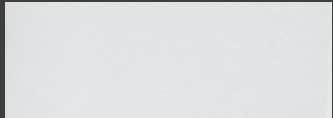
APARTMENTS

176 Vidal Street South
Sarnia, ON

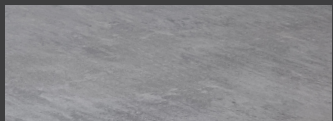
2 BEDROOM

886-921 sq ft

FINISHES:



CABINETY:
FLAT PANEL



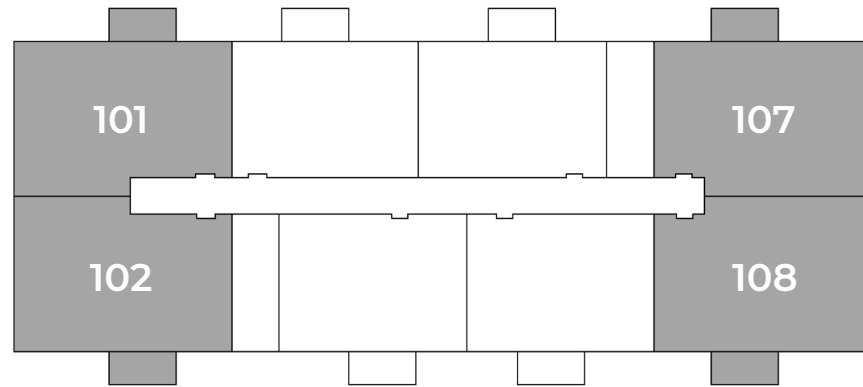
COUNTERS:
QUARTZ



FLOORING:
LUXURY
VINYL PLANK

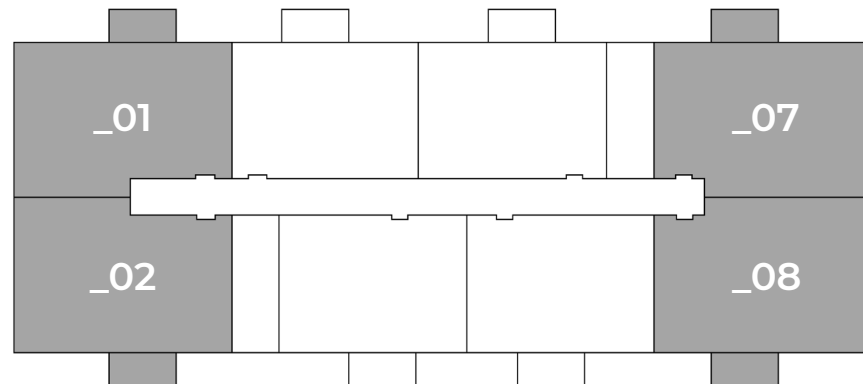
First Floor

Suites: 101, 102, 107, 108



Second Floor - Eight Floor

Suites: 201, 202, 207, 208, 301, 302, 307, 308, 401, 402, 407, 408, 501, 502, 507, 508, 601, 602, 607, 608, 701, 702, 707, 708, 801, 802, 807, 808



All suite measurements are preliminary based on current building concept and unit configurations and are subject to change.
skylineliving.ca