

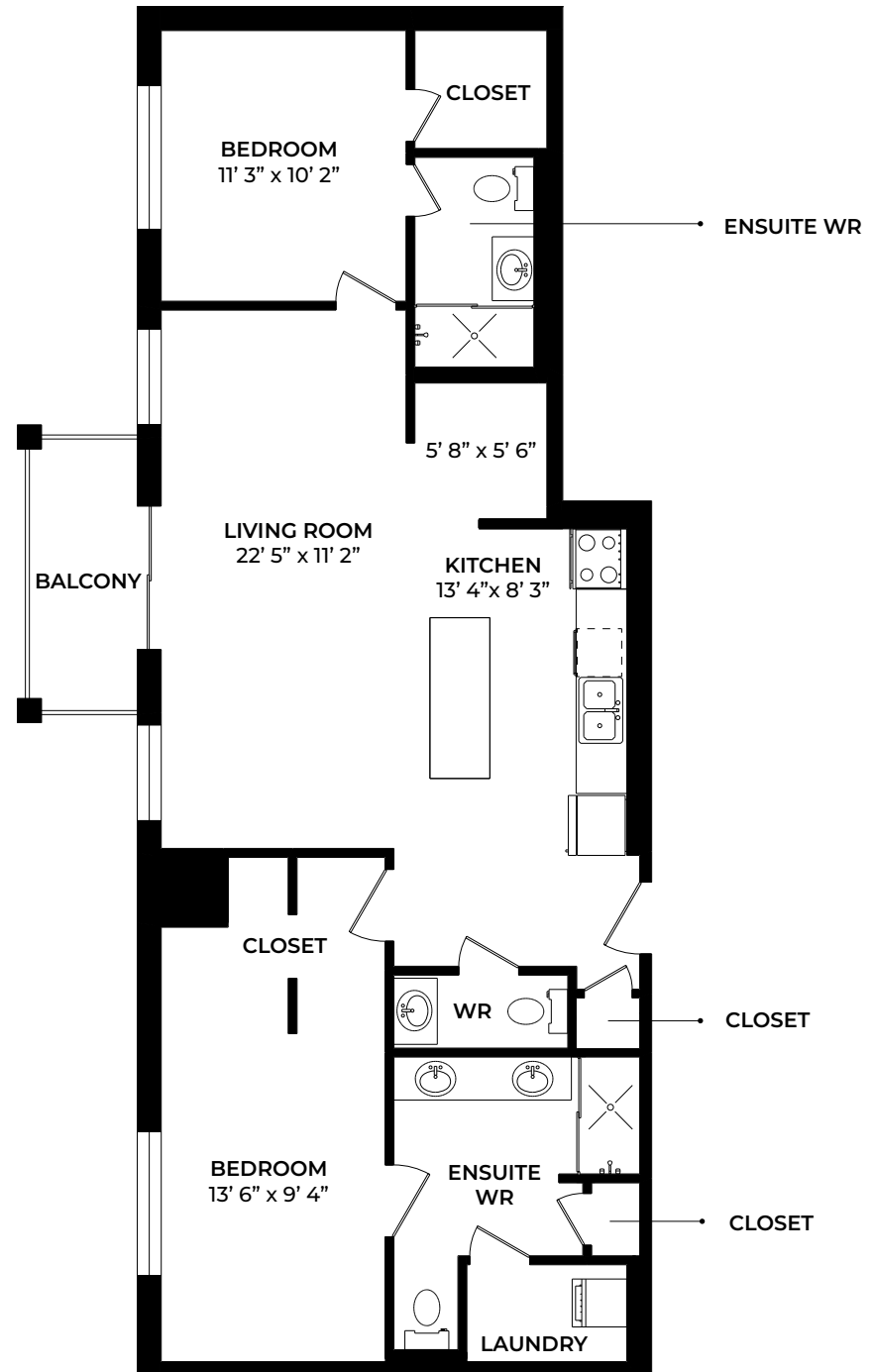


THE GREENS
OF SALLY CREEK
APARTMENTS

325 Lakeview Drive,
Woodstock, ON, N4T 0K5

2 BEDROOM BASEMENT

1134 sq ft



Please note, all floor plans and photos are provided for illustrative purposes only. **ALL MEASUREMENTS ARE APPROXIMATE.** Actual layouts may be different than shown and could vary in size and scale.



THE GREENS
OF SALLY CREEK
APARTMENTS

325 Lakeview Drive,
Woodstock, ON, N4T 0K5

2 BEDROOM
BASEMENT

1134 sq ft

